

Standen



POWER HARROW (HEAVY DUTY)

Standen Engineering Limited.
Hereward Works,
Station Road, Ely,
Cambridgeshire.
CB7 4BP
England.

Telephone: 01353 661111

Fax: 01353 662370

WARRANTY

Should defective material and/or workmanship used in manufacture give rise to failure, the products themselves or the components and sub-assemblies affected, will be replaced or repaired free of charge during the warranty period. The fitting of non STANDEN parts, or repairs, or modifications carried out by unauthorised persons may invalidate the warranty. No major work is to be undertaken without prior consultation with STANDEN Engineering Co. Ltd.

Save to the extent covered by the warranty, the Company shall not be liable in any circumstances for any loss, injury or expense, whether direct or indirect, which may arise for any reason whatsoever from any defect in or otherwise in connection with any goods supplied or work done by the company.

REPLACEMENT PARTS

Use only genuine STANDEN spares as these replacement parts are designed for your machine to give the best possible performance and also have the full backing of the warranty. See the parts section for the required part number and description when ordering spares.

Definition of Front, Rear, Left Hand and Right Hand

Throughout this handbook the terms 'Front', 'Rear', 'Left Hand' (LH) and 'Right Hand' (RH) are derived from the tractor drivers position facing forward in the normal forward direction of travel of the machine.

Left Hand Side. The side which is on the left only when an observer is facing in the normal forward direction of travel of the machine i.e. the operator looking forward from the rear of the machine.

Right Hand Side. The side which is on the right only when an observer is facing in the normal forward direction of travel of the machine.

IMPORTANT

This operators handbook should be regarded as part of the machine. Suppliers of both new and second-hand machines are advised to retain documentary evidence that this handbook was supplied along with the machine.

The dealer/distributor should read through the operating and safety instructions with the customer and ensure that they are fully conversant with these instructions prior to handing over the machine.

On delivery of the machine, the dealer/distributor should complete the warranty registration document and have it countersigned by the customer. The document is proof that the correct procedures have been followed.

The warranty registration document is invalid unless returned to **STANDEN ENGINEERING LIMITED** or the importer within fourteen days of delivery to the customer.

On taking delivery of your **STANDEN** machine check that it is as ordered and that it has not been damaged in transit. Please report any shortfall to your dealer.

The contents of this handbook, although correct at the time of publication, may be subject to alteration by the manufacturer without prior notice.

STANDEN ENGINEERING LTD. operate a policy of continual product development. Therefore, some illustrations and/or text within this publication may differ from your machine.

COPYRIGHT

Standen Engineering Limited
Hereward Works, Station Road,
Ely, Cambridgeshire. CB7 4BP
England

This handbook is issued on the condition that it must not be used, copied or exhibited without their written permission.

INTRODUCTION

INTRODUCTION TO THE MANUAL

The provision of this manual is a requirement of the Supply of Machinery (Safety) Regulations 1992.

This manual has been written and provided to enable users of the
STANDEN Products to:

- Understand how the machine operates.
- Be able to operate the machine safely and without hazard to either the operator or persons in the vicinity.
- Be able to use the machine to its full potential.

The operator must read all of the manual and fully understand its contents before attempting to operate, adjust or service the machine.

The contents of this manual are intended as a guide to the operation and servicing of the machine. It is not a training manual.



This symbol indicates important safety messages within this handbook. When you see this symbol be alert to the possibility of injury to yourself or to others and carefully read the message that follows.

Whilst all care and attention has been taken in the design and production of all STANDEN products, as with all machinery there remains a certain amount of risk to personnel whilst the machine is in use.

It is strongly recommended that operators take all possible precautions to ensure both their own safety and that of others that may be in the vicinity.

In accordance with the Supply of Machinery (Safety) Regulations 1992, note: *The equivalent continuous A-weighted sound pressure level at the drivers seat does not exceed 70 dB(A).*

SAFETY PRECAUTIONS

The STANDEN Power Harrow has been designed and constructed to comply with current Safety Regulations. However, as with all machinery there will be inherent dangers whilst operating and carrying out maintenance on the machine. The following list of items should, therefore, be brought to the attention of all persons operating or working on the machine and should be complied with at all times.

OPERATION



- Ensure operators have read and are familiar with the instructions contained in this publication.
- Consult the tractor manufacturer's manual for instructions on mounting implements and safe working methods.
- Make certain that all guards, covers, warning labels and safety devices are correctly fitted and operative.
- Ensure the work area is clear of bystanders, warning should be given before operating machine or attachments.
- Inspect the work area for obstructions which may constitute a hazard.
- Disengage all clutches and shift into neutral prior to starting the tractor engine.

- Wear substantial footwear.
- Avoid loose clothing which may be caught in moving parts.
- Wear gloves when handling worn implements or parts with sharp edges.
- Ensure the Power Harrow is not operated by children or untrained persons.
- Use the Power Harrow only for the purpose for which it was designed, tested and in accordance with the instructions contained in this publication.
- Interpret left or right as the left or right hand of the operation when sitting on the tractor seat and facing forward.
- Observe all safe driving procedures such as reducing speed on slopes and sharp turns. Be aware of weight and overall width and length of machine and attachments at all times.
- Be alert for hidden obstructions, should an obstruction be struck, stop and check for damage to the Power Harrow before proceeding.
- Avoid working on ground where there is a risk of the tractor overturning.
- Do not cultivate across the face of slopes.
- Avoid disengaging the tractor transmission before raising the Power Harrow from the ground.
- Keep yourself clear of any moving parts of the Power Harrow or parts which may be hot from operation.
- Never check oil levels when the Power Harrow is running.

- Never carry out adjustments and repairs to a mounted Power Harrow until the tractor engine is switched off and the Power Harrow is firmly supported or lowered to the ground.
- Make sure the Power Harrow is lowered, PTO drive is disengaged, the gear shift is in neutral, the brake is applied, the engine stopped and the ignition key is removed before you leave the tractor seat.

TRANSPORT



- Ensure operator and bystanders are at a safe distance from machine and do not encroach whilst raising/lowering machine or attachments to/from transport position.
- Beware of trap points when raising/lowering and fitting/removing locking devices to machine or attachments.
- Ensure all mounting and locking devices are correctly fitted and free from fatigue on machine and attachments before transport.
- When replacing locking or mounting devices use only the **correct genuine STANDEN parts**.
- Disengage PTO drive when transporting.
- Ensure machine and attachments are stable and tractor has sufficient front weights to facilitate safe driving conditions.
- Only transport machine at a speed suitable for conditions. Beware of the weight and overall width and height of machines and attachments at all times.
- Always avoid steep slopes and unduly rutted surfaces which may destabilise both tractor and machine causing hazards for other road users.

- Always comply with all current national and local road regulations at all times.

MAINTENANCE



- Stand Power Harrow on level ground and leave in a stable condition when disconnecting, use stands where provided.
- Inspect the Power Harrow for damage. Replace damaged or worn parts.
- Check that all bolts, nuts and fasteners are tight.
- Carry out lubrication and maintenance as detailed in this publication.
- Remove PTO shaft and clutch when leaving free standing to protect from effects of weather.



Always take immediate remedial action if an oil leak occurs. Never place a hand near the leak, oil under pressure can penetrate the skin and enter the blood stream. Wear barrier cream on hands if possible. Always thoroughly wash all parts of the body exposed to oil as soon as possible and use an appropriate hand cream. Dispose of rags and old oil in an approved manner.



Safety is the responsibility of the persons working with the machine. Think "SAFETY" at all times. Read and remember the contents of this handbook

DESCRIPTION

The STANDEN Power Harrow has been designed to a very high specification to cope with the arduous conditions encountered on heavy British land.

The gear train rotor drive system has an exceptionally high design capability and runs in a semi-fluid grease in a heavy steel hull assembly. Bearings fixed top and bottom of the hull give maximum rigidity to the rotors. All top bearings are greaseable.

Various cultivation techniques and a variety of tasks can be handled by the Power Harrow. It is however, particularly suitable for creating seedbeds in one pass on ploughed land and ideal for producing deep seedbeds with moisture retained in the lower soil layers, quickly and economically.

By varying the speed of rotation of the soil working blades, the cultivation depth and the forward travel speed of the tractor the Power Harrow will produce a range of tilths in most soil types.

The 'speedset' gearbox is available with a choice of four speeds as standard and further gears as an option.

Standard equipment on all models includes Crumbler roller, Floating rear levelling bar and fixed bottom link points.

Optional equipment includes Packer Rollers, Optional Blade speeds, Transport kit, Wheel Track Eradicators, Drill 'A' Frames, Rear PTO kit and a rear Hydraulic Linkage (Heavy Duty Only). A folding 6m Drill kit for toolbars is available for 6m Power Harrows.

SPECIFICATION : HEAVY DUTY POWER HARROW

To identify your STANDEN Power Harrow refer to serial number plate attached to headstock. The block marked **MOD.** Identifies machine width and model.

e.g. **300H**

300 signifies working width (3.0m)
H signifies model (Heavy Duty)

	300H	350H	400H
Max. Power at PTO HP (kW)	180	(134)	
Three Point Linkage	Optional CAT 2 or 3		
Transmission (R.P.M)	Optional 540 or 1000		
Tillage width (m)	3.0	3.5	4.0
Overall width (m)	3.2	3.7	4.2
Number of Rotors	12	14	16
Weight with Packer Roller (kg)	1635	1885	2200
Weight Crumble Roller (kg)	1520	1750	2040

Blade Speeds		Pick Off Gear	
540 R.P.M and 1000 R.P.M		L.H	R.H
304		21	18
337		20	19
373		19	20
414		18	21
Optional gear sets available.....			
231		23	15
274		22	17
459		17	22



*Refer to gearbox section for instructions for changing
Pick-off gears only run the Pick-off gears in the
combinations stated - Do not mix gear sets.*

SPECIFICATION: STANDARD POWER HARROW

To identify your STANDEN Power Harrow refer to serial number attached to headstock. The block marked **MOD** identifies machine width and model.

e.g. **300S**

300 signifies working width (3.0)
S signifies model (Standard)

	250S	300S	350S	400S
Max. Power at PTO HP (kW)		130 (97)		
Three Point Linkage		Category 2 only		
Transmission (R.P.M.)		Optional 1000 or 540		
Tillage width (m)	2.5	3.0	3.5	4.0
Overall width (m)	2.7	3.2	3.7	4.2
Number of Rotors	10	12	14	16
Weight with Packer Roller (Kg)	1300	1445	1625	1855
Weight with Crumble Roller (kg)	1230	1340	1510	1725

Speeds available with gear sets supplied:

Blade Speed		Pick-off Gear	
540 R.P.M	1000 R.P.M	L.H	R.H
236	299	19	16
265	335	18	17
297	376	17	18
333	421	16	19
Optional Gear sets available:			
187	236	21	14
210	266	20	15
374	---	15	20
421	---	14	21



*Refer to gearbox section for instructions for changing
Pick-off gears only run the Pick-off gears in the
combinations stated - Do not mix gear sets.*

SPECIFICATION: HYDRAULIC FOLDING STANDARD

To identify your STANDEN Power Harrow refer to serial number plate attached to headstock. The block marked **MOD** identifies machine width and model.

e.g. **600S**

600 signifies working width (6m)

S signifies model standard

	S600	S800
Max. Power at PTO HP (kW)	260	(195)
Three Point Linkage	Category 3 (Opt Cat 4 Lower link only)	
Transmission (R.P.M)	1000	1000
Tillage width (m)	6.0	8.0
Overall width	6.2	8.2
Folded transport width (m)	2.9	2.9
Folded transport height -		
-From Lower Hitch Point (m)	3.0	4.0
Number of Rotors	24	32
Weight with Packer Roller (kg)	3900	4500
Weight with Crumble Roller (kg)	3500	4210

Drive is supplied to the Power Harrow via a fixed **1000 R.P.M.** input 'SPLITTER' gearbox to 'SATELLITE' gearboxes on the individual units. Blade speeds are alternated by changing Pick-off gear arrangements on 'SATELLITE' gearboxes. ('SATELLITE' gearboxes are 540 R.P.M.)

Blade speeds	Pick-off gear	
1000 R.P.M	L.H	R.H
282	19	16
317	18	17
355	17	18
398	16	19



Refer to gearbox section for instructions for changing Pick-off gears only run the Pick-off gears in the combinations stated - Do not mix gear sets. Each satellite gearboxes must be run with the same gear combination.

NEW MACHINE

Lubrication and General

On receipt of a new machine check that it meets the required specification then carry out a preliminary maintenance. Ensure Power Harrow is standing on level ground and is stable prior to inspection.

- 1) Check all oil and grease points and moving parts as shown under “Lubrication and Maintenance” section.
- 2) Check all bolts, nuts and fasteners, particularly blade bolts, have been tightened as detailed in blade section.
- 3) Check through the filler cap of the gear train housing that the level of self-levelling grease comes to the middle of the gears. As shown “in” Lubrication and Maintenance section.

Power Take Off, Drive Shaft and Clutch

For delivery reasons the PTO drive shaft may have been removed from the machine. If so it should be refitted as detailed in both “clutch” and “attaching to tractor” sections.



**SERIOUS DAMAGE CAN RESULT
FROM FAILURE TO CARRY OUT
THE ABOVE PROCEDURES !**



ATTACHING TO TRACTOR

TRACTOR SUITABILITY



Consult tractor manufacturers manual and specification to ensure it is of sufficient capacity and correctly maintained to operate the Power Harrow and any attachments safely in all conditions.

Failure to do so may result in un-warranted damage to both tractor and implement, and risk injury to both operator and bystanders.

P.T.O SHAFT

With the Power Harrow standing on level ground and locking devices fitted where applicable adjust depth control pins until the gearbox input shaft is horizontal. Reverse the tractor to the Power Harrow to give 15cm (6") **Minimum** engagement of the male half shaft in the female tube when connected to the tractor. This establishes the minimum safe working length of the PTO shaft for connection to the tractor.



It is essential that the PTO drive shaft is set to a safe working length and the male shaft does not bottom or separate from the female tube under all conditions of use and transport.

TRACTOR ALIGNMENT

Position the lower link ball joints in line with the Power Harrow mounting brackets. The mounting brackets on rigid machines maybe reversed to suit CAT 2 or CAT 3 and moved forward if necessary to suit PTO shaft length. Connect the lower links with pins and lynch pins provided.

ATTACHING TO THE TRACTOR

Adjust the tractor top link as necessary to connect it to the machine with the pin provided. Both top and bottom link positions on Heavy Duty model have unequal hole sizes to take stepped pins which are either Category 2 or 3.

Attach the PTO drive shaft to the tractor, ensuring the quick release pin engages the spline shaft groove.

Attach the guard chains to the tractor and Power Harrow.

Adjust the sway blocks or check chains of the tractor so the is only 5cm (2") of movement in the linkage. Adjust the tractor linkage so the Power Harrow is both central to the tractor and level with the back axle.

For driving stability and safety ensure sufficient front weights are fitted to compensate for the mounted Power Harrow and any attachments.

Before engaging the tractor PTO check that the operating length of the drive shaft maintains the minimum 15cm (6") of male-female engagement when the machine is in the working and raised positions, and does not completely close when the shaft is horizontal.

When raised the angle of the drive shaft must never exceed 40 degrees from the horizontal or damage may occur. It may be necessary to limit the movement by means of the control quadrant.

To disconnect the Power Harrow follow the same procedure in reverse, ensuring that the machine is stable prior to disconnection.

GEARBOX



Disengage PTO drive and switch off tractor engine before attempting any of the following procedures or maintenance on the gearbox. Beware of hot oil when removing covers if the implement has been used prior to maintenance.

Ensure all fixings and seals/gaskets are in good condition to avoid 'oil seepage' during use.

Ensure all breathers are operational and not surrounded by debris which will obstruct air flow.

OIL LEVEL

Check gearbox oil level by means of the dipstick situated at the rear of the Pick-off gear compartment(Standard, Heavy Duty) As follows:-

- 1) Clear away dirt from around dipstick plug.
- 2) Unscrew dipstick and wipe away oil residue.
- 3) Insert dipstick into hole so the underside of the plug rests on top of the gearbox. The correct oil-level should be between the two marks on the dipstick.
- 4) Fill with SAE 140 gear oil as required.
- 5) Replace Dipstick and screw plug securely in position. HYD-Folding machines central splitter gearbox oil level is set by means of a level plug at the rear of the box. Remove level plug and fill with SAE 140 gear oil until oil reaches level hole, and then securely refit plug.

SPEED/GEAR CHANGE

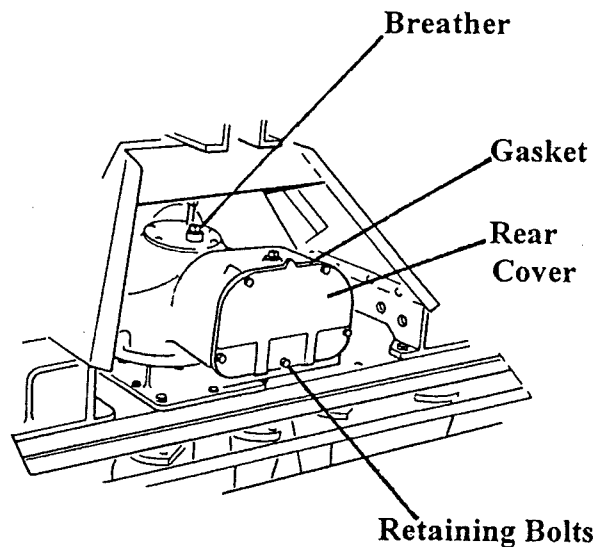
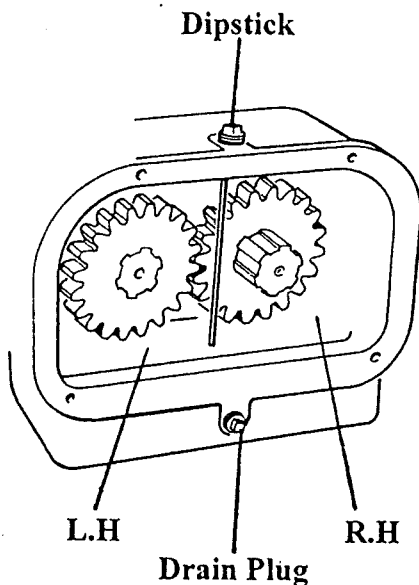
Two pairs of gears are supplied with each new machine and further pairs can be supplied as an option. Consult relevant "Specification" section for blade speeds and options. A blade speed chart is also fitted to the rear of the headstock.

540 or 1000 is clearly stamped on the front of the pinion cover to identify transmission requirements of each gearbox.

GEARBOX

TO CHANGE GEARS

- 1) Power Harrow should be raised and tilted forward to move oil from rear of box.
 - 2) Clean away any dirt from around the rear of the gearbox and undo the five bolts retaining the rear cover. Remove cover and gasket.
 - 3) Remove existing gears and replace with the required pair as detailed in "Specification" to give the required blade speed.
 - 4) Refit rear cover and gasket, securing with the five bolts.
- (The same procedure also applies when rear power take off kit is fitted).



CLUTCH



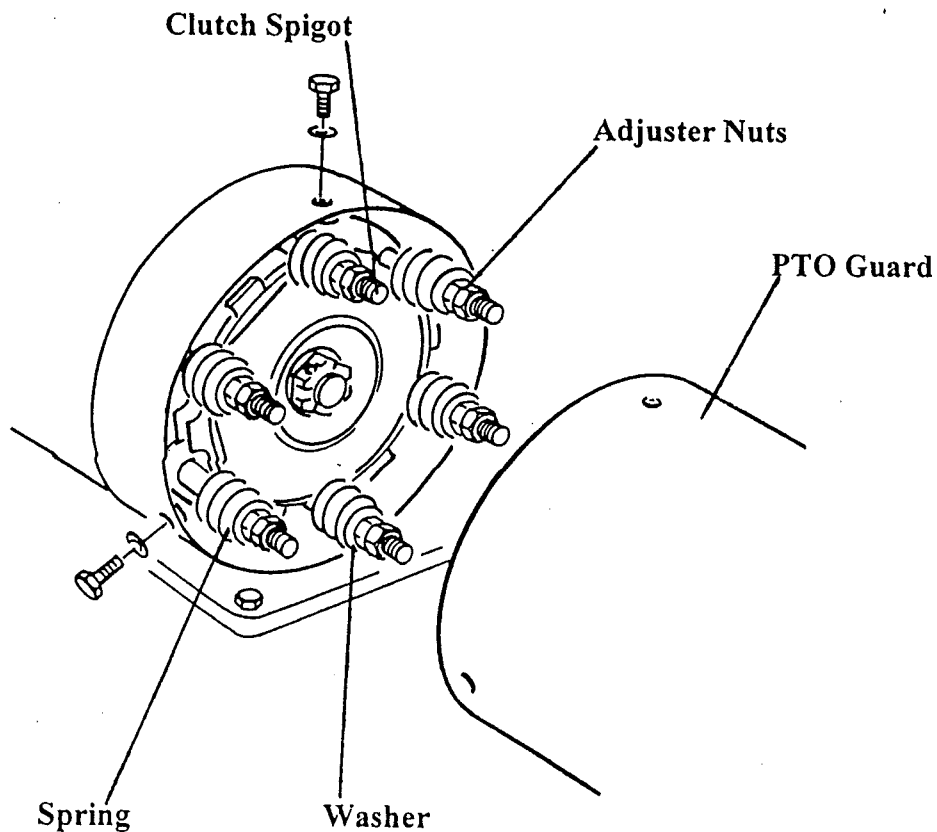
Disengage tractor PTO drive and switch off tractor engine before setting or adjusting clutch unit.

Drive from the tractor (or "Splitter" gearbox 6m and 8m) to the Power Harrow gear box is taken through a dry plate safety overload clutch. The overload clutch unit protects the Power Harrow transmission should the blades encounter an obstruction. If set too loosely the blades will turn erratically leading to excessive friction plate wear and a poor work finish. If set to tight it will not provide the necessary protection to both machine and tractor transmissions.

CLUTCH

TO SET/ADJUST CLUTCH

- 1) Disengage tractor PTO drive and switch off tractor engine.
- 2) Disconnect the PTO shaft guard and safety check chain. Remove the outer clutch guard from machine.
- 3) Remove clutch unit adjuster nuts, washers and springs.
- 4) Locate PTO drive shaft clutch plate over the spigot on the clutch unit and fit springs, washers and nuts finger tight to hold in position.
- 5) Tighten two opposite nuts in tandem until the springs are coil bound to centralise unit.
- 6) Tighten other nuts to finger tight to the washer then tighten each nut an additional:-
 - 1) $3/4$ TURNS - 1000 R.P.M. TRANSMISSION
 - 2) $1/2$ TURNS - 540 R.P.M. TRANSMISSION
- 7) Slacken off the two coil bound springs and reset as outlined in (f).
- 8) Refit PTO drive shaft guard and clutch unit guard, securely fasten safety guard chain.



BLADES

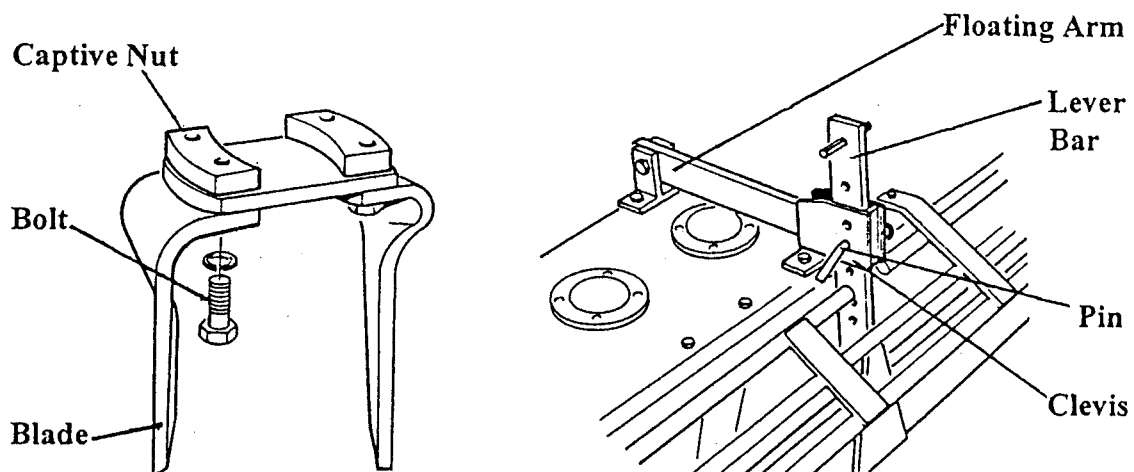


Disengage tractor PTO drive and switch off tractor engine before attempting any maintenance on blades.

STANDEN Power Harrow blades are designed to produce seed beds of exceptional quality with the moisture retained in the lower soil layers. 12" forged "L" blades are standard on all machines. The blades are held in place by dia 16mm High tensile bolts (grade 12.9) Heavy coil spring washers and a double captive harden nut.(see below left) Flanged nyloc nuts are available as an option.

Bent, broken or badly worn blades impair efficiency and should be replaced immediately.

Use only genuine STANDEN blades and fixings when re-furbishing your machine.



LEVELLING BAR



Beware of trap points and unsupported weight swing when adjusting levelling bar.

The rear mounted levelling bar is attached to two floating arms and is adjustable vertically by holes in the mounting arms. Pins and 'R' clips lock the levelling bar into the cleaves of the floating arms at the desired height.(see above right)

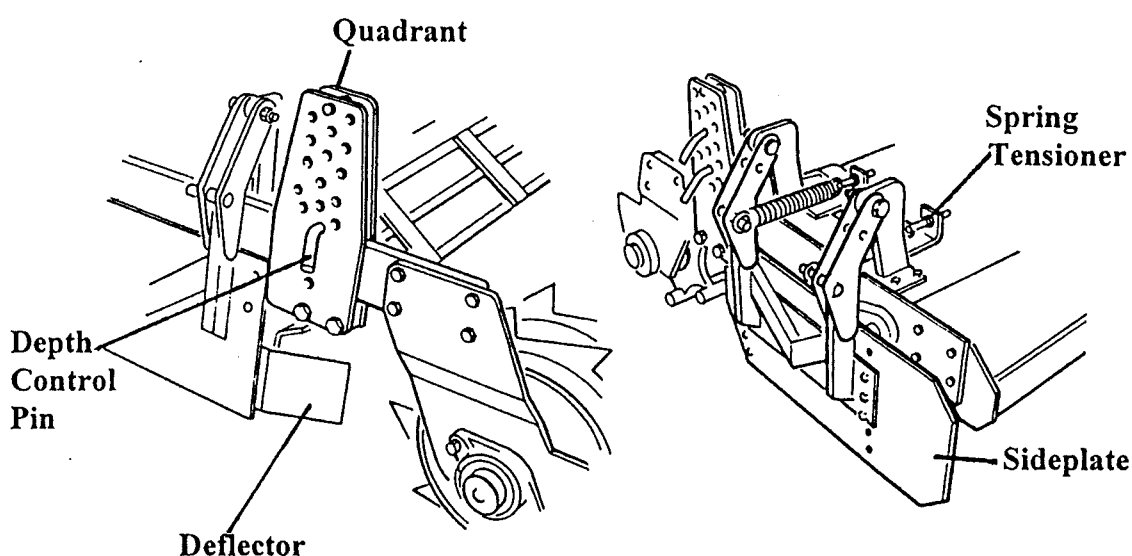
Correct setting of the levelling bar keeps an even and level seedbed whilst retaining unbroken clods in the rotors to be broken down.

DEPTH CONTROL



Do not adjust depth control while machine is work or motion. Disengage PTO drive and switch off tractor engine. Beware of trap points and machine stability when adjusting.

Tillage depth is recalculated by means of a rear mounted roller. To adjust the working depth, raise Power Harrow and select new position for depth control pin in depth adjustment quadrant. Each hole position provides a variation in working depth of approx. 2.5cm (1").(see below left)



SIDE PLATES



Before adjusting sideplates disengage tractor PTO drive, switch off engine and beware of trap points during adjustment.

The Sideplates are adjustable in height by a series of holes to suit working depth and are fixed in position by six nuts and bolts. The Sideplates are spring loaded to retain cultivated soil within the working width of the Power Harrow, But allowing large stones or debris to pass through thus protecting the end rotors.

Adjustable deflectors are positioned at the rear of the sideplate to guide cultivated soil under the Roller and prevent ridging and an uneven seedbed.(see above right)

HYDRAULIC-FOLDING STANDARD



Be aware of the overall height and width of machine when lowering or raising for/after transport, ensure bystanders do not encroach during operation and fit all locking devices before moving off. Keep all Hydraulic fittings clean and ensure all pipe fittings are securely fastened. Do not attempt raising or lowering of Power Harrow unless tractor is on level and stable ground and there is no risk of overturning.

To Raise For Transport

Ensure tractor is on level, stable ground.

Disengage tractor PTO drive, select neutral gear and apply brake.

Raise Power Harrow at least 15cm (6") off ground.

Ensure tractor engine is switched off, remove locking pin and place in stowage port provided. On machines fitted with **Hydraulic Catches** ensure Lock Arm is in 'down' position.

Check surrounding area for obstructions which may cause a hazard during raising. Be aware of the overall height of implement when raised. Steadily raise Power Harrow to transport position and "lock" hydraulics. Switch off tractor engine, Fit locking pins in position and secure with lynch pins provided. On machines fitted with **Hydraulic Catches** ensure lock Arm has 'sprung' into the lock position. Do not cross under Power Harrows folding path until pins are securely in place or Catch has fully locked in transport position.

Check all mounting and locking devices are correctly fitted and free from fatigue and ensure machine and tractor are in a stable condition before moving off.



Avoid transport on steep slopes and uneven ground that may de-stabilise tractor and machine.

HYDRAULIC-FOLDING STANDARD

TO LOWER FOR WORK

Ensure tractor is on level, stable ground.

Select neutral gear and apply brake.

Charge rams to fully raised position, "lock" Hydraulics and switch off engine.

Ensure surrounding area is clear of obstructions, and onlookers are clear of folding path. Be aware of overall width when fully lowered.

Remove locking pins from front of machine do not 'cross' folding path of machine.

On machines fitted with **Hydraulic Catches** fully charge Lift rams and then release Lock Arm by charging the Catch rams

Steadily lower machine to work position.

Turn off tractor engine and fit locking pins, secure in position with lynch pins provided.

TRANSPORT KITS



Be aware of trap points and weight shift when operating transport kit. Avoid transport on steep or very uneven surfaces that may de-stabilise tractor and machine.

Transport Kits are available on 3.5m and 4.0m Standard and Heavy Duty models of Power Harrow.

A **Central kit** is for Power Harrows only, an **Offset Kit** is available for use when 'A' frame drills are fitted.

TO LOWER FOR TRANSPORT

Disengage PTO drive, select neutral gear, apply brake.

Manually lower drawbar and fit locking pin.

Remove locking pin from Hydraulic wheels and lower to transport position.

Fit locking pin and secure with lynch pin provided.

TRANSPORT KITS

TO LOWER FOR TRANSPORT

Lower Power Harrow on to wheels and drawbar jack.

Ensure Power Harrow is stable and level (use drawbar jack to level machine.)

Disconnect PTO drive shaft and support in hook provided.

Disconnect transport kit Hydraulics and tractor top link.

Release lower hitch points and engage tractor pick up hitch in drawbar eye.

Move jack to transport position.



Be aware of overall length and stability of Power Harrow when transporting. Ensure all locking and mounting devices are correctly fitted and free from fatigue before moving off.

RAISING FOR WORK

Move jack to park position and lower pick up hitch.

Connect tractor lower links, select neutral gear and apply brake.

Connect tractor top link and transport kit Hydraulics.

Raise Power Harrow until wheels and jack are clear of ground.

Remove drawbar lock pin and manually raise so rubber buffer rests on strut.

Remove locking pin from transport wheels and raise to “park” position.

Fit locking pin and secure with lynch pins provided.

Connect PTO drive shaft and secure safety guard chain.

REAR POWER TAKE OFF KIT

Both Standard and Heavy Duty Power Harrows have an optional Rear Power Take Off kit. The RPTO shaft is secured in the cover by a bearing and drive is supplied from the input shaft via a splined coupler. The RPTO kit is capable of transmitting up to 15 HP (12kW). The RPTO kit is supplied fully assembled to aid easy fitment.

TO FIT R.P.T.P KIT

Tilt Power Harrow slightly Forward, Disengage PTO drive and switch off tractor engine.

Clean away any dirt from around the Pick-off gear cover. Undo the five retaining bolts and remove cover and gasket.

Place gasket on RPTO cover.

Fit cover by rotating RPTO shaft to align coupler and gearbox input shaft splines.

Secure in place with five retaining bolts.

If a pulley is required to be fitted on the RPTO shaft, remove guard and fit as detailed by manufacturer.



Be ware of hot oil in gearbox if machine has been in use prior to fitting.

DRILL 'A' FRAME KIT

An optional drill 'A' frame kit can be supplied for Heavy Duty and Standard Power Harrows.

TO FIT 'A' FRAME

Fit four bosses through holes in the rear of the hitch mounts.

Place 'a' frame over rear of hitch mounts and secure in place with four bolts and nyloc nuts provided.

Set adjustable top link and secure in place with pins and lynch pins provided.

Consult manufactures drill fitting instructions for mounting of drill on 'A' frame.



The fitting of an 'A' frame drill will significantly add to the weight of the machine ensure sufficient front weights are fitted to the tractor for stability.

REAR-HYDRAULIC LINKAGE KIT (HEAVY DUTY MODEL ONLY)

A rear Hydraulic linkage kit is available as an option for the Heavy Duty Power Harrow.

The rear Hydraulic linkage is designed for trailed drills with a **lift capacity of 2300 kg**. The linkage allows the drill to “float” on its own wheels whilst in work. The linkage will lift the drill up and over the rear roller to compact the weight and overall length of the machinery for turning in the headlands and transporting.

The kit is supplied fully assembled for ease of fitment. The kit and ram weighs 525 kg.



Ensure Power Harrow is standing on level ground and in a stable condition before fitting rear Hydraulic linkage. Use lifting equipment to aid fitment and avoid injury.

TO FIT REAR HYDRAULIC LINKAGE KIT

Remove existing top hitch plate and struts.

Lift the linkage and rest the top hitch mount plate on the headstock and secure in place.

Remove cross bar and link arms from linkage whilst supporting ‘A’ frame section.

Fit lower link arms to rear hole of hitch mount in tandem with fitting to ‘A’ frame pivot pin and secure in place with nyloc nuts, collar, and spring pins

Refit cross bar into linkage and struts to top hitch mount and secure in place.

REAR-HYDRAULIC LINKAGE KIT (HEAVY DUTY MODEL ONLY)

OPERATION

Set lower link plates to suit hitch points on drill. Read drill manufactures hand book fitting instructions before mounting drill.

Attach lower link points using locking plate and pin provided.

Fit and adjust top link assembly to suit drill.

Connect Hydraulic fitting to tractor spool (Note the linkage works on a single acting ram.)

Clear area of bystanders and lift the linkage up and down to ensure correct operation. Rubber buffers are fitted to stop the linkage overcentering when in use.

Always fit safety strap when raised for transport.



Ensure all mounting and locking devices are correctly fitted and free from fatigue before transporting Power Harrow and drill.

WHEEL MARK ERADICATORS

To eliminate wheel marks rigid Eradicators can be mounted on the front guard tool bar. Two types of Eradicator Assemblies are available -Light Duty and Heavy Duty. The operating depth is adjusted by releasing the U-Bolts, sliding the bar up or down as required and retighten the U-bolt (Light Duty) and by sliding arm and clevis adjustable by selecting correct pin holes in Eradicator arm (Heavy Duty).

Sideways adjustment is made by loosening the clamping bolts on the bracket and sliding the assembly to the required position.

LUBRICATION AND MAINTENANCE

Lubricants:-

Gearbox	- SAE 140 gear oil
Gear Train	- BP Energrease FG00-EP (approx.) 25kg/3m 29kg/3.5m 32kg/4m
Grease Points (inc. U/J Bearings)	- Litium Based
PTO Drive Shaft	- Graphite or moly bdenum disulphide grease
Oil Points	- General Purpose

SERVICE SCHEDULE

On delivery and after the first 8 hours

Nuts, Bolts and Keyways	Tighten
Power Harrow	Lubricate

Every 50 Hours

Nuts, Bolts and Keyways	Tighten
Power Harrow(PTO Drive Shaft Telescopic sections & Top Bearings)	Lubricate
Gearbox Oil Level	Check
Power Harrow Components	Check condition
Change Oil after first 10 Hours work and subsequently every 500 Hours.	

End of Season

Power Harrow	Keep dry with waterproof cover
Power Harrow	Clean down thoroughly
Power Harrow Components	Check condition
Guards, safety devices and logos	Check condition
Nut, Bolts and Keyways	Tighten
Power Harrow	Lubricate
Paintwork	Check and Touch up
Power Harrow	Store under cover away from birds and rodents

OPERATIONAL INSTRUCTIONS

As a general principle fine tilths are produced by a combination of fast blade rotation and slow forward tractor speed, slow blade rotation and faster tractor speed produces progressively coarser tilths.

The following operational characteristics should also be borne in mind.

- 1) Slower blade rotational speeds require less power than higher speeds.
- 2) High blade rotational speeds increase blade wear and may damage soil structure.
- 3) High travel speeds and fast blade rotation should be used only for preparing shallow seedbeds on previously broken ground.
- 4) As far as possible avoid cultivation when the soil is excessively wet or very dry. In conditions of high moisture content the soil may “ball” and clog the blades, low moisture content produces dust and high blade wear.

WORKING INFORMATION

Set the depth control pins to the required tillage depth and adjust the levelling bar accordingly.

Ensure the tractor hydraulics are set to “position” not “draft” control.

Engage the tractor PTO and drive forward progressively lowering the blades into the ground until full tillage depth is achieved.

Proceed for a short distance and check whether the resultant tilth is satisfactory and uniform across the width of the machine. If not, make appropriate adjustments to produce the required tilth utilising the slowest blade speed which allows a reasonable ground speed.

Should any problems be experienced in obtaining a high quality tilth consult the “Operators Checklist”.

OPERATORS CHECKLIST

Before commencing cultivation ensure:

- 1) Guards and safety devices are in position and working.
- 2) The tractor hydraulics i.e. in “Position Control”.
- 3) The PTO drive shaft does not exceed an angle of 20 degrees and the Power Harrow is set to lift only 10-20cm off the ground.

OPERATORS CHECKLIST

Should difficulty be experienced in obtaining a satisfactory tilth the following action should be taken.

Tilth Too Coarse

Increase blade speed.
Reduce tractor travel speed.
Lower levelling bar.
Work soil in drier condition.

Soil "Balls" On Blades

Replace badly worn or bent blades.
Increase blade speed.
Remove any obstacles from blades.
Work soil in drier condition.

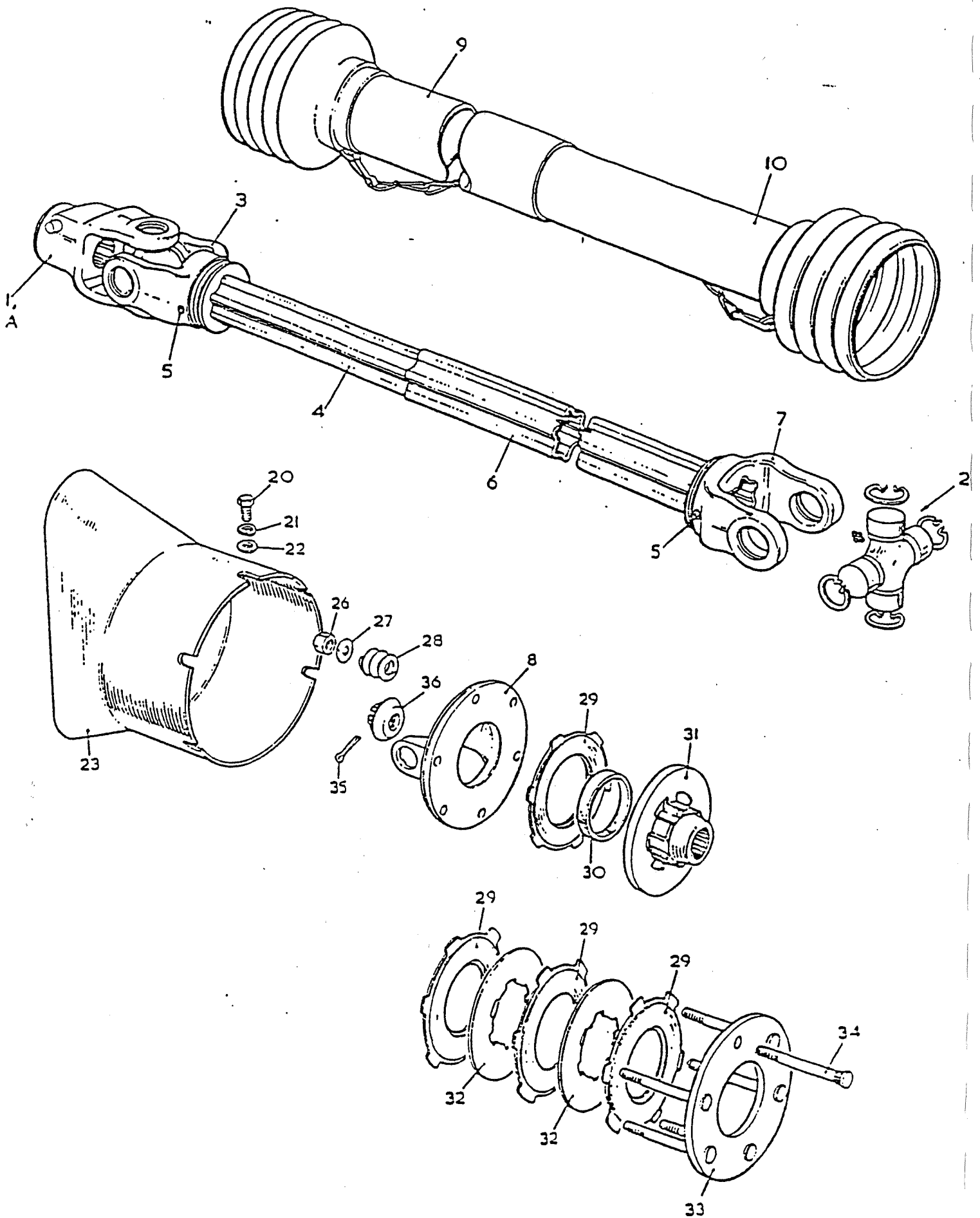


When cultivating on hillsides drive with caution and work up or down slopes if possible to reduce terracing effect. Always raise the Power Harrow and disengage the PTO drive when turning at headlands.



CONTENTS

Page No.	Title
1	Contents List
2	Identification Plate
3/4	Universal Joint/Clutch Assy.
5/6	Gearbox
7/8	Rotor Transmission
9	Three Point Linkage Assy.
10	Hull Assy.
11	Sideguard Assy.
12	Levelling Bar
13	Depth Control Assy.
14	Packer Roller
15/16	Transport Axle Lift Assy.
17	Transport Drawbar
17	Eradicator Tine Assy.
18	Accord Drill Mounting Bracket & Rear PTO Assy.
19	Hydraulic Linkage Assy.
20	Hydraulic Linkage Ram Assey.

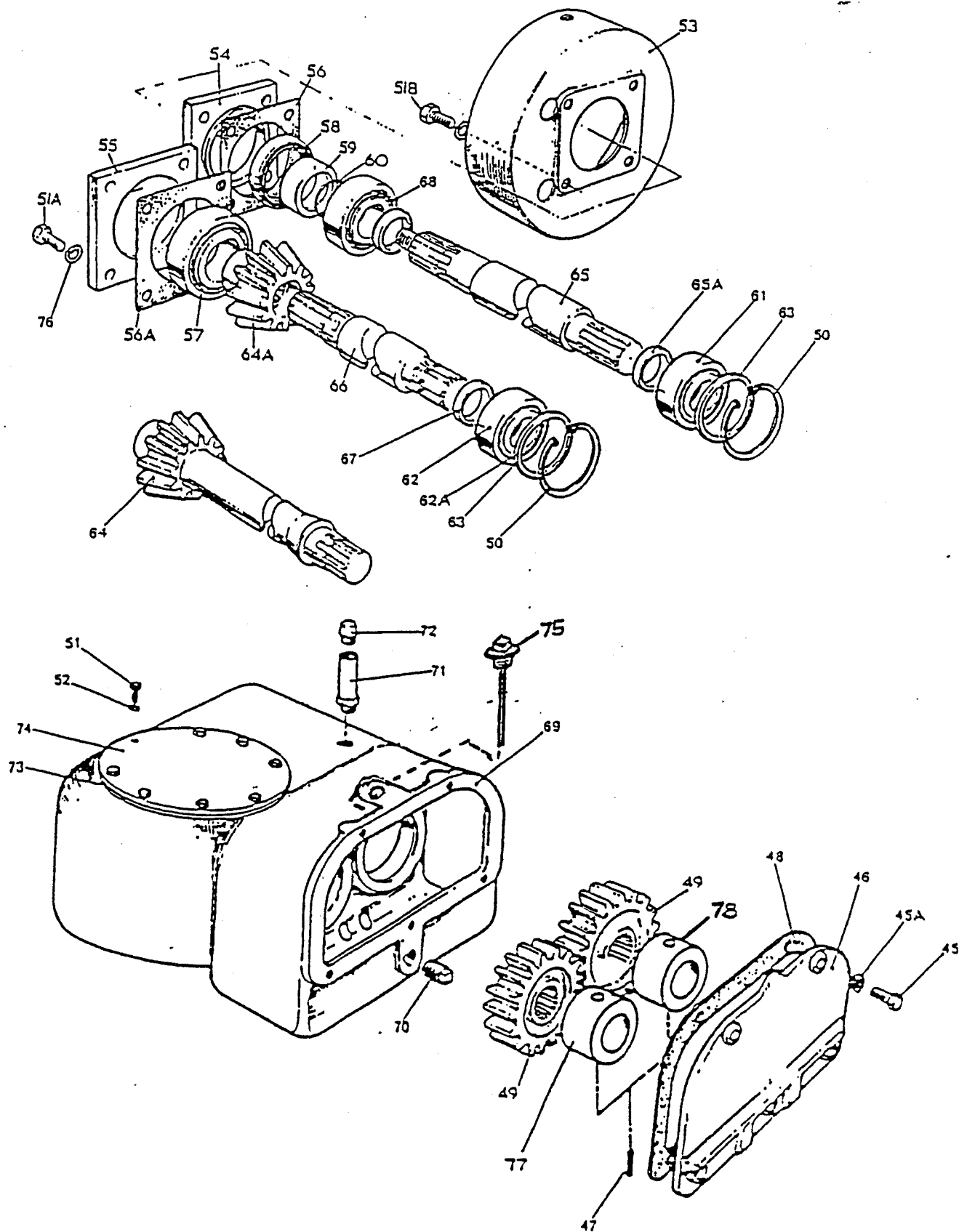


UNIVERSAL JOINT/CLUTCH ASSEMBLY

ITEM	PART NUMBER	DESCRIPTION	QUANTITY	
			3 & 3.5m	4m
	700345	PTO Drive Shaft Assy (540) comprising items 1-10ins	1	
	700346	PTO Drive Shaft Assy (1000) comprising items 1a-10ins	1	
	700362	PTO Drive Shaft Assy 1 3/8" -21 (660-870 CRS)		1
	700366	PTO Drive Shaft Assy 1 3/4" -20QS (660-870 CRS)		1
	700367	PTO Drive Shaft Assy 1 3/8" -21QS (660-870 CRS)		1
	700368	PTO Drive Shaft Assy 1 3/4" -20 (660-870 CRS)		1
	700365	PTO Drive Shaft Assy 1 3/8" -21 (810-1095 CRS)		1
	700369	PTO Drive Shaft Assy 1 3/4" -20 (810-1095 CRS)		1
	700370	PTO Drive Shaft Assy 1 3/8" -21QS (810-1095 CRS)		1
	700371	PTO Drive Shaft Assy 1 3/8" -20QS (810-1095 CRS)		1
1	204047810	QR Yoke Assy (6 Splines)	1	
1	204046840	Pin Kit	1	
1	204047880	QR Yoke Assy (21 Splines)	1	
1	204046840	Pin Kit	1	
1	204047923	QR Yoke Assembly 1 3/8"-21		1
1	204066239	QR Pin Kit		1
1	204047928	QR Yoke Assembly 1 3/4"-20		1
1	204066248	QR Pin Kit		1
1	204047929	QS Yoke Assembly 1 3/8"-21		1
1	204047930	QS Yoke Assembly 1 3/4"-20		1
1	204047922	QS Yoke Assembly 1 3/8"-6 (540 PTO)		1
2	204046920	Spider Kit	2	
2	204066244	Spider Kit		2
3	204047860	Yoke Male Shaft	1	
3	204047924	Yoke Male Shaft		1
4	204064410	Male Shaft	1	
4	204067360	Male Shaft (640 Long)		1
4	204067190	Male Shaft (490 Long)		1

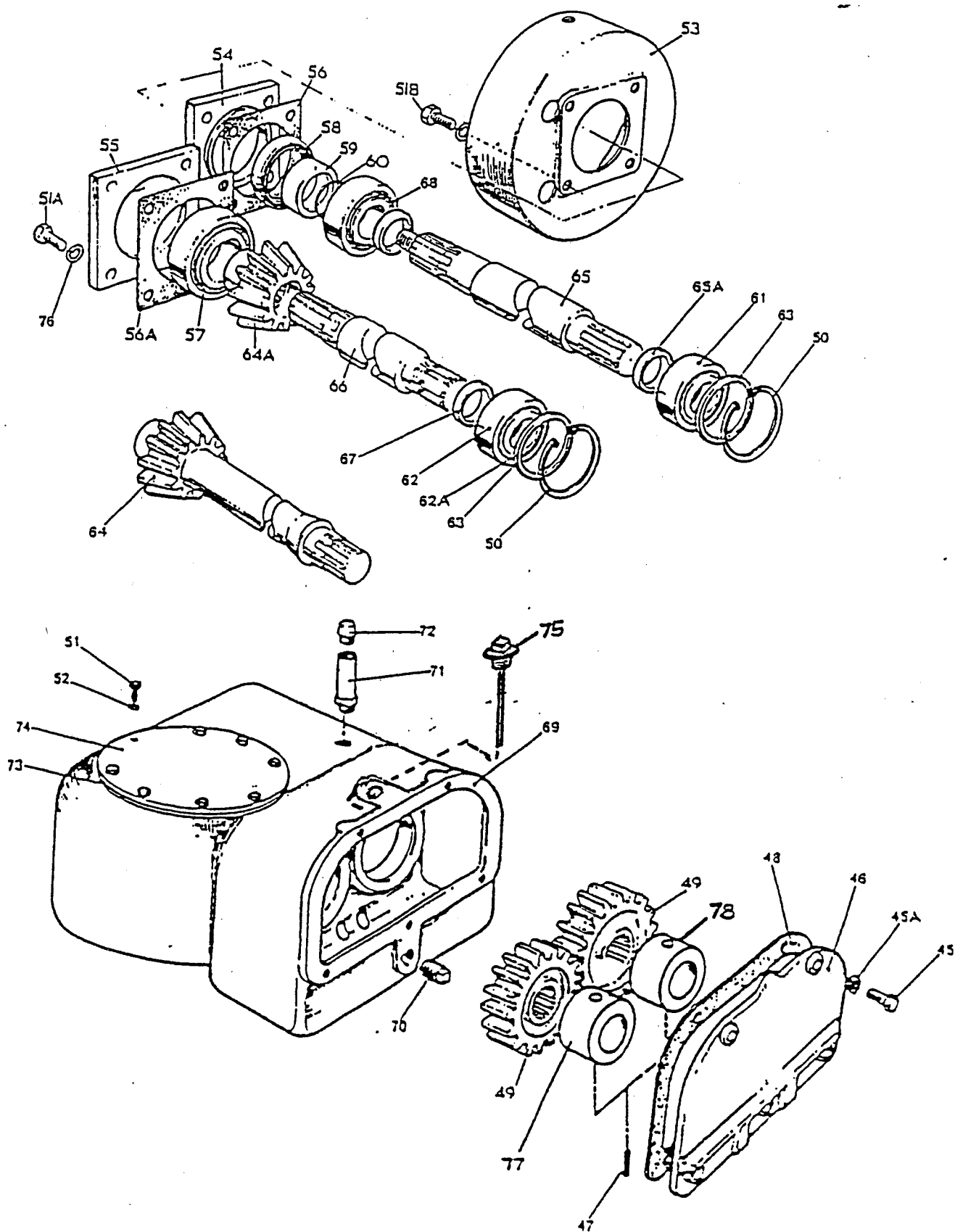
UNIVERSAL JOINT/CLUTCH ASSEMBLY

ITEM	PART NUMBER	DESCRIPTION	QUANTITY	
			3/3.5m	4m
5	204046950	Tension Pin	2	
5	204066247	Tension Pin		2
6	204064411	Female Tube	1	
6	204067200	Female Tube (460 Long)		1
6	204067370	Female Tube (610 Long)		1
7	204047870	Yoke Female Tube	1	
7	204047925	Yoke Female Tube		1
8	204047820	Clutch Plate	1	
8	800323	Clutch Plate		1
9	204059907	Outer Guard(inc.Chain)	1	
9	204067210	Outer Guard(inc.Chain)390 Long		1
9	204067390	Outer Guard(inc.Chain)540 Long		1
10	204059906	Inner Guard(inc.Chain)	1	
10	204067220	Inner Guard(inc.Chain)390 Long		1
10	204067380	Inner Guard(inc.Chain)540 Long		1
N/S	204012790	Anchor Chain	1	1
20	301410165	Setscrew	3	3
21	308100045	Spring Washer	3	3
22	308100025	Plain Washer	3	3
23	800990	Clutch Guard	1	
23	820497	Clutch Guard		1
	800321	Clutch Assembly	1	
26	307212015	Nut	6	6
27	308120025	Plain Washer	6	6
28	650349	Spring	6	6
29	650347	Friction Disc	4	4
30	650345	Sleeve	1	1
31	800492	Clutch Disc	1	1
32	650346	Wearing Disc	2	2
33	330358	Pressure Plate Assembly	1	1
34	330359	Stud	6	6
35	208016020	Split Cotter	1	1
36	650084	Special Nut	1	1



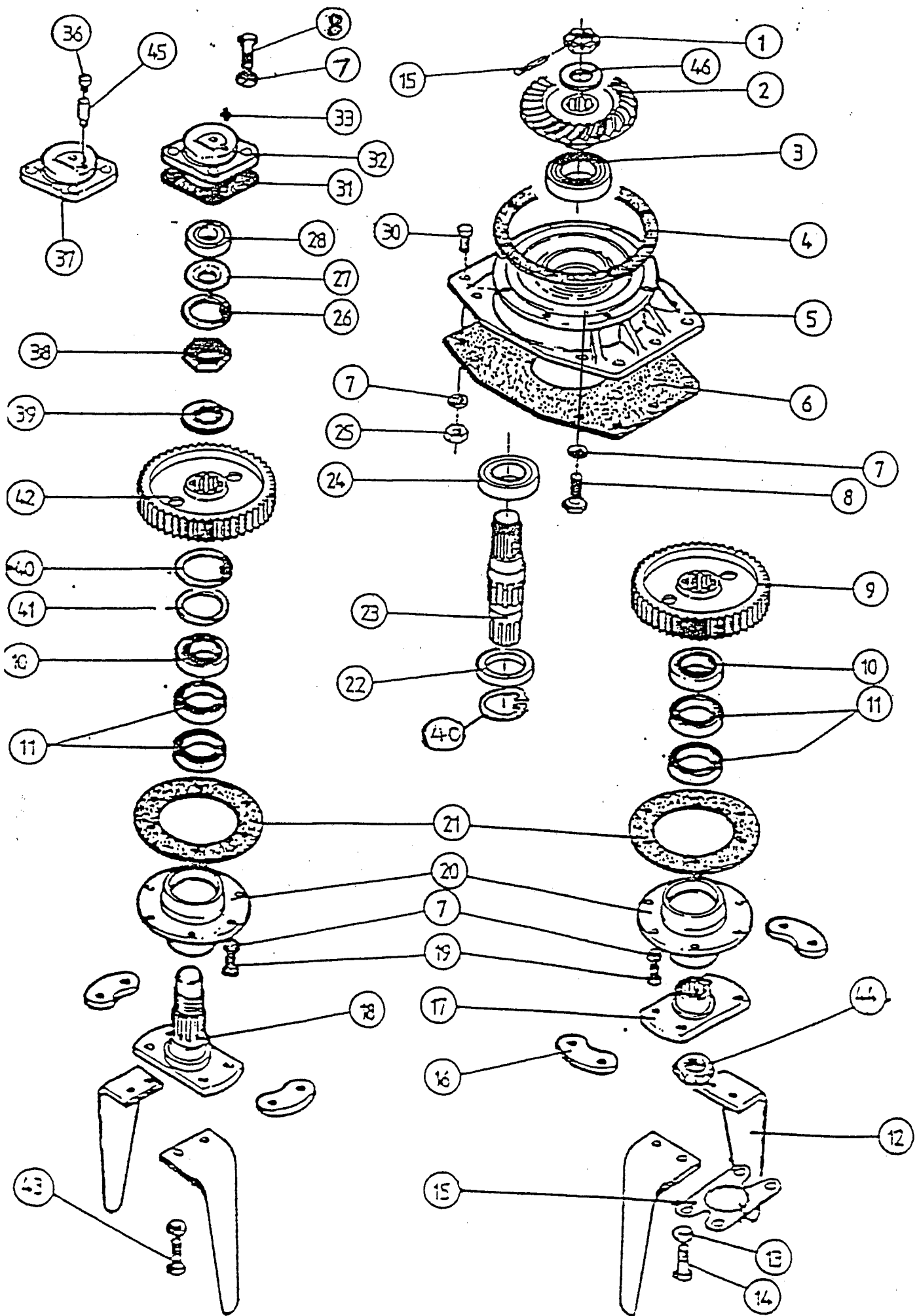
GEARBOX

ITEM	PART NUMBER	DESCRIPTION	QUANTITY
	820007	Gearbox Assembly (100 PTO)	1
	820008	Gearbox Assembly (540 PTO)	1
45a	301410255	Setscrew M10 x 25 Lg Grade 8.8	5
45	308100045	Spring Washer M10	5
46	820952	Pick-Off Cover	1
47	208089240	Tension Pin 10 x 65 Lg	2
48	800345	Gasket	1
49	800363	Pick-Off Gear 21T	1
49	800366	Pick-Off Gear 18T	1
49	800364	Pick-Off Gear 20T	1
49	800365	Pick-Off Gear 19T	1
49	800362	Pick-Off Gear 22T	1
49	800367	Pick-Off Gear 17T	1
49	800507	Pick-Off Gear 15T	1
49	800508	Pick-Off Gear 23T	1
50	208101540	Internal Circlip	2
51	301408205	Setscrew M8 x 20 Lg Grade 8.8	8
51a	301412305	Setscrew M12 x 30 Lg Grade 8.8	4
51b	301212405	Bolt M12 x 40 Lg Grade 8.8	4
52	308080045	Spring Washer M8	8
53	335330	Backplate-Clutch Guard	1
54	800346	Oilseal Housing	1
55	800347	Front Cover	1
56	800354	Gasket	1
56	800355	Shim 0.1mm	A/R
56	800356	Shim 0.2mm	A/R
56	800357	Shim 0.5mm	A/R
56a	800358	Gasket	1
56a	800359	Shim 0.1mm	A/R
56a	800360	Shim 0.2mm	A/R
56a	800361	Shim 0.5mm	A/R
57	252846121	Bearing	1
58	263022043	Oilseal	1
59	800502	Sleeve	1
60	202025130	'O' Ring	1
61	252041161	Bearing	1
62	252041121	Bearing	1
62a	800368	Shim 0.1mm	A/R
62a	800369	Shim 0.2mm	A/R
62a	800370	Shim 0.5mm	A/R



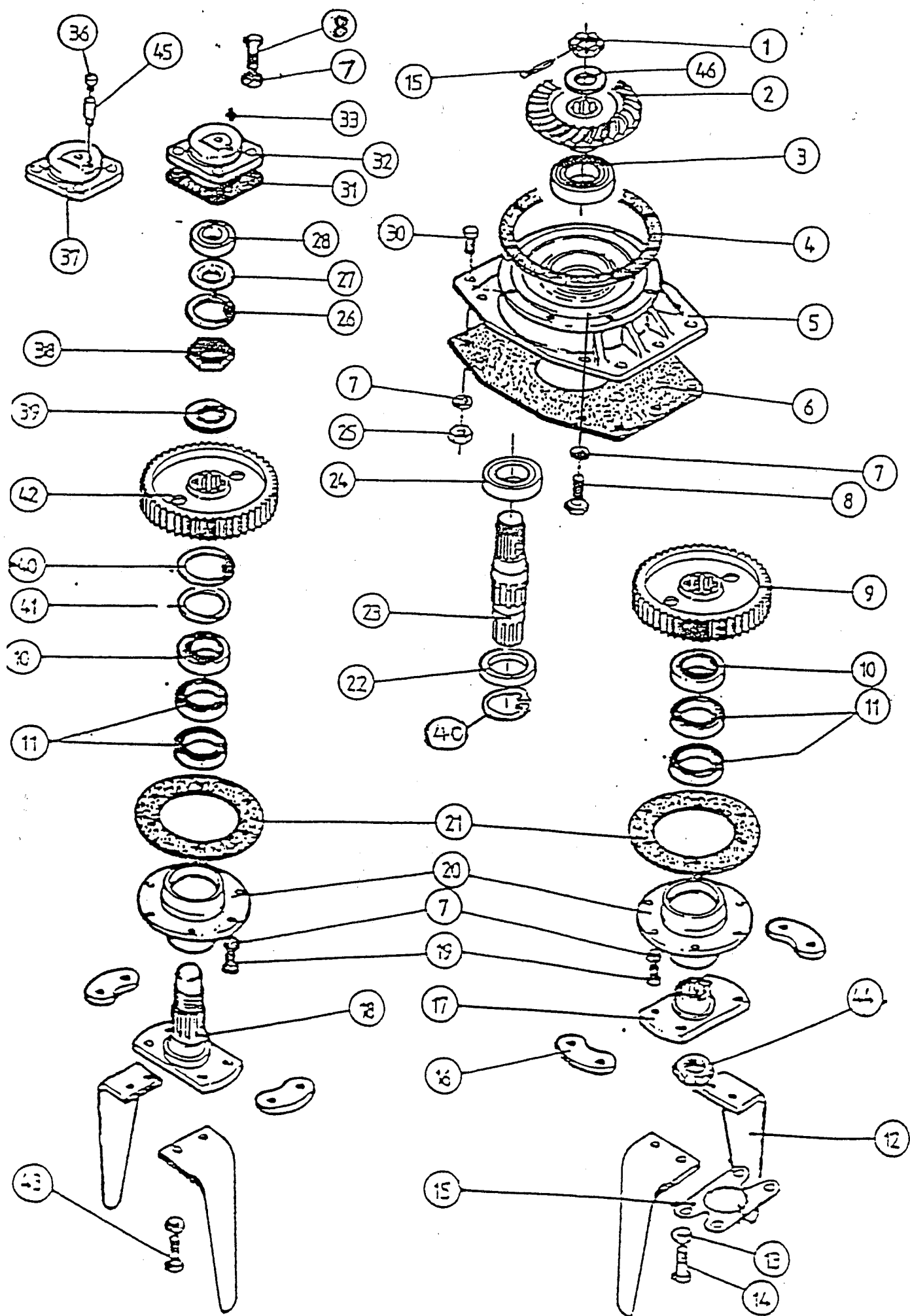
GEARBOX

ITEM	PART NUMBER	DESCRIPTION	QUANTITY
63	800352	Support Washer	2
64	800349	Pinion/Shaft (1000 PTO)	1
64a	800371	Pinion (540 PTO)	1
65	820943	Input Shaft	1
65a	800351	Bearing Spacer	2
66	800372	Pinion Shaft (540 PTO)	1
67	800490	Spacer (1000 PTO)	1
67	800491	Spacer (540 PTO)	1
68	252037121	Bearing	1
69	820094	Gearbox Case	1
70	203031180	Plug 3/8" BSP	1
71	330040	Extension Tube	1
72	335270	Breather	1
73	820100	Gasket	1
74	820092	Top Cover	1
75	820946	Dipstck	1
76	308120045	Spring Washer M12	8
77	820945	Spacer Tube LH	1
78	820944	Spacer Tube RH	1



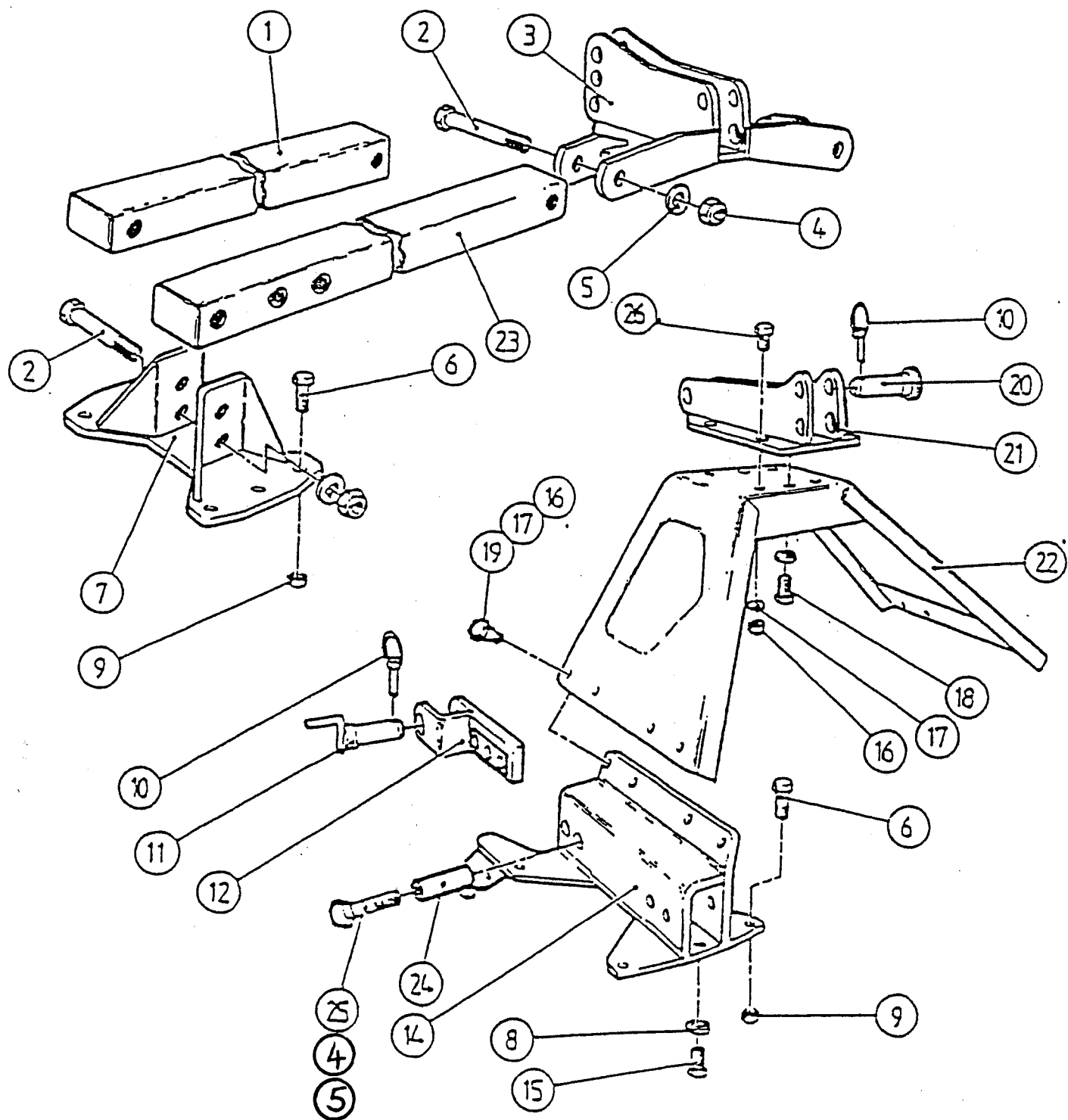
ROTOR TRANSMISSION

ITEM	PART NUMBER	DESCRIPTION	QUANTITY		
			3m	3.5m	4m
1	800330	Special Nut	1	1	1
2	820336	Crown Wheel - 1000 PTO	1	1	1
2	820335	Crown Wheel - 540 PTO	1	1	1
3	253353130	Taper Bearing Roller	1	1	1
4	820096	Gasket	1	1	1
4	820097	Shim 0.1mm		A/R	
4	820098	Shim 0.2mm		A/R	
4	820099	Shim 0.5mm		A/R	
5	820213	Gearbox Base	1	1	1
6	820394	Base Gasket	1	1	1
7	308120120	'Schnorr' Washer M12	130	150	170
8	309312305	Setscrew M12(fine)x30 Lg Grade 10.9	56	64	72
9	820103	Drive Gear	1	1	1
10	255512295	Ball Bearing	12	14	16
11	261075101	Oilseal	24	28	32
12	820381	Blade (12") LH	12	14	16
12	820380	Blade (12") RH	12	14	16
13	209019420	Spring Washer M16(Hvy)	48	56	64
14	820955	Blade Bolt 65	4	4	4
15	820492	Locking Plate	1	1	1
16	820366	Clamp Nut	24	28	32
(Opt 16)	(208109370)	(Flanged Nyloc Nut)	(48)	(56)	(64)
17	820393	Blade Mount	1	1	1
18	820392	Driven Shaft	11	13	15
19	309312355	Setscrew M12(Fine)x35 Lg Grade 10.9	72	84	96
20	820104	Bearing Housing	12	14	16
21	820106	Gasket	12	14	16
22	264730051	Oilseal	1	1	1
23	820334	Drive Shaft	1	1	1
24	256512411	Taper Roller Bearing	1	1	1
25	307512055	Nyloc Nut M12(Fine)	6	6	6
26	208101480	Internal Circlip	11	13	15
27	820112	Bearing Shield	11	13	15
28	254090231	Ball Bearing	11	13	15
30	309112455	Hx Hd Bolt M12(Fine)x35 Lg Grade 8.8	6	6	6



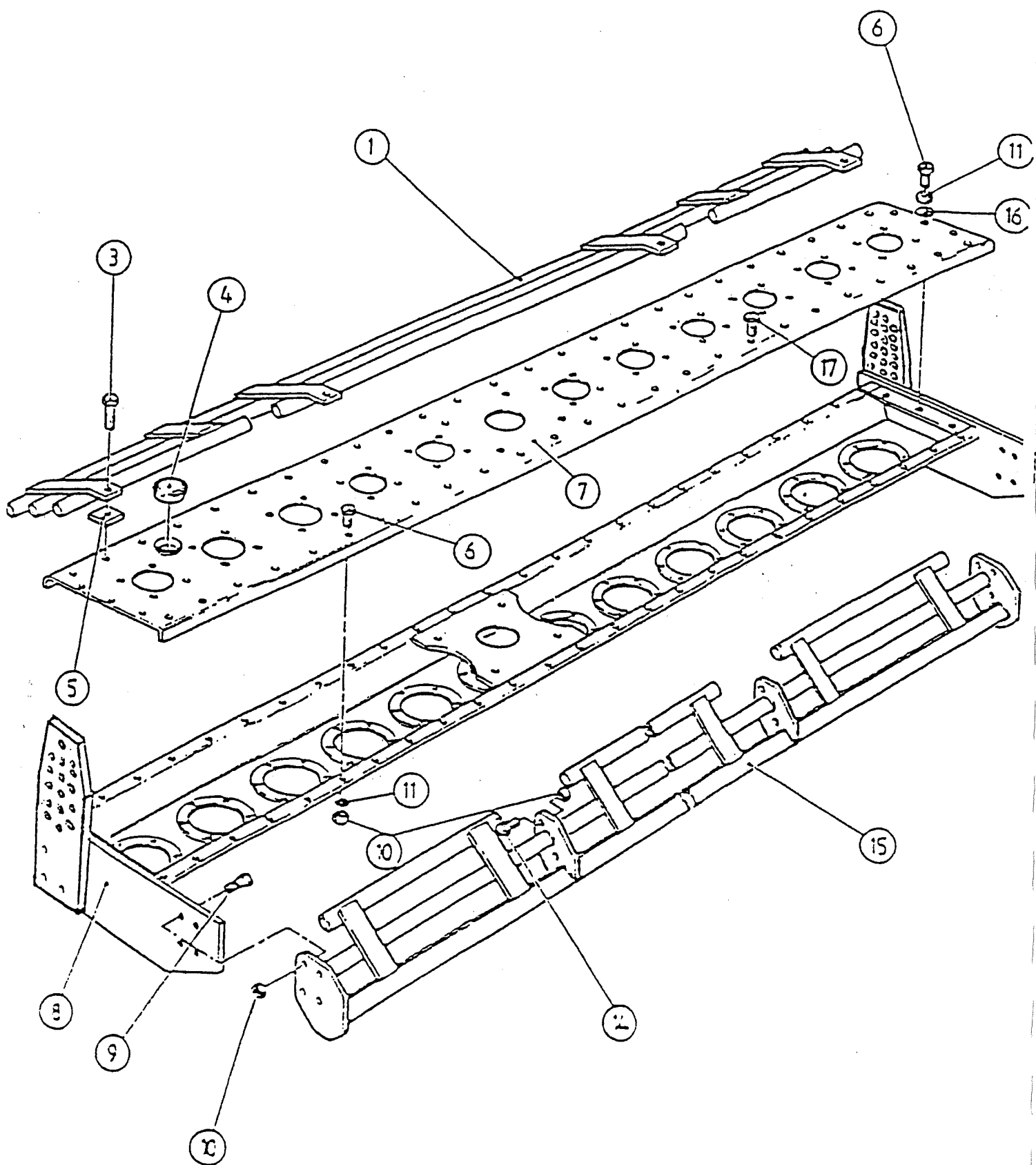
ROTOR TRANSMISSION

ITEM	PART NUMBER	DESCRIPTION	QUANTITY		
			3m	3.5m	4.0m
31	820145	Gasket	11	13	15
32	820111	Top Bearing Housing	10	12	14
33	202030030	Grease Nipple	11	13	15
36	335270	Breather	1	1	1
37	820388	Top Bearing Housing	1	1	1
38	208109350	Special Nut	11	13	15
39	820113	Tab Washer	11	13	15
40	208101590	Internal Circlip	1	1	1
41	820110	Support Washer	11	13	15
42	820109	Driven Gear	11	13	15
43	820954	Balde Bolt (60)	44	52	60
44	820493	Nut	1	1	1
45	330040	Extension Tube	1	1	1
46	820494	Special Washer	1	1	1



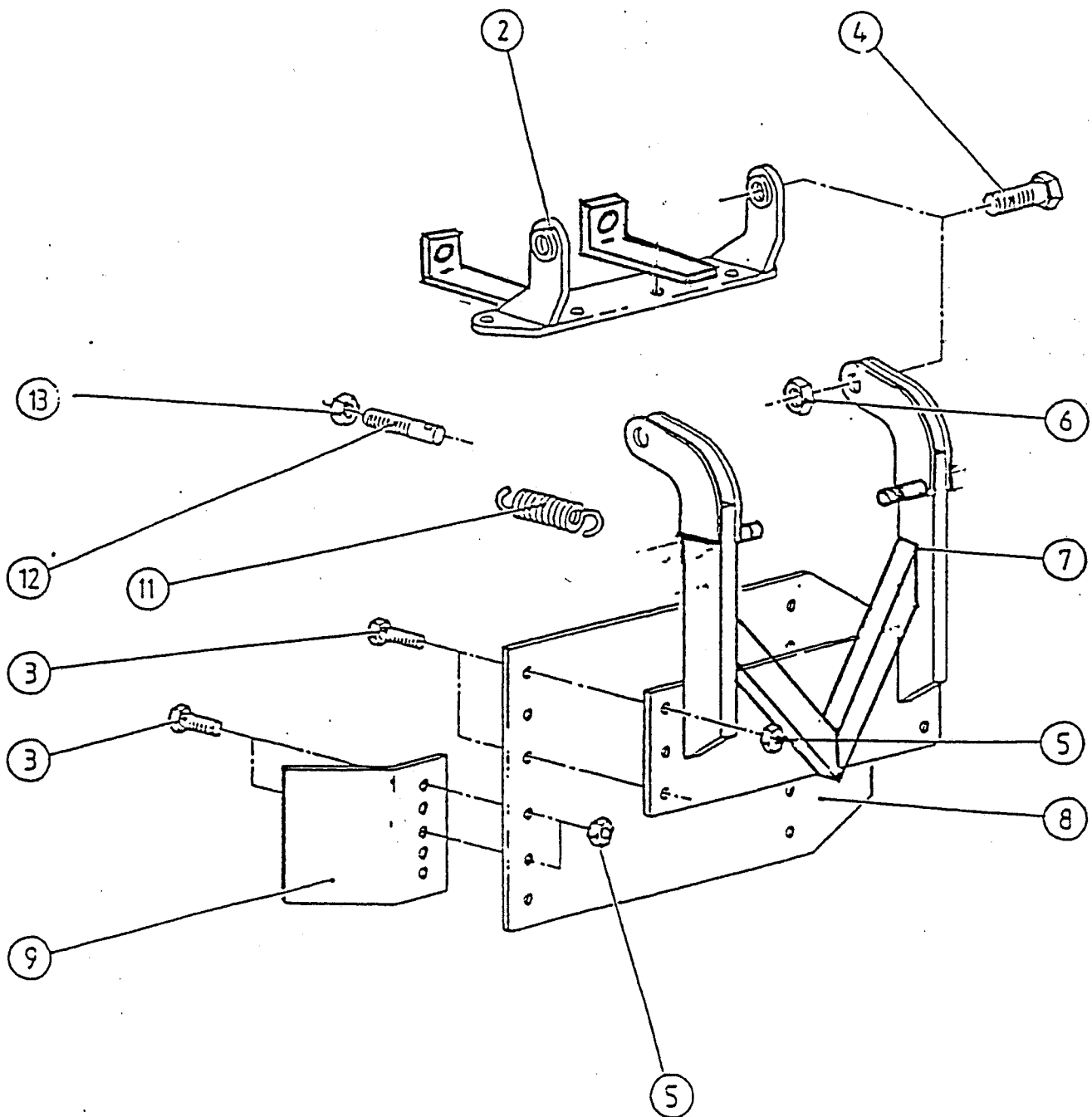
THREE POINT LINKAGE ASSEMBLY

ITEM	PART NUMBER	DESCRIPTION	QUANTITY	
			3 & 3.5m	4m
1	820406	Strut		2
2	301624195	Bolt M24 x 190 Lg Grade 8.8		4
3	820405	Top Hitch		1
4	307224055	Nyloc Nut M24	4	8
5	308240015	Plain Washer M24	4	8
6	309116505	Bolt M16(Fine)x50 Lg Grade 8.8	8	20
		Grade 10.9		
7	820453	Strut Anchor		2
8	308120045	Spring Washer M12	4	4
9	307616055	Nyloc Nut M16(Fine)	8	20
10	208092060	Linch Pin	7	7
11	820692	Hitch Pin CAT 2	2	2
(Opt 11)	(820693)	(Hitch Pin CAT 3)	(2)	(2)
12	820750	Forged Hitch Arm	2	2
14	820036	Hitch RH	1	1
14	820037	Hitch LH	1	1
15	301312305	Setscrew M12(Fine)x30 Lg	4	4
		Grade 8.8		
16	307216015	Nyloc Nut M16(fine)	12	12
17	308160045	Spring Washer M16	14	14
18	301416355	Setscrew M16 x 35 Lg	2	2
		Grade 8.8		
19	820382	Special Bolt	8	8
20	800230	Top Link Pin CAT 2	1	1
(Opt 20)	(800476)	(Top Link Pin CAT 3)	(1)	(1)
21	820397	Top Hitch	1	
22	820013	Top Mast	1	1
23	820474	Bossed Strut		A/R
24	820412	Clamp Spacer	4	4
25	820383	Hitch Arm Bolt	4	4
26	309116455	Bolt M16(Fine)x45 Lg	4	4
		Grade 8.8		



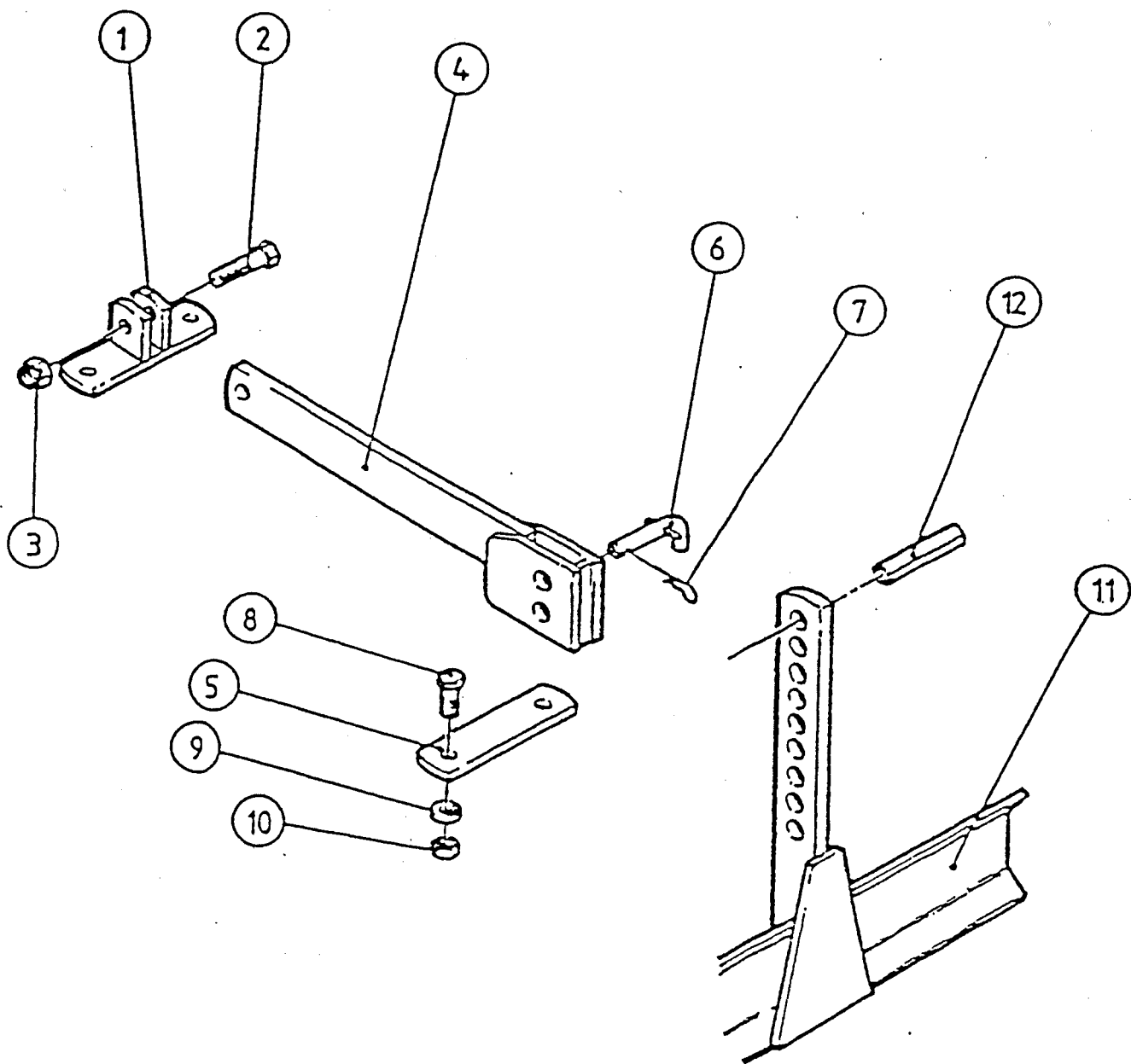
HULL ASSEMBLY

ITEM	PART NUMBER	DESCRIPTION	QUANTITY		
			3m	3.5m	4m
1	821710	Rear Guard			1
1	821711	Rear Guard		1	
1	821712	Rear Guard	1		
3	301112705	Bolt M12(Fine)x70 Lg Grade 8.8	4	4	4
4	203036250	Cap	1	1	1
5	820189	Spacing Block	2	2	
6	301312305	Setscrew M12(Fine)x30 Lg Grade 8.8	24	32	26
7	820032	Top Cover	1		
7	820305	Top Cover		1	
7	820409	Top Cover			1
8	820907	Hull	1		
8	820908	Hull		1	
8	820909	Hull			1
9	301112455	Bolt M12(Fine)x45 Lg Grade 8.8	8	8	8
10	307512045	Nyloc Nut M12(Fine)	36	44	40
11	308120045	Spring Washer M12	30	38	34
14	301112405	Bolt M12(Fine)x40 Lg Grade 8.8	4	4	4
15	821716	Front Tube	1		
15	821715	Front Tube		1	
15	821714	Front Tube			1
16	308120015	Plain Washer	6	6	6
17	820399	Dowel Bolt	4	4	6
N/S	820697	Gasket	2	2	2
N/S	820699	Gasket	2		
N/S	820698	Gasket		2	
N/S	820696	Gasket			2



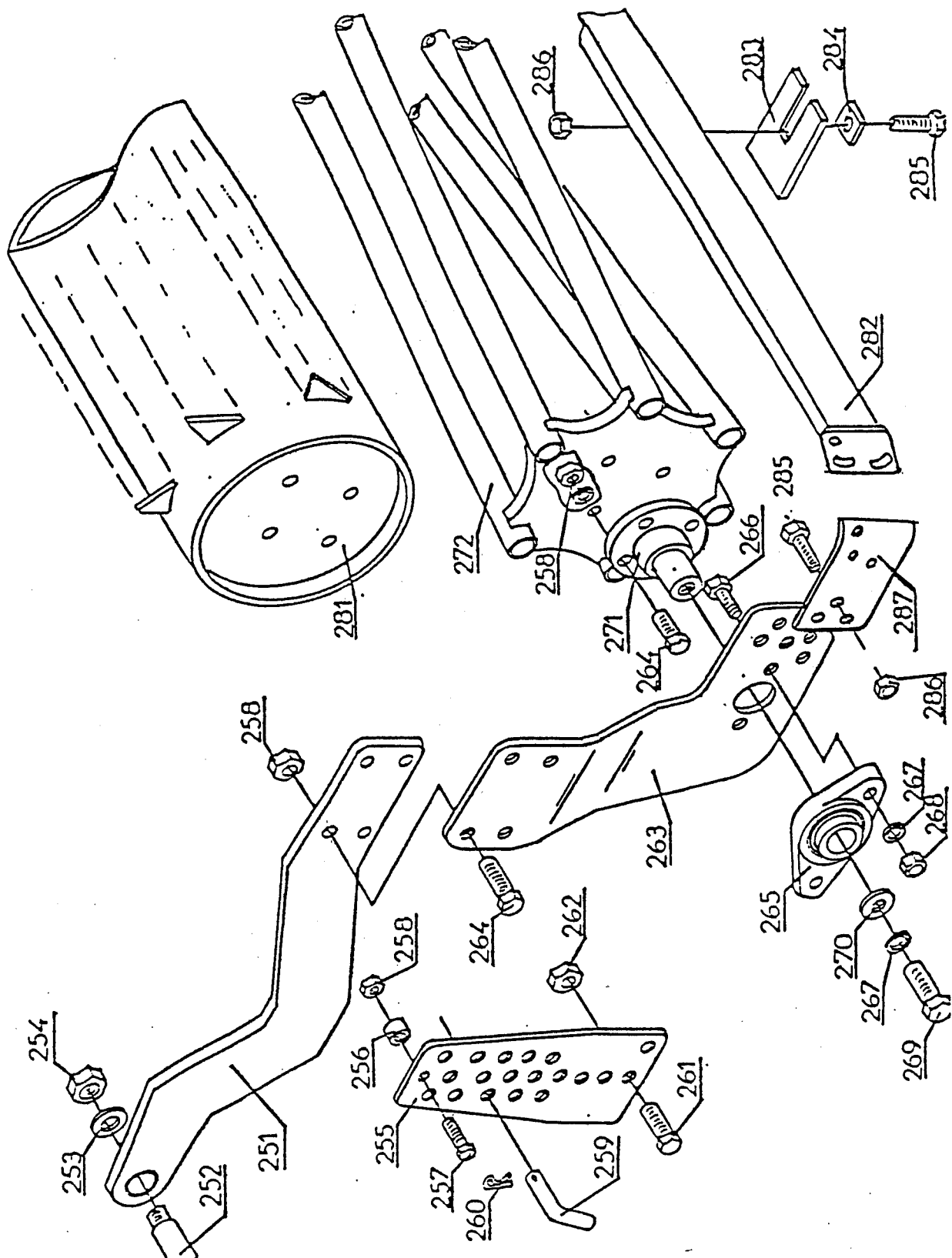
SIDEGUARD ASSEMBLY

ITEM	PART NUMBER	DESCRIPTION	QUANTITY
2	820914	Pivot Bracket	2
3	301112505	Bolt M12(Fine)x50 Lg Grade 8.8	16
4	301120705	Bolt M20(Fine)x70 Lg Grade 8.8	4
5	307512055	Nyloc Nut M12(Fine)	16
6	307520055	Nyloc Nut M20(Fine)	4
7	820912	Mounting Bracket	2
8	820292	Sideguard	2
9	820414	Reflector	2
11	900471	Spring	4
12	040900	Spring Tensioners	4
13	107210015	Nut 5" 8"UNC	8



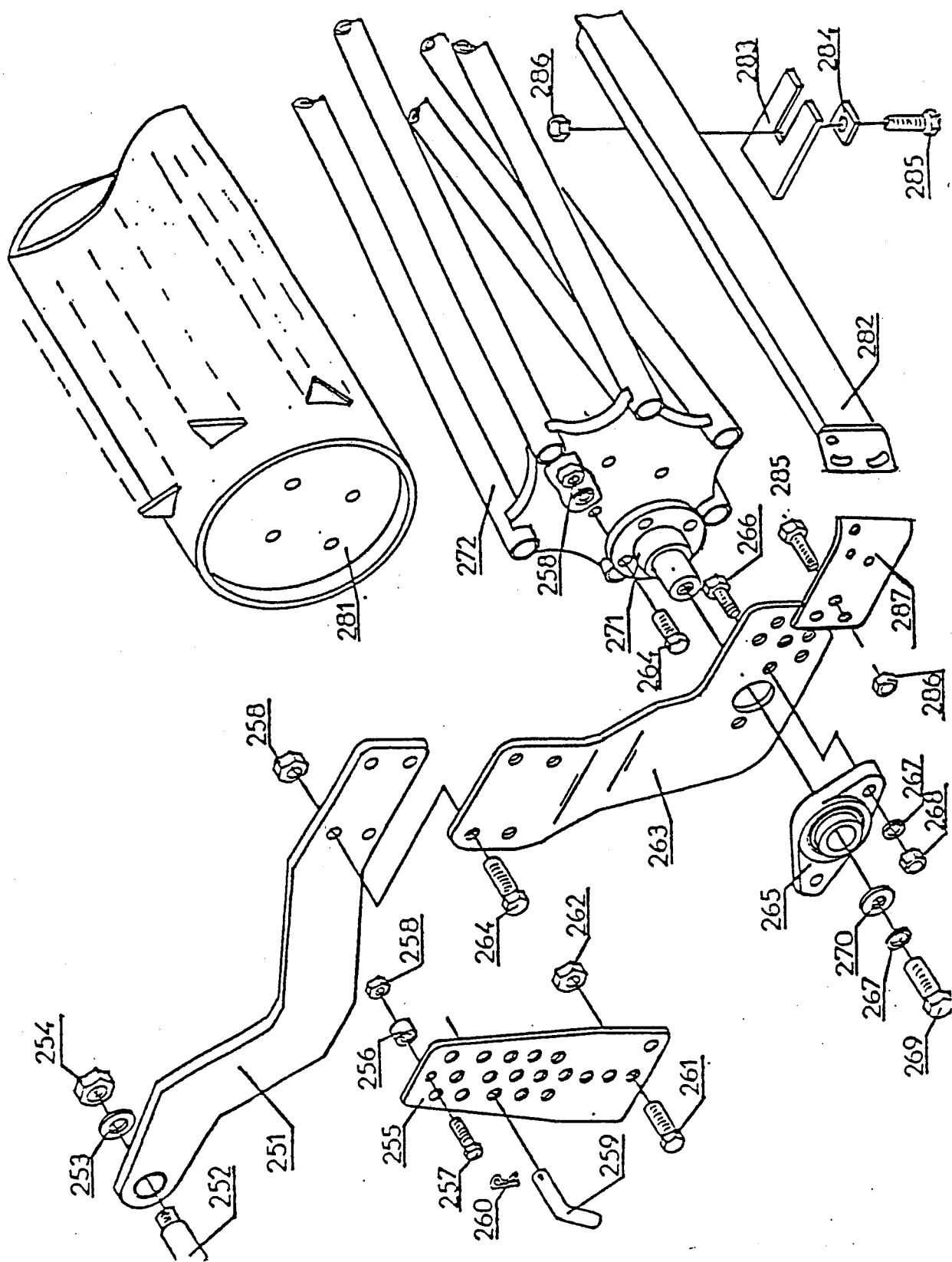
LEVELLING BAR

ITEM	PART NUMBER	DESCRIPTION	QUANTITY
1	820082	Pivot	2
2	301116805	Bolt M16(Fine)x80 Lg Grade 8.8	2
3	307516055	Nyloc Nut M16(Fine)	2
4	820087	Lever	2
5	820083	Pivot Base	2
6	821182	Pin	2
7	208014410	'R' Clip	2
8	301112455	Bolt M12(Fine) x 45 Lg Grade 8.8	8
9	308120120	'Schnorr' Washer	8
10	307512055	Nyloc Nut M12(Fine)	8
11	821698	Levelling Bar 3m	1
11	821697	Levelling Bar 3.5m	1
11	821696	Levelling Bar 4m	1
12	208098035	Tension Pin (dia 12 x 120 Lg)	2



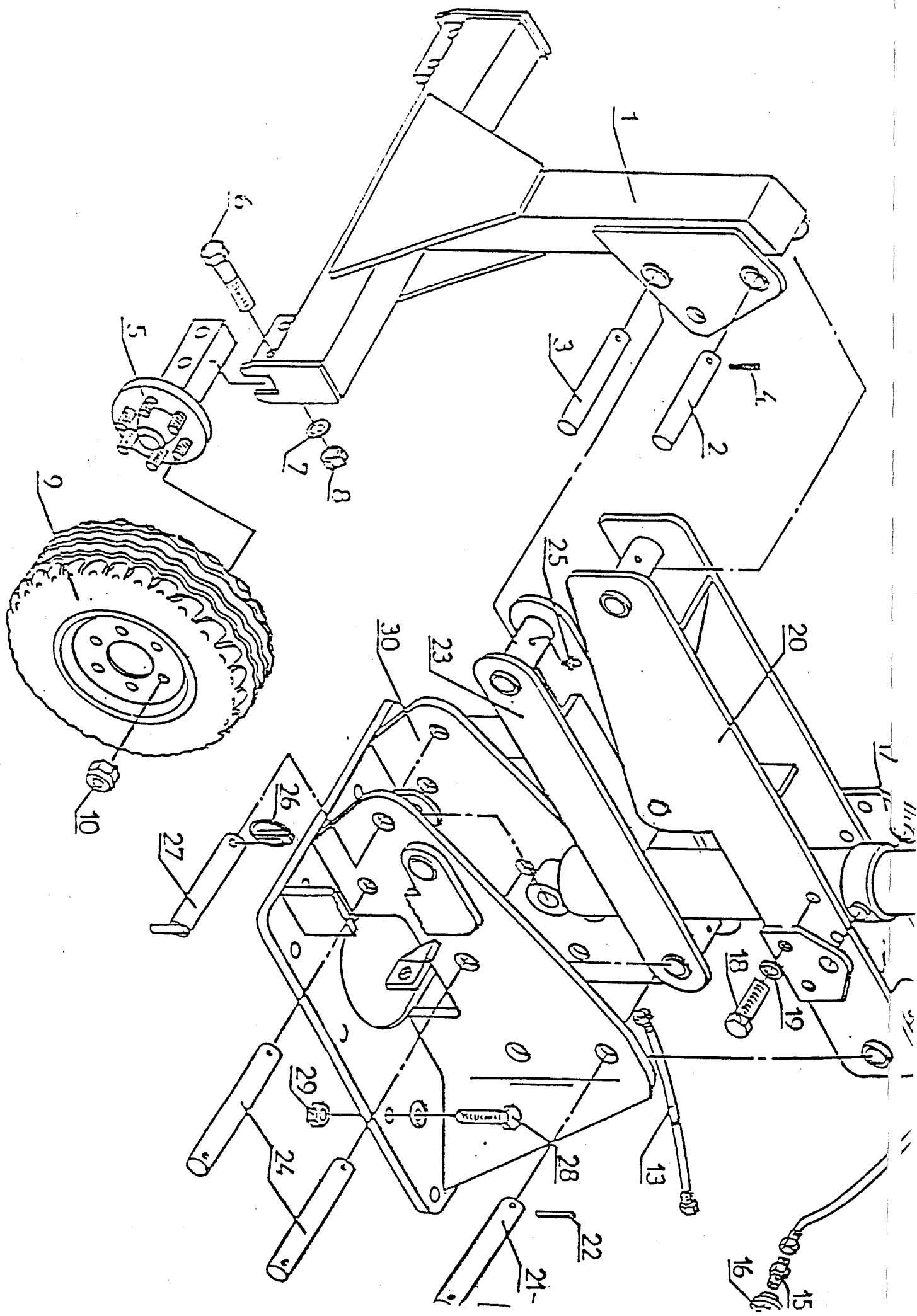
DEPTH CONTROL ASSEMBLY

ITEM	PART NUMBER	DESCRIPTION	QUANTITY
251	820917	Roller Arm LH	1
N/S	820918	Roller Arm RH	1
252	821629	Pivot Bolt	2
253	308160015	Flat Washer M16	2
254	307216055	Nyloc Nut M16	2
255	821571	Depth Control	2
256	821637	Spacer	2
257	301112605	Hex Head Bolt M12(Fine)x60 Lg Grade 8.8	2
258	307512015	Nyloc Nut M12(Fine)	18
259	820841	Pin	4
260	208014410	'R' Clip	4
261	301220805	Hex Head Bolt M20x80 Lg Grade 8.8	4
262	307220055	Nyloc Nut M20	4
263	821634	Roller Plate LH	1
263	821635	Roller Plate RH	1
264	301112455	Hex Head Bolt M12(Fine)x45 Lg Grade 8.8	16
265	255015521	Flange Bearing (dia 50 mm)	2
266	301116555	Hex Head Bolt M12(Fine)x55 Lg Grade 8.8	4
267	308160045	Spring Washer M16	6
268	307516055	Nyloc Nut M16(Fine)	4
269	301416350	Setscrew M16 x 35 Lg Grade 8.8	2
270	800985	Washer	2
271	820489	Axle	2
272	820043	Crumble Roller 3.0m	1
272	820309	Crumble Roller 3.5m	1
272	820644	Crumble Roller 4.0m	1



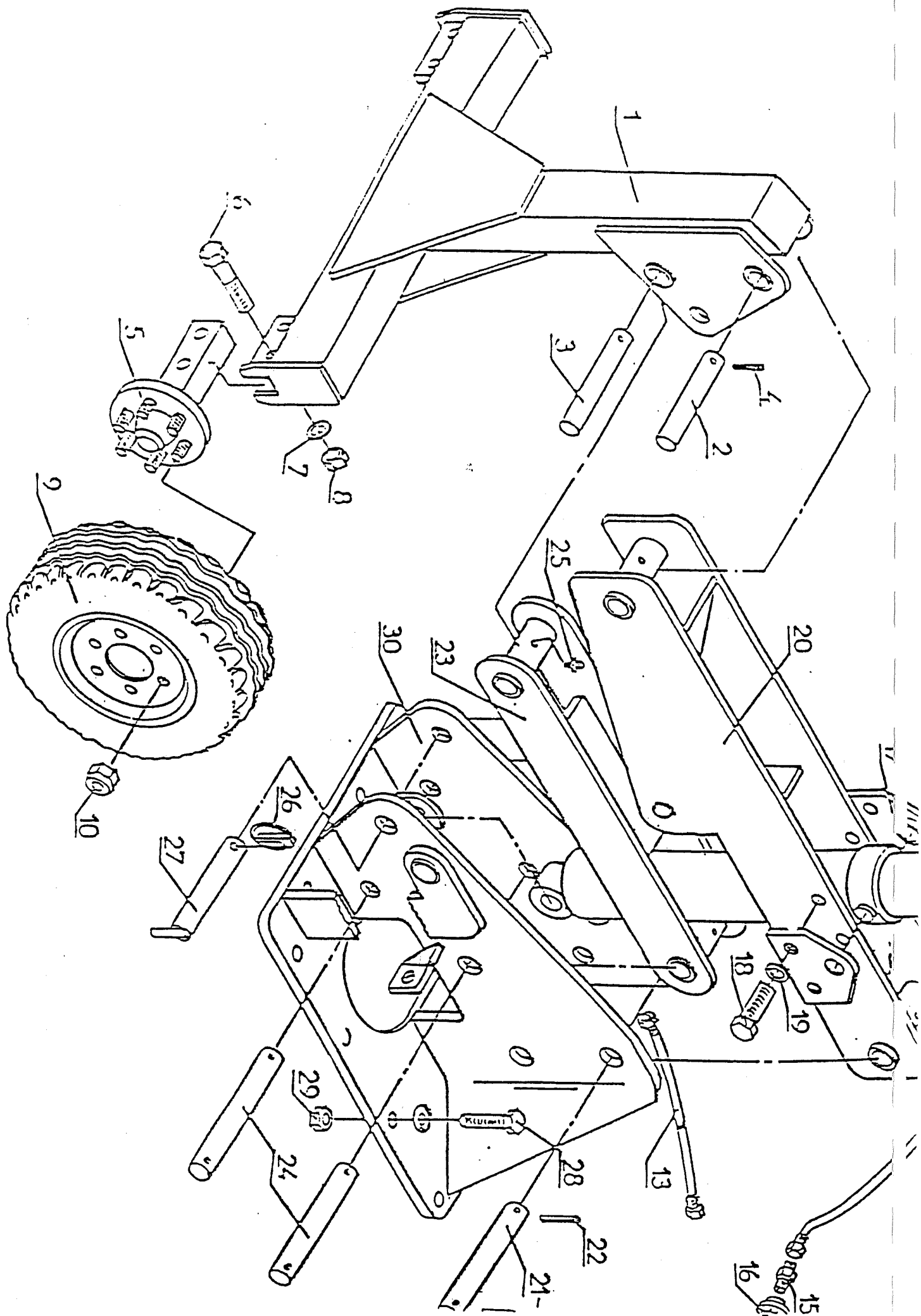
PACKER ROLLER (OPTIONAL)

ITEM	PART NUMBER	DESCRIPTION	QUANTITY		
			3.0m	3.5m	4.0m
281	820891	Packer Roller 3.0m	1		
281	820886	Packer Roller 3.5m		1	
281	820871	Packer Roller 4.0m			1
282	821774	Scraper Bar 3.0m	1		
282	821771	Scraper Bar 3.5m		1	
282	821752	Scraper Bar 4.0m			1
283	821780	Scraper	26	31	35
N/S	821781	Half Scraper RH	1	1	1
N/S	821782	Half Scraper LH	1	1	1
284	820341	Clamp Washer	28	33	37
285	301316455	Setscrew M16(Fine)x45 Lg Grade 8.8	28	33	37
286	307516055	Nyloc Nut M16(Fine)	28	33	37
287	821764	Sideplate RH	1	1	1
N/S	821763	Sideplate LH	1	1	1



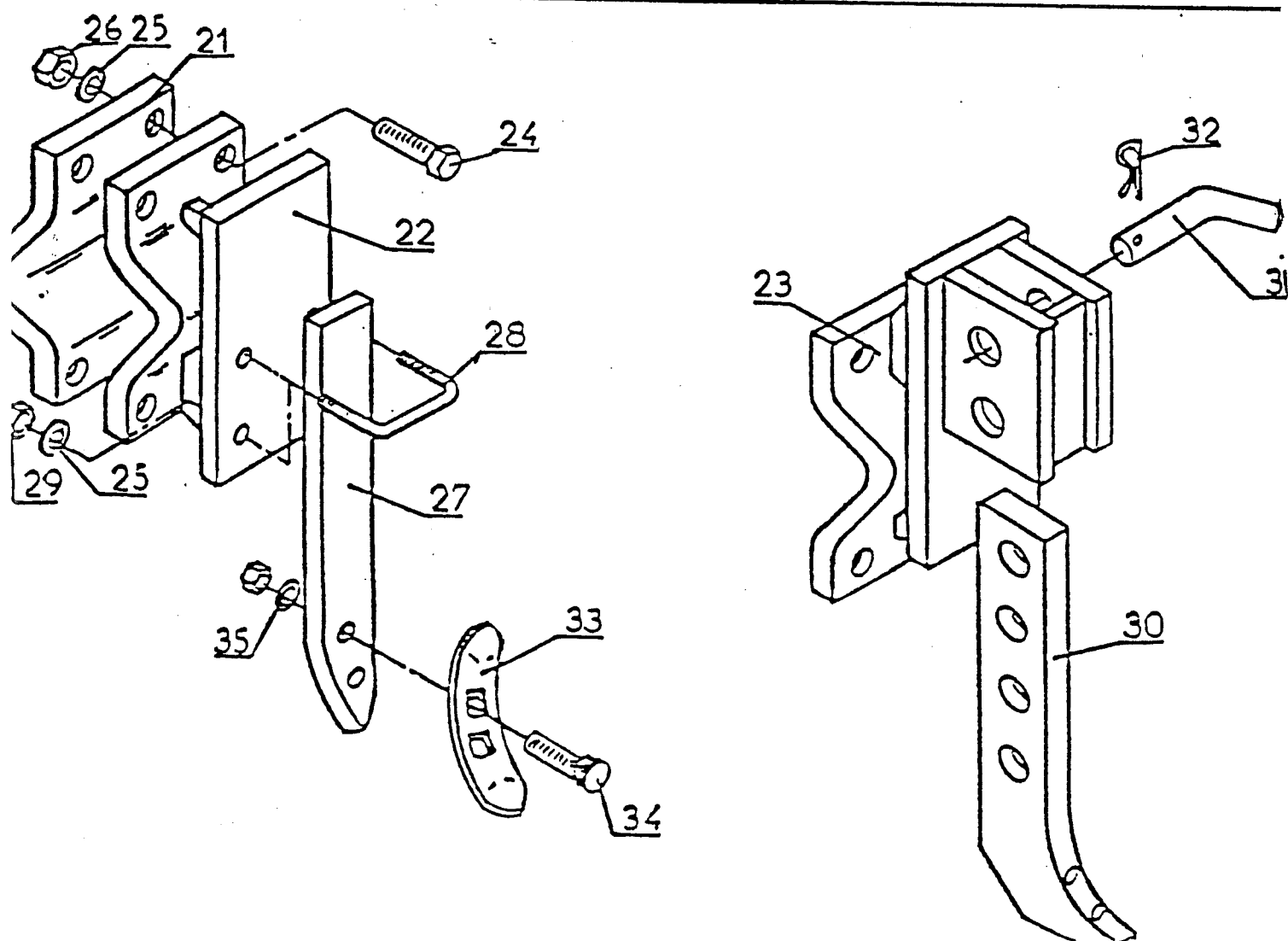
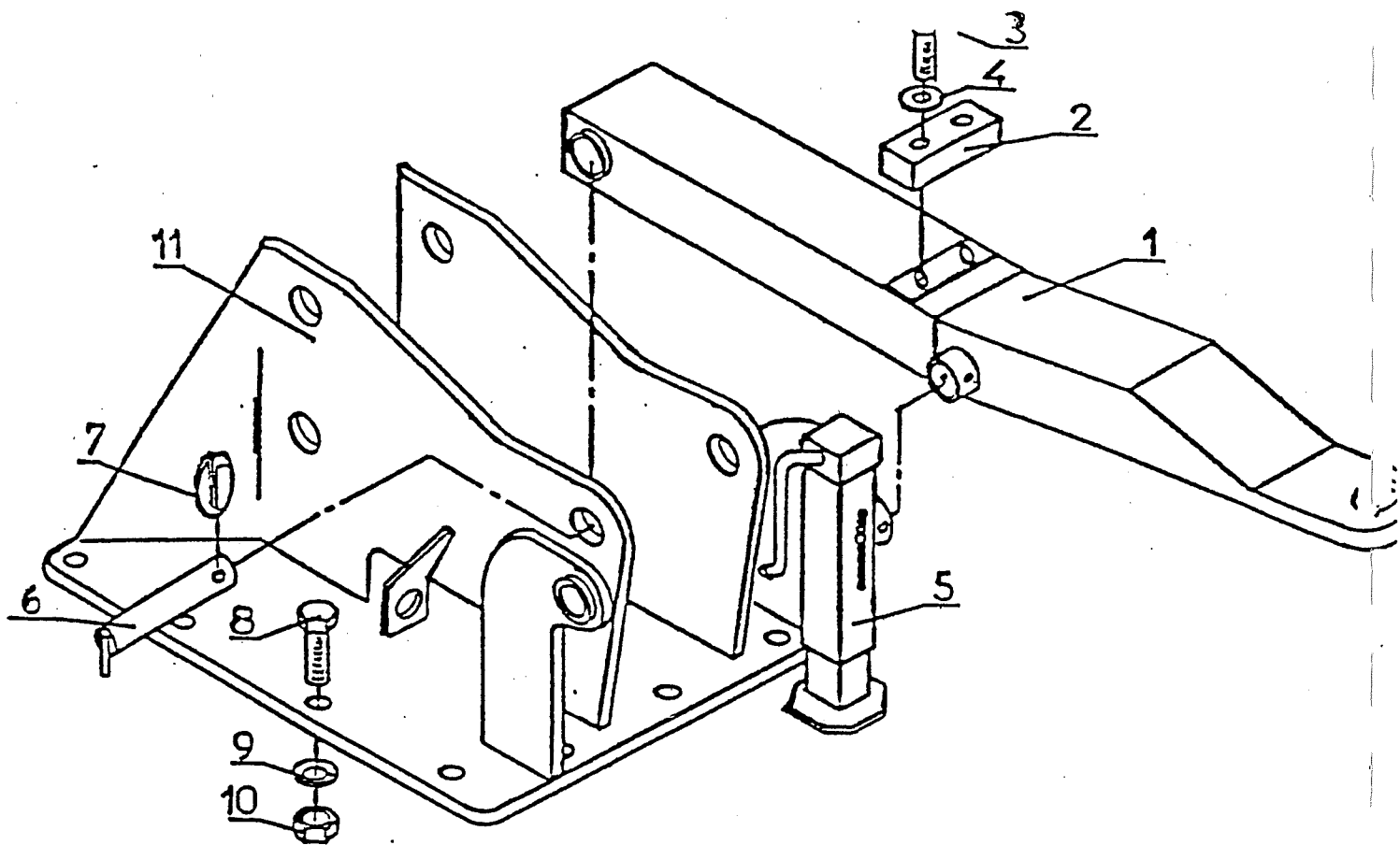
TRANSPORT AXLE LIFT ASSEMBLY (ASSEMBLY No.820981)
(OFFSET OPTIONAL) (ASSEMBLY No.820756)

ITEM	PART NUMBER	DESCRIPTION	QUANTITY
1	820760	Axle Bracket (STD)	1
N/S	820761	Axle Bracket (Offset)	1
2	820780	Top Pivot Pin (Axle)	1
3	820781	Lower Pivot Pin (Axle)	1
4	208086305	Spirol Pin dia 5 (Axle)	2
5	209073290	Stub Axle	2
6	301212905	Hex Head Bolt M12x90 Lg Grade 8.8	4
7	308120045	Spring Washer dia 12	12
8	307212055	Nyloc Nut M12	4
9	209029640	Wheel Assembly	2
	Wheel Assembly Comprises per Wheel		
	209029590	Wheel Rim	1
	209029600	Tyre 6.50 x 10 10 ply	1
	209029610	Tube 6.50 x 10	1
	209029620	Flap	1
10	209029630	Wheel Nut M14 x 1.5	10
11	820855	Hydraulic Ram	1
12	001800	Hose Assembly 108"	1
13	043700	Hose Assembly 132"	1
14	900391	Adaptor 3/8" BSP Male/Female	2
15	202031920	Adaptor 3/8" / 1/2" BSP Male/Female	2
16	202047500	Probe Half Coupling 1/2" BSP	2
17	820857	Ram Lug	2
18	301316305	Setscrew M16(Fine)x30 Lg Grade 8.8	4
19	308160045	Spring Washer M16	4
20	821793	Lift Arm	1
21	821807	Lift Arm Pin	1
22	208086568	Spirol Pin dia 8	6
23	821799	Steady Arm	1
24	821806	Pivot Pin	2
24	821805	Ram Pin	1
25	202030030	Lubricator 1/4" BSP	4
26	208092060	Cup Ring	1
27	820779	Lock Pin	1
28	309112455	Setscrew M12(Fine)x45 Lg Grade 8.8	8
29	307512055	Nyloc Nut M12(Fine)	8
30	820982	Pivot Bracket	1



TRANSPORT AXLE LIFT ASSEMBLY (ASSEMBLY No.820981)
(OFFSET OPTIONAL) (ASSEMBLY No.820756)

ITEM	PART NUMBER	DESCRIPTION	QUANTITY
N/S	301624195	Hex Head Bolt M24x190 Lg Grade 8.8	1
N/S	252023203	Steady Arm Glacior Bush	1
N/S	252528203	Lift Arm Glacior Bush	1
N/S	821804	Tapered Wedge	4

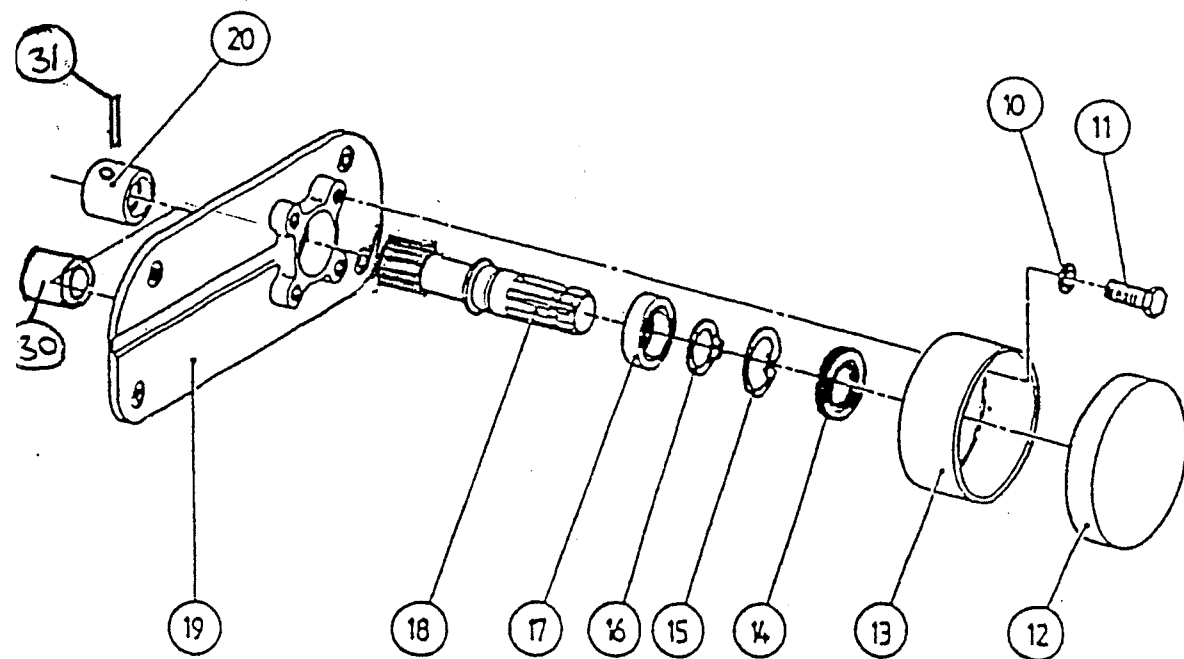
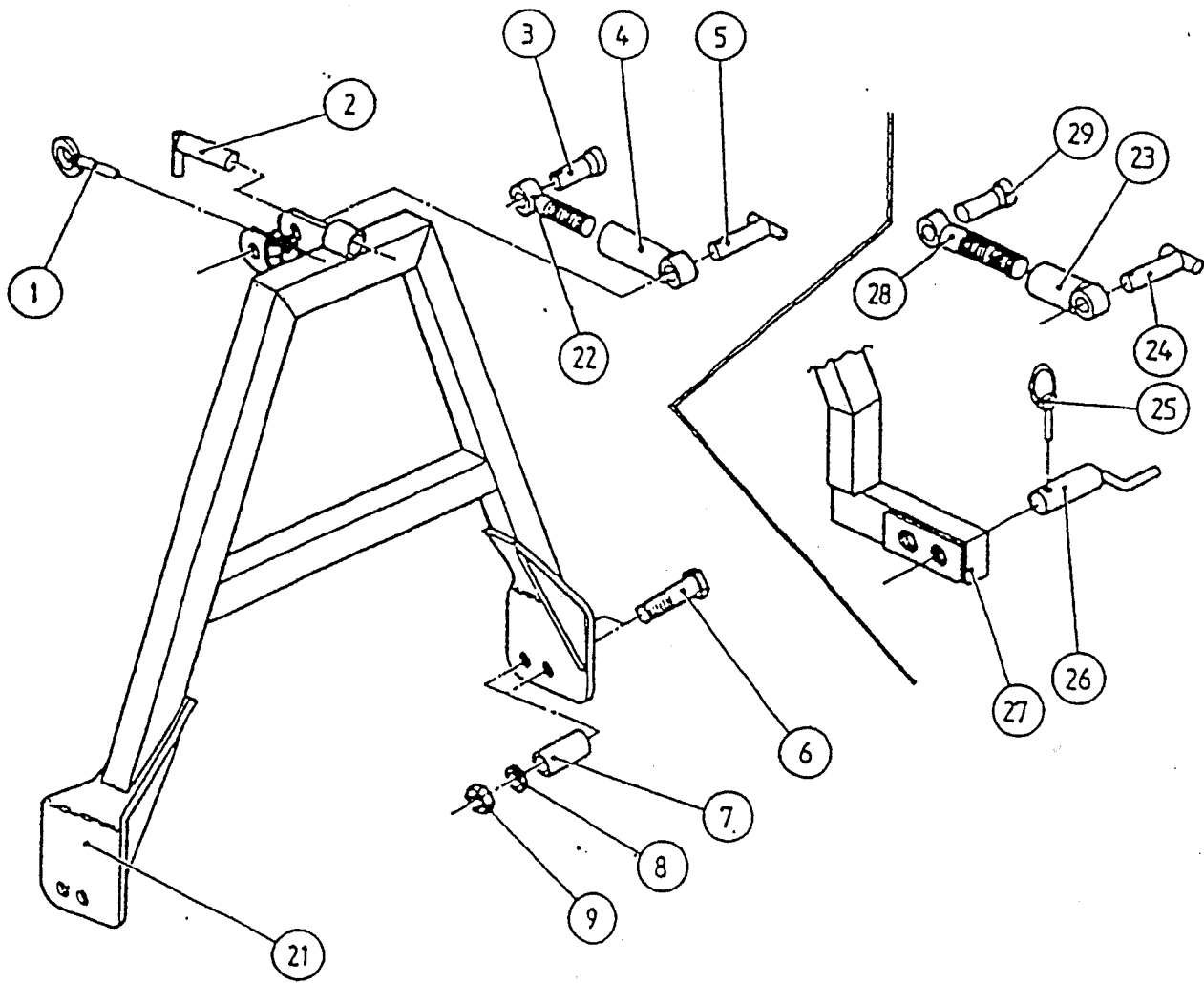


TRANSPORT DRAWBAR (ASSEMBLY No. 820757)
(OFFSET OPTIONAL) (ASSEMBLY No. 820758)

ITEM	PART NUMBER	DESCRIPTION	QUANTITY
1	820762	Drawbar (STD)	1
N/S	820763	Drawbar (Offset)	1
2	901921	Rubber Block	1
3	301412305	Setscrew M12x30 Lg Grade 8.8	2
4	308120015	Flat Washer M12	2
5	820622	Jack Assy	1
6	820799	Locking Pin	2
7	208092060	Clip	1
8	309112455	Setscrew M12(Fine)x45 Lg Grade 8.8	8
9	308120045	Spring Washer M12	8
10	307512055	Nyloc Nut M12(Fine)	8
11	821607	Drawbar Pivot	1
N/S	821639	Boss	2
N/S	301624195	Hex Head Bolt M24x190 Lg Grade 8.8	1

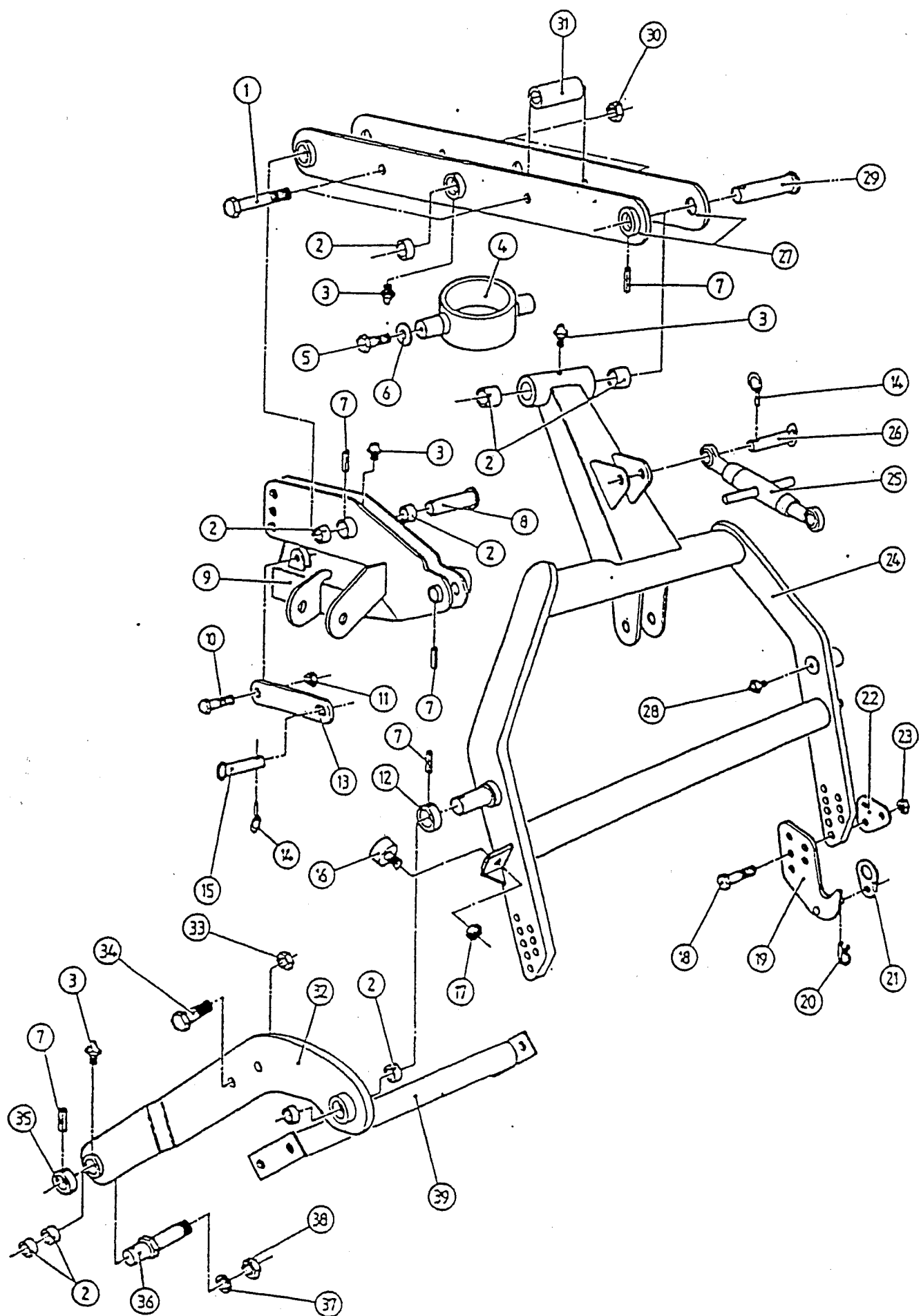
ERADICATOR TINE ASSEMBLY

ITEM	PART NUMBER	DESCRIPTION	QUANTITY	
			STD	HVY DTY
21	820434	Clamp Plate	1	
21	820938	Clamp Plate		1
22	820636	Mounting Bracket	1	
23	820935	Tine Holder		1
24	301112555	Hex Head Bolt M12(Fine)x55 Grade 8.8	4	4
25	308120055	Spring Washer dia 12	8	4
26	307512055	Nyloc Nut M12(Fine)	4	4
27	820649	Tine	1	
28	820024	'U' Bolt	2	
29	307212055	Nyloc Nut M12	4	
30	820902	Tine Leg		1
31	820841	Pin		1
32	208014410	'R' Clip		1
33	820650	Point	1	1
34	208109430	Plough Bolt 7/16" UNF x55Lg Grade 8.8 (Nut Included)	2	2
35	108071245	Spring Washer 7/16"	2	2



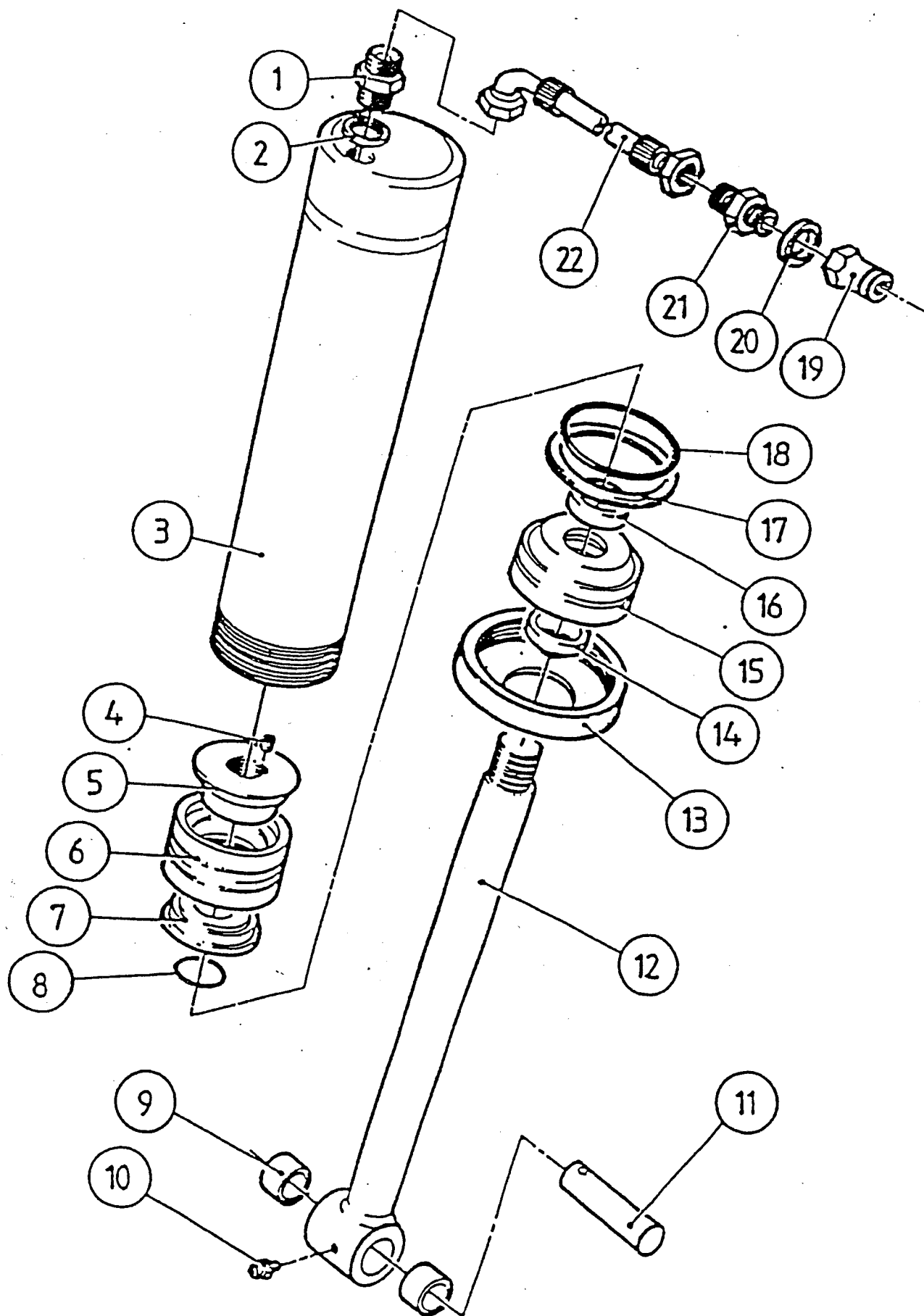
ACCORD DRILL MOUNTING BRACKET & REAR PTO ASSEMBLY

ITEM	PART NUMBER	DESCRIPTION	QUANTITY
1	208092060	Linch Pin	3
2	800562	Locking Pin	1
3	800230	Top Link Pin CAT 2	1
4	821280	Top Link Female	1
5	820452	Top Link Pin	4
6	301520135	Bolt M20(Fine)x130 Lg Grade 8.8	4
7	820555	Sleeve	4
8	308200015	Plain Washer M20	4
9	307520040	Nyloc Nut M20(Fine)	4
10	308120040	Spring Washer M12	4
11	301412200	Setscrew M12 x 30 Lg Grade 8.8	4
12	208044470	Plastic Cover	1
13	800585	Rear PTO Guard	1
14	267235123	Oilseal	1
15	208001310	Internal Circlip	2
16	208002380	External Circlip	1
17	253572171	Bearing	1
18	820951	Rear PTO Shaft	1
19	820942	Pick Off Gear	1
20	820949	Coupler	1
21	821592	Mounting Bracket	1
22	821279	Top Link Male	1
23	821280	Top Link Female	1
24	820452	Top Link Pin	1
25	208086470	Linch Pin	4
27	820193	Mounting Bracket	1
28	820607	Top Link Male	1
29	800230	Top Link Pin CAT 2	1
30	820950	Spacer	1
31	208086470	Spirol Pin	1



HYDRAULIC LINKAGE ASSEMBLY

ITEM	PART NUMBER	DESCRIPTION	QUANTITY
1	301520215	Bolt M20(Fine)x210 Lg Grade 8.8	2
2	900347	Plain Bearing	14
3	900431	Grease Nipple	7
4	820528	Trunion	1
5	301312205	Setscrew M12(Fine)x20 Lg Grade 8.8	2
6	900171	Plain Washer	2
7	900292	Spring Pin 5/16" x 2"	7
8	820573	Top Link Pin	1
9	820532	Top Hitch	1
10	301120655	Bolt M20(Fine)x65 Lg Grade 8.8	1
11	307520055	M20 Nyloc Nut(Fine)	1
12	820205	Collar	2
13	820546	Locking Bar	1
14	900528	Linch Pin	1
15	300000	Transport Locking Pin	1
16	901922	Rubber Stop	2
17	307210055	M10 Nyloc Nut	2
18	301116905	Bolt M16(Fine)x90 Lg Grade 8.8	6
19	820523	Quick Coupler RH	1
19	820520	Quick Coupler LH	1
20	900529	Linch Pin	2
21	820524	Locking Plate	2
22	820525	Lower Link Spacing Plate	6
23	307516055	M16(Fine) Nyloc Nut	6
24	820553	A Frame	1
25	902025	Top Link Assembly	1
26	062500	Top Link Pin	1
27	820526	Top Link Sideplate	2
28	202030110	Grease Nipple	2
29	820573	Top Link Pin	1
30	307520055	M20(Fine) Nyloc Nut	2
31	820547	Spacing Tube	2
32	820540	Lower Link Arm LH	1
32	820541	Lower Link Arm RH	1
33	307520055	M20(Fine) Nyloc Nut	4
34	301120655	Bolt M20(Fine)x65 Lg Grade 8.8	4
35	820205	Collar	2
36	820554	Pivot Pin	2
37	308240015	Plain Washer	2
38	307224055	M24 Nyloc Nut	2
39	820549	Cross Brace	1



HYDRAULIC LINKAGE RAM ASSEMBLY

ITEM	PART NUMBER	DESCRIPTION	QUANTITY
1	900391	Male Adaptor 3/8"-3/8" BSP	1
2	900301	Dowty Washer 3/8" BSP	1
3	1028600	Ram Tube Assembly	1
4	900151	Socket Setscrew 1/4" UNF	1
5	015700	Piston	1
6	900202	Double Acting Seal	1
7	015600	Piston Annulus	1
8	900202	'O' Ring	1
9	900372	Tension Bush	2
10	900431	Grease Nipple	1
11	288700	Ram End Pin	1
12	1028700	Piston Rod Assembly	1
13	049200	End Cap	1
14	900262	Wiper Seal	1
15	900600	Plug	1
16	900222	Single Acting Seal	1
17	900800	Back Up Ring	1
18	900204	'O' Ring	1
19	900611	Quick Coupler	1
20	900302	Dowty Washer 1/2" BSP	1
21	900392	Male Adaptor 3/8"-1/2" BSP	1
22	1040700	Hose Assembly	1
N/S	052700	Ram Seal Set	
N/S	1029500	Ram Assembly	

