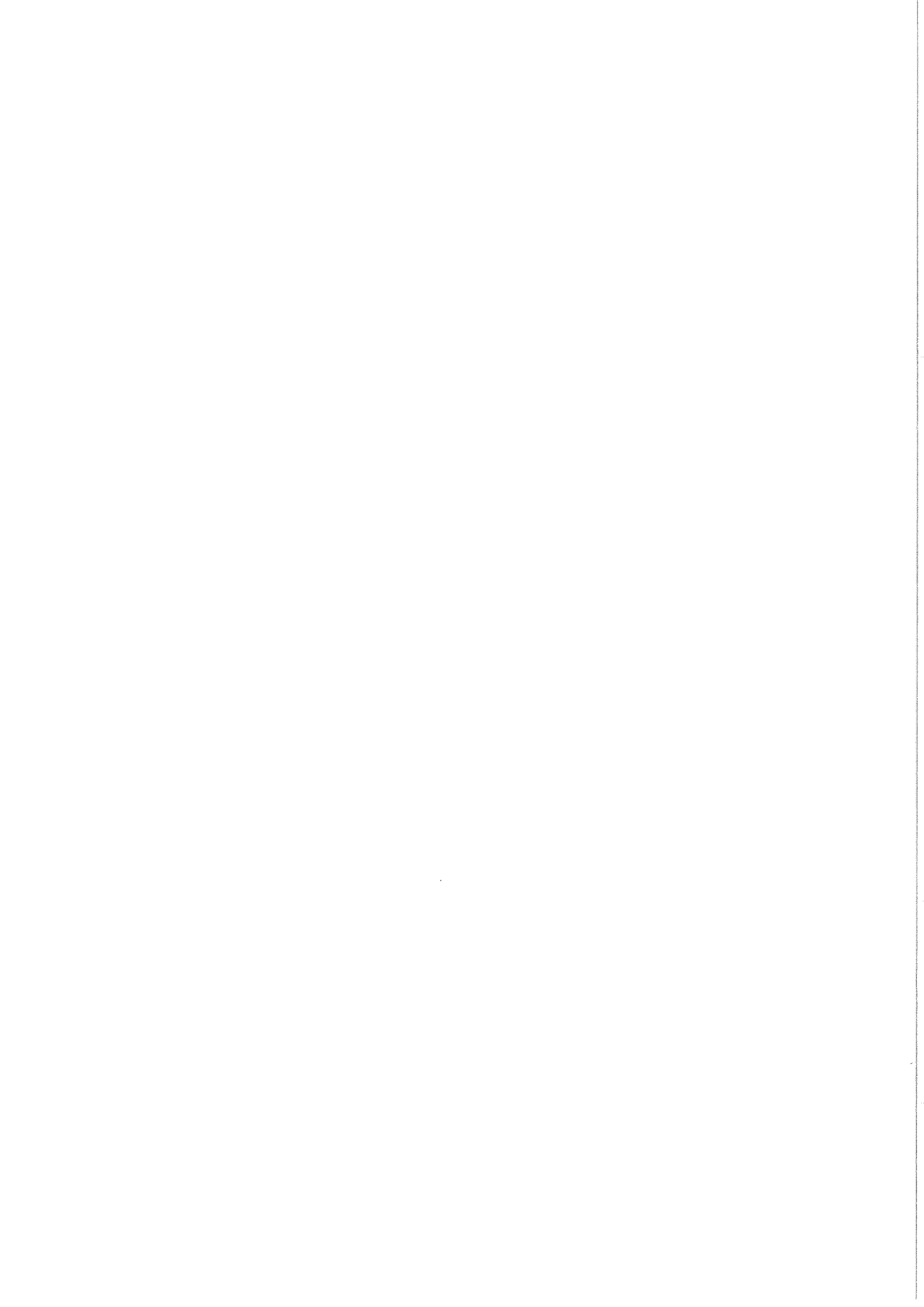


# CONTENTS

## SPARE PARTS

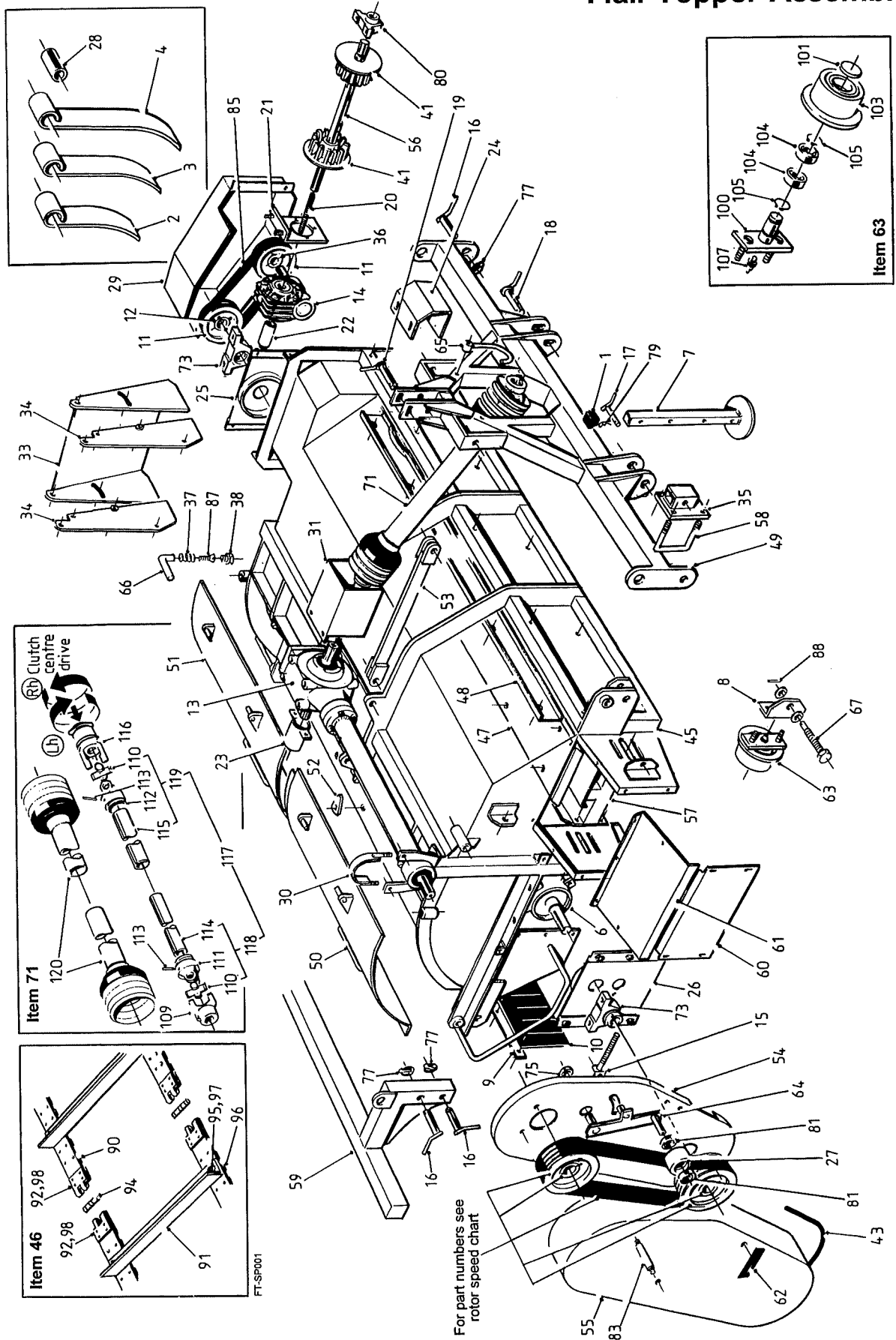
|                                   |     |
|-----------------------------------|-----|
| Flail Topper Assembly             | 2.1 |
| Depth Wheel/Depth Disc Assemblies | 2.2 |
| Gearbox Assembly                  | 2.3 |

**Note:** When using the following pages to order replacement parts, please quote the full serial number of your machine.



Machines from Serial No FT2500

## Flail Topper Assembly



**2.1a****SPARE PARTS**

Machines from Serial No FT2500

**Flail Topper Assembly**

| Item | Part No.   | Description                 | Qty. | Remarks           |
|------|------------|-----------------------------|------|-------------------|
| 1    | 27159      | Plastic Insert (40x40)      | 2    |                   |
| 2    | 27508      | Flail Blade (short)         | a/r  |                   |
| 3    | 27509      | Flail Blade (medium)        | a/r  |                   |
| 4    | 27510      | Flail Blade (long)          | a/r  |                   |
| 5    |            |                             |      |                   |
| 6    | 33010      | Flail Shaft                 | 1    |                   |
| 7    | 33017      | Stand                       | 2    |                   |
| 8    | 50038      | Adjuster Bracket            | 2    |                   |
| 9    | 33029      | Clamp Strip                 | 1    |                   |
| 10   | 33030      | Rubber Flap                 | 1    |                   |
| 11   | 33160      | Pulley 132X2SPA(2012)       | 2    |                   |
| 12   | 33162      | Taperlock Bush (2012/45)    | 1    |                   |
| 13   | 33164      | Gearbox c/w Output Shaft    | 1    |                   |
| 14   | 33181      | Gearbox Assembly            | 1    |                   |
| 15   | 33185      | Jockey Adjuster             | 1    |                   |
| 16   | 33186      | Top Pin (Ø 25mm)            | 6    |                   |
| 17   | 33188      | Locking Pin                 | 2    |                   |
| 18   | 33189      | Bottom Pin (Ø 28mm)         | 2    |                   |
| 19   | 33190      | Locking Pin (115mm)         | 1    |                   |
| 20   | 33191      | Threaded Insert             | 1    |                   |
| 21   | 33192      | Gearbox Mounting Plate      | 1    |                   |
| 22   | 33193      | Adjuster Sleeve             | 1    |                   |
| 23   | 33194      | Cover Tube                  | 1    |                   |
| 24   | 33195      | Guard                       | 1    |                   |
| 25   | 33198      | RH Mounting Panel           | 1    |                   |
| 26   | 33199      | LH Mounting Panel           | 1    |                   |
| 27   | 33202      | Jockey Roller               | 1    |                   |
| 28   | 33207      | Pivot Tube                  | 74   |                   |
| 29   | 33208      | Side Drive Guard            | 1    |                   |
| 30   | 33210      | Gearbox Clamp               | 1    |                   |
| 31   | 33213      | Gearbox Guard               | 1    |                   |
| 32   |            |                             |      |                   |
| 33   | 33270      | Deflector Plate             | 1    |                   |
| 34   | 33271      | Side Plate                  | 2    |                   |
| 35   | 33277      | Stand Bracket               | 2    |                   |
| 36   | 33340      | Taperlock Bush              | 1    |                   |
| 37   | 11289      | Spring                      | 2    |                   |
| 38   | 24383      | 1/2"BSP Blanking Plug       | 2    |                   |
| 39   |            |                             |      |                   |
| 40   |            |                             |      |                   |
| 41   | 37500      | Flanged Web Sprocket        | 2    |                   |
| 42   |            |                             |      |                   |
| 43   | 43227/2670 | Edging Strip (2670mm long)  | 1    |                   |
| 44   |            |                             |      |                   |
| 45   | 50001      | Main Frame                  | 1    |                   |
| 46   | 50002      | Cross Conveyor Web Assembly | 1    | (see list at end) |
| 47   | 50003      | Conveyor Wear Strip         | 1    |                   |
| 48   | 50004      | Conveyor Side Wear Panel    | 1    |                   |
| 49   | 50005      | 3 Point Linkage Frame       | 1    |                   |
| 50   | 50006      | LH Door                     | 1    |                   |
| 51   | 50007      | RH Door                     | 1    |                   |
| 52   | 50008      | Door Clamp                  | 4    |                   |
| 53   | 50009      | 3 Point Linkage Tie Strap   | 2    |                   |
| 54   | 50010      | Main Guard Backplate        | 1    |                   |
| 55   | 50011      | Main Guard                  | 1    |                   |

# SPARE PARTS

2.1b

Machines from Serial No FT2500

## Flail Topper Assembly

| Item | Part No.     | Description                               | Qty. | Remarks           |                           |
|------|--------------|---|------|-------------------|---------------------------|
| 56   | 50012        | Roller Shaft                              | 1    | (see list at end) |                           |
| 57   | 50013        | Cross Conveyor Frame                      | 1    |                   |                           |
| 58   | 50019        | M12 U Bolt (100mm SHS)                    | 2    |                   |                           |
| 59   | 50020        | Depth Wheel Frame                         | 1    |                   |                           |
| 60   | 50031        | Lower Cross Conveyor Guard                | 1    |                   |                           |
| 61   | 50032        | Upper Cross Conveyor Guard                | 1    |                   |                           |
| 62   | 50047        | Guard Handle                              | 2    |                   |                           |
| 63   | 50034        | Roller Assembly                           | 2    |                   |                           |
| 64   | 50035        | Jockey Arm                                | 1    |                   |                           |
| 65   | 50036        | PTO Support Hook                          | 1    |                   |                           |
| 66   | 50041        | Locking Handle                            | 2    |                   |                           |
| 67   | 50037        | Adjuster Bolt                             | 2    |                   |                           |
| 68   |              |   |      |                   |                           |
| 69   |              |   |      |                   |                           |
| 70   |              |   |      |                   |                           |
| 71   | 33288        | 6 Spline PTO Shaft (c/w LH drive clutch)  | 1    |                   | Options (see list at end) |
|      | 33289        | 6 Spline PTO Shaft (c/w RH drive clutch)  | 1    |                   |                           |
|      | 33290        | 21 Spline PTO Shaft (c/w LH drive clutch) | 1    |                   |                           |
|      | 33291        | 21 Spline PTO Shaft (c/w RH drive clutch) | 1    |                   |                           |
| 72   |              |   |      |                   |                           |
| 73   | NP45         | Bearing                                   | 2    |                   |                           |
| 74   |              |   |      |                   |                           |
| 75   | PS488M       | Locking Collar                            | 1    |                   |                           |
| 76   |              |   |      |                   |                           |
| 77   | REK215       | Linch Pin                                 | 10   |                   |                           |
| 78   |              |   |      |                   |                           |
| 79   | S86-82-002   | R'clip                                    | 4    |                   |                           |
| 80   | SL25A        | Bearing                                   | 1    |                   |                           |
| 81   | SLC30        | Bearing                                   | 2    |                   |                           |
| 82   |              |   |      |                   |                           |
| 83   | TBM24M       | Guard Bolt                                | 2    |                   |                           |
| 84   |              |   |      |                   |                           |
| 85   | VB83         | V Belt (SPA 950)                          | 2    |                   |                           |
| 86   |              |   |      |                   |                           |
| 87   | 22013008/040 | M8 Countersunk Setscrew                   | 2    |                   |                           |
| 88   | 22067005/025 | Roll Pin                                  | 2    |                   |                           |
| 89   |              |   |      |                   |                           |
|      |              | <b>Cross Conveyor Web Consists Of:</b>    |      |                   |                           |
| 90   | 50002/1      | Side Belt                                 | 2    |                   |                           |
| 91   | 50002/2      | Scraper Angle                             | 24   |                   |                           |
| 92   | 50002/3      | F'Clip                                    | 4    |                   |                           |
| 93   |              |   |      |                   |                           |
| 94   | 50002/4      | Joining Pin                               | 2    |                   |                           |
| 95   | 44237/13     | M6x20mm Countersunk Screw                 | 96   |                   |                           |
| 96   | 47009N/35/7  | Clamp Plate                               | 48   |                   |                           |
| 97   | 22041006     | M6 Nyloc Nut                              | 96   |                   |                           |
| 98   | KA16047      | Ø5mmx20mm Rivet                           | 96   |                   |                           |
| 99   |              |   |      |                   |                           |

# 2.1c

# SPARE PARTS

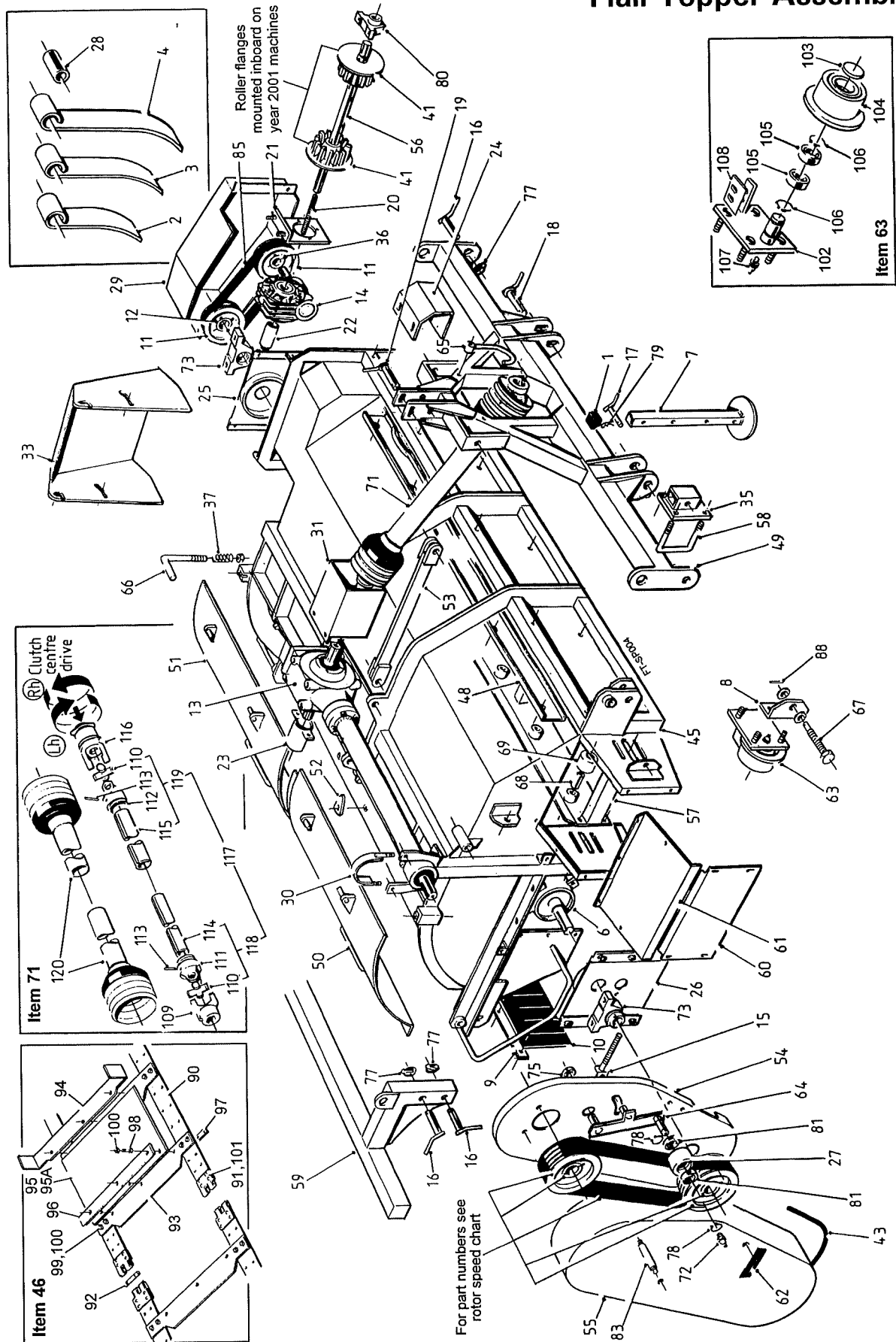
Machines from Serial No FT2500

## Flail Topper Assembly

| Item | Part No.     | Description                                      | Qty. | Remarks               |
|------|--------------|--|------|-----------------------|
|      | <b>50034</b> | <b>Roller Assembly Consists Of:</b>              |      |                       |
| 100  | 50014        | Roller Mounting                                  | 1    |                       |
| 101  | 0000300202   | Dust Cover                                       | 1    |                       |
| 102  |              |  |      |                       |
| 103  | 0150400001   | Flanged Steel Roller                             | 1    |                       |
| 104  | 6006RS       | Bearing  | 2    |                       |
| 105  | RH56         | External Circlip                                 | 2    |                       |
| 106  |              |  |      |                       |
| 107  | GS412        | Grease Nipple                                    | 1    |                       |
| 108  |              |  |      |                       |
|      | <b>33288</b> | <b>6 Spline PTO Shaft (c/w LH drive clutch)</b>  |      |                       |
|      | <b>33289</b> | <b>6 Spline PTO Shaft (c/w RH drive clutch)</b>  |      |                       |
|      | <b>33290</b> | <b>21 Spline PTO Shaft (c/w LH drive clutch)</b> |      |                       |
|      | <b>33291</b> | <b>21 Spline PTO Shaft (c/w RH drive clutch)</b> |      |                       |
|      |              | <b>Consist Of:</b>                               |      |                       |
| 109  | 11557/5      | 6 Spline Yoke                                    | 1    | Assy 33288&33289 only |
|      | 33094/1      | 21 Spline Yoke                                   | 1    | Assy 33290&33291 only |
| 110  | 11557/7      | Unit package                                     | 2    |                       |
| 111  | 11557/9      | Male End Inner Yoke                              | 1    |                       |
| 112  | 11557/10     | Female End Inner Yoke                            | 1    |                       |
| 113  | 11557/11     | Spring Pin                                       | 2    |                       |
| 114  | 33168/1      | Male Lemon Tube                                  | 1    |                       |
| 115  | 33169/1      | Female Lemon Tube                                | 1    |                       |
| 116  | 33170/3      | 6 Spline LH Drive Over-run Clutch                | 1    | Assy 33288&33290 only |
|      | 33171/3      | 6 Spline RH Drive Over-run Clutch                | 1    | Assy 33289&33291 only |
| 117  | 33221        | PTO Shaft (less outboard couplings)              | 1    |                       |
| 118  | 33221A       | Male Coupling Complete                           | 1    |                       |
| 119  | 33221B       | Female Coupling Complete                         | 1    |                       |
| 120  | 33221/1      | Guard Complete                                   | 1    |                       |
| 121  |              |  |      |                       |

Machines from Serial No FT2 528

## Flail Topper Assembly



**2.1a****SPARE PARTS**

Machines from Serial No FT2 528

**Flail Topper Assembly**

| Item | Part No.   | Description                 | Qty. | Remarks           |
|------|------------|-----------------------------|------|-------------------|
| 1    | 27159      | Plastic Insert (40x40)      | 2    |                   |
| 2    | 27508      | Flail Blade (short)         | a/r  |                   |
| 3    | 27509      | Flail Blade (medium)        | a/r  |                   |
| 4    | 27510      | Flail Blade (long)          | a/r  |                   |
| 5    |            |                             |      |                   |
| 6    | 33010      | Flail Shaft                 | 1    |                   |
| 7    | 33017      | Stand                       | 2    |                   |
| 8    | 50038      | Adjuster Bracket            | 2    |                   |
| 9    | 33029      | Clamp Strip                 | 1    |                   |
| 10   | 33030      | Rubber Flap                 | 1    |                   |
| 11   | 33160      | Pulley 132X2SPA(2012)       | 2    |                   |
| 12   | 33162      | Taperlock Bush (2012/45)    | 1    |                   |
| 13   | 33164      | Gearbox c/w Output Shaft    | 1    |                   |
| 14   | 33181      | Gearbox Assembly            | 1    |                   |
| 15   | 33185      | Jockey Adjuster             | 1    |                   |
| 16   | 33186      | Top Pin (Ø 25mm)            | 6    |                   |
| 17   | 33188      | Locking Pin                 | 2    |                   |
| 18   | 33189      | Bottom Pin (Ø 28mm)         | 2    |                   |
| 19   | 33190      | Locking Pin (115mm)         | 1    |                   |
| 20   | 33191      | Threaded Insert             | 1    |                   |
| 21   | 33192      | Gearbox Mounting Plate      | 1    |                   |
| 22   | 33193      | Adjuster Sleeve             | 1    |                   |
| 23   | 33194      | Cover Tube                  | 1    |                   |
| 24   | 33195      | Guard                       | 1    |                   |
| 25   | 33198      | RH Mounting Panel           | 1    |                   |
| 26   | 33199      | LH Mounting Panel           | 1    |                   |
| 27   | 50056      | Jockey Roller               | 1    |                   |
| 28   | 33207      | Pivot Tube                  | 74   |                   |
| 29   | 33208      | Side Drive Guard            | 1    |                   |
| 30   | 33210      | Gearbox Clamp               | 1    |                   |
| 31   | 33213      | Gearbox Guard               | 1    |                   |
| 32   |            |                             |      |                   |
| 33   | 50067      | Deflector Plate             | 1    |                   |
| 34   |            |                             |      |                   |
| 35   | 33277      | Stand Bracket               | 2    |                   |
| 36   | 33340      | Taperlock Bush              | 1    |                   |
| 37   | JK20725    | Spring                      | 2    |                   |
| 38   |            |                             |      |                   |
| 39   |            |                             |      |                   |
| 40   |            |                             |      |                   |
| 41   | 50063      | Flanged Web Sprocket        | 2    |                   |
| 42   |            |                             |      |                   |
| 43   | 43227/2670 | Edging Strip (2670mm long)  | 1    |                   |
| 44   |            |                             |      |                   |
| 45   | 50001      | Main Frame                  | 1    |                   |
| 46   | 50002      | Cross Conveyor Web Assembly | 1    | (see list at end) |
| 47   |            |                             |      |                   |
| 48   | 50004      | Conveyor Side Wear Panel    | 1    |                   |
| 49   | 50005      | 3 Point Linkage Frame       | 1    |                   |
| 50   | 50006      | LH Door                     | 1    |                   |
| 51   | 50007      | RH Door                     | 1    |                   |
| 52   | 50008      | Door Clamp                  | 2    |                   |
| 53   | 50009      | 3 Point Linkage Tie Strap   | 2    |                   |
| 54   | 50010      | Main Guard Backplate        | 1    |                   |
| 55   | 50011      | Main Guard                  | 1    |                   |



# SPARE PARTS

2.1b

Machines from Serial No FT2 528

## Flail Topper Assembly

| Item | Part No.     | Description                               | Qty. | Remarks                   |
|------|--------------|---|------|---------------------------|
| 56   | 50012        | Roller Shaft                              | 1    |                           |
| 57   | 50064        | Cross Conveyor Frame                      | 1    |                           |
| 58   | 50019        | M12 U Bolt (100mm SHS)                    | 2    |                           |
| 59   | 50020        | Depth Wheel Frame                         | 1    |                           |
| 60   | 50078        | Lower Cross Conveyor Guard                | 1    |                           |
| 61   | 50079        | Upper Cross Conveyor Guard                | 1    |                           |
| 62   | 50047        | Guard Handle                              | 2    |                           |
| 63   | 50081        | Roller Assembly                           | 2    | (see list at end)         |
| 64   | 50035        | Jockey Arm                                | 1    |                           |
| 65   | 50036        | PTO Support Hook                          | 1    |                           |
| 66   | 50041        | Locking Handle                            | 2    |                           |
| 67   | 50037        | Adjuster Bolt                             | 2    |                           |
| 68   | 50059        | Roller Spindle                            | 14   |                           |
| 69   | 50060        | Nylon Roller                              | 14   |                           |
| 70   |              |   |      |                           |
| 71   | 33288        | 6 Spline PTO Shaft (c/w LH drive clutch)  | 1    | Options (see list at end) |
|      | 33289        | 6 Spline PTO Shaft (c/w RH drive clutch)  | 1    |                           |
|      | 33290        | 21 Spline PTO Shaft (c/w LH drive clutch) | 1    |                           |
|      | 33291        | 21 Spline PTO Shaft (c/w RH drive clutch) | 1    |                           |
| 72   | GS412        | 1/8" BSP Grease Nipple                    | 1    |                           |
| 73   | NP45         | Bearing                                   | 2    |                           |
| 74   |              |   |      |                           |
| 75   | PS488M       | Locking Collar                            | 1    |                           |
| 76   |              |   |      |                           |
| 77   | REK215       | Linch Pin                                 | 10   |                           |
| 78   | RH56         | External Circlip                          | 2    |                           |
| 79   | S86-82-002   | R'clip                                    | 4    |                           |
| 80   | SL25A        | Bearing                                   | 1    |                           |
| 81   | 6306RS       | Bearing                                   | 2    |                           |
| 82   |              |   |      |                           |
| 83   | TBM24M       | Guard Bolt                                | 2    |                           |
| 84   |              |   |      |                           |
| 85   | VB83         | V Belt (SPA 950)                          | 2    |                           |
| 86   |              |   |      |                           |
| 87   |              |   |      |                           |
| 88   | 22067005/025 | Roll Pin                                  | 2    |                           |
| 89   |              |   |      |                           |
|      | <b>50002</b> | <b>Cross Conveyor Web Consists Of:</b>    |      |                           |
| 90   | 50002/1      | Side Belt                                 | 2    |                           |
| 91   | 50002/3      | F'Clip                                    | 4    |                           |
| 92   | 50002/4      | Joining Pin                               | 2    |                           |
| 93   | 50058        | Mounting Strip                            | 24   |                           |
| 94   | 50065        | Scraper Bracket                           | 2    |                           |
| 95   | 33126/3      | Rubber Flap                               | 23   |                           |
| 95A  | 50002/5      | Long Rubber Flap (for connectors)         | 1    |                           |
| 96   | 33126/4      | Flap Clamp Plate                          | 24   |                           |
| 97   | 47009N/35/7  | Clamp Plate                               | 48   |                           |
| 98   | 22014006/030 | M6x30mm Bolt                              | 72   |                           |

## 2.1c

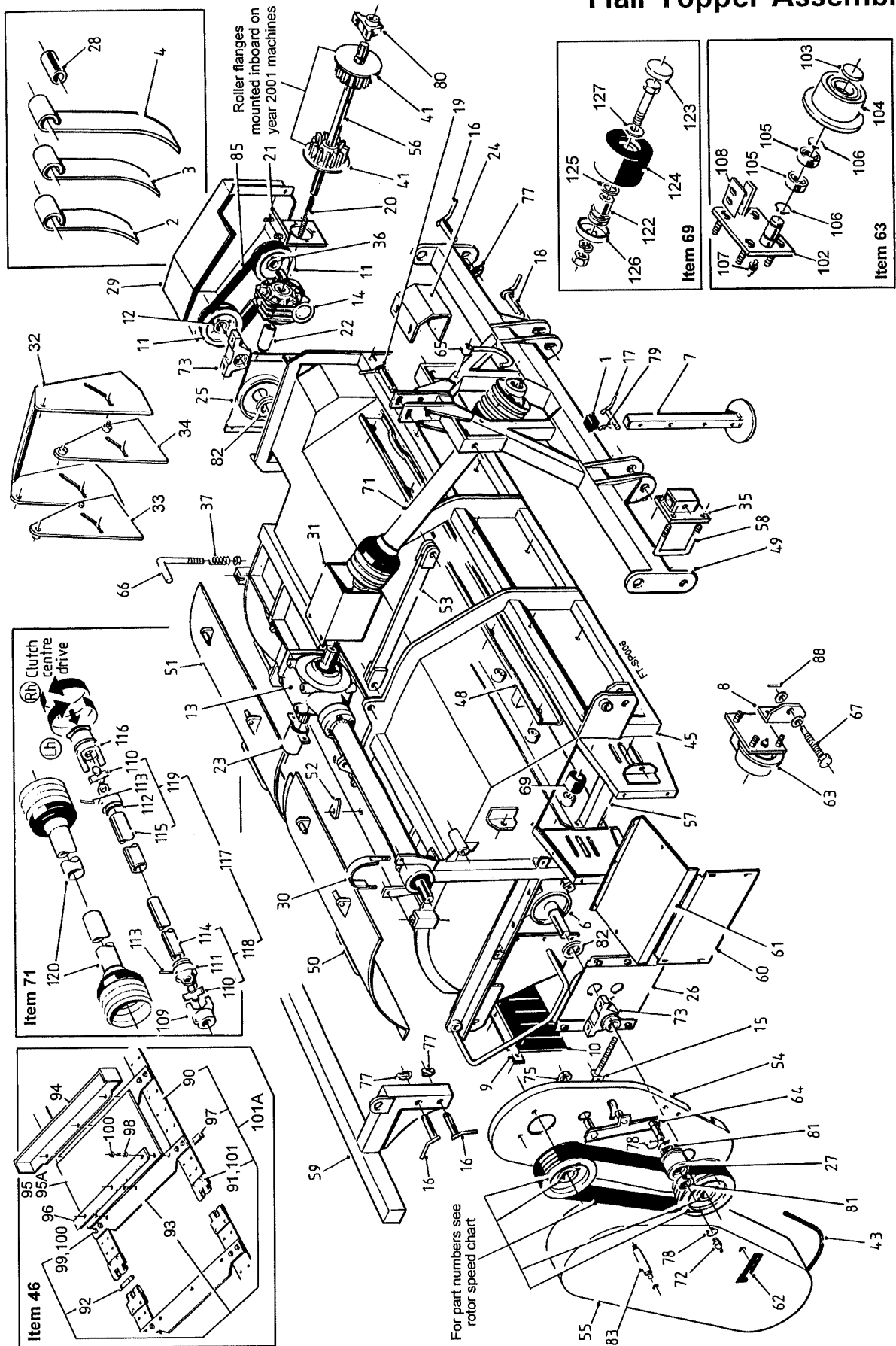
## SPARE PARTS

Machines from Serial No FT2 528

## Flail Topper Assembly

| Item | Part No.     | Description                                      | Qty. | Remarks               |
|------|--------------|--|------|-----------------------|
| 99   | 22016006/025 | M6x25mm Countersunk Screw                        | 96   |                       |
| 100  | 22041006     | M6 Nyloc Nut                                     | 168  |                       |
| 101  | KA16047      | Ø5mmx20mm Rivet                                  | 16   |                       |
|      | <b>50081</b> | <b>Roller Assembly Consists Of:</b>              |      |                       |
| 102  | 50080        | Roller Mounting                                  | 1    |                       |
| 103  | 0000300202   | Dust Cover                                       | 1    |                       |
| 104  | 50040        | Flanged Steel Roller                             | 1    |                       |
| 105  | 6006RS       | Bearing  | 2    |                       |
| 106  | RH56         | External Circlip                                 | 2    |                       |
| 107  | GS412        | 1/8"BSP Grease Nipple                            | 1    |                       |
| 108  | 50066        | Roller Scraper                                   | 1    |                       |
|      | <b>33288</b> | <b>6 Spline PTO Shaft (c/w LH drive clutch)</b>  |      |                       |
|      | <b>33289</b> | <b>6 Spline PTO Shaft (c/w RH drive clutch)</b>  |      |                       |
|      | <b>33290</b> | <b>21 Spline PTO Shaft (c/w LH drive clutch)</b> |      |                       |
|      | <b>33291</b> | <b>21 Spline PTO Shaft (c/w RH drive clutch)</b> |      |                       |
|      |              | <b>Consist Of:</b>                               |      |                       |
| 109  | 11557/5      | 6 Spline Yoke                                    | 1    | Assy 33288&33289 only |
|      | 33094/1      | 21 Spline Yoke                                   | 1    | Assy 33290&33291 only |
| 110  | 11557/7      | Unit package                                     | 2    |                       |
| 111  | 11557/9      | Male End Inner Yoke                              | 1    |                       |
| 112  | 11557/10     | Female End Inner Yoke                            | 1    |                       |
| 113  | 11557/11     | Spring Pin                                       | 2    |                       |
| 114  | 33168/1      | Male Lemon Tube                                  | 1    |                       |
| 115  | 33169/1      | Female Lemon Tube                                | 1    |                       |
| 116  | 33170/3      | 6 Spline LH Drive Over-run Clutch                | 1    | Assy 33288&33290 only |
|      | 33171/3      | 6 Spline RH Drive Over-run Clutch                | 1    | Assy 33289&33291 only |
| 117  | 33221        | PTO Shaft (less outboard couplings)              | 1    |                       |
| 118  | 33221A       | Male Coupling Complete                           | 1    |                       |
| 119  | 33221B       | Female Coupling Complete                         | 1    |                       |
| 120  | 33221/1      | Guard Complete                                   | 1    |                       |
| 121  |              |  |      |                       |

Flail Topper Assembly



## Flail Topper Assembly

| Item | Part No.   | Description                 | Qty. | Remarks           |
|------|------------|-----------------------------|------|-------------------|
| 1    | 27159      | Plastic Insert (40x40)      | 2    |                   |
| 2    | 27508      | Flail Blade (short)         | a/r  |                   |
| 3    | 27509      | Flail Blade (medium)        | a/r  |                   |
| 4    | 27510      | Flail Blade (long)          | a/r  |                   |
| 5    |            |                             |      |                   |
| 6    | 33010      | Flail Shaft                 | 1    |                   |
| 7    | 33017      | Stand                       | 2    |                   |
| 8    | 50038      | Adjuster Bracket            | 2    |                   |
| 9    | 33029      | Clamp Strip                 | 1    |                   |
| 10   | 33030      | Rubber Flap                 | 1    |                   |
| 11   | 33160      | Pulley 132X2SPA(2012)       | 2    |                   |
| 12   | 33162      | Taperlock Bush (2012/45)    | 1    |                   |
| 13   | 33164      | Gearbox c/w Output Shaft    | 1    |                   |
| 14   | 33181      | Gearbox Assembly            | 1    |                   |
| 15   | 33185      | Jockey Adjuster             | 1    |                   |
| 16   | 33186      | Top Pin (Ø 25mm)            | 6    |                   |
| 17   | 33188      | Locking Pin                 | 2    |                   |
| 18   | 33189      | Bottom Pin (Ø 28mm)         | 2    |                   |
| 19   | 33190      | Locking Pin (115mm)         | 1    |                   |
| 20   | 33191      | Threaded Insert             | 1    |                   |
| 21   | 33192      | Gearbox Mounting Plate      | 1    |                   |
| 22   | 33193      | Adjuster Sleeve             | 1    |                   |
| 23   | 33194      | Cover Tube                  | 1    |                   |
| 24   | 33195      | Guard                       | 1    |                   |
| 25   | 33198      | RH Mounting Panel           | 1    |                   |
| 26   | 33199      | LH Mounting Panel           | 1    |                   |
| 27   | 50056      | Jockey Roller               | 1    |                   |
| 28   | 33207      | Pivot Tube                  | 74   |                   |
| 29   | 33208      | Side Drive Guard            | 1    |                   |
| 30   | 33210      | Gearbox Clamp               | 1    |                   |
| 31   | 33213      | Gearbox Guard               | 1    |                   |
| 32   | 50086      | Cross Conveyor Door         | 1    |                   |
| 33   | 50087      | Side Plate Front            | 1    |                   |
| 34   | 50088      | Side Plate Rear             | 1    |                   |
| 35   | 33277      | Stand Bracket               | 2    |                   |
| 36   | 33340      | Taperlock Bush              | 1    |                   |
| 37   | JK20725    | Spring                      | 2    |                   |
| 38   |            |                             |      |                   |
| 39   |            |                             |      |                   |
| 40   |            |                             |      |                   |
| 41   | 50063      | Flanged Web Sprocket        | 2    |                   |
| 42   |            |                             |      |                   |
| 43   | 43227/2670 | Edging Strip (2670mm long)  | 1    |                   |
| 44   |            |                             |      |                   |
| 45   | 50001      | Main Frame                  | 1    |                   |
| 46   | 50002      | Cross Conveyor Web Assembly | 1    | (see list at end) |
| 47   |            |                             |      |                   |
| 48   | 50004      | Conveyor Side Wear Panel    | 1    |                   |
| 49   | 50005      | 3 Point Linkage Frame       | 1    |                   |
| 50   | 50006      | LH Door                     | 1    |                   |
| 51   | 50007      | RH Door                     | 1    |                   |
| 52   | 50008      | Door Clamp                  | 2    |                   |
| 53   | 50009      | 3 Point Linkage Tie Strap   | 2    |                   |
| 54   | 50010      | Main Guard Backplate        | 1    |                   |
| 55   | 50011      | Main Guard                  | 1    |                   |

# SPARE PARTS

2.1b

## Flail Topper Assembly

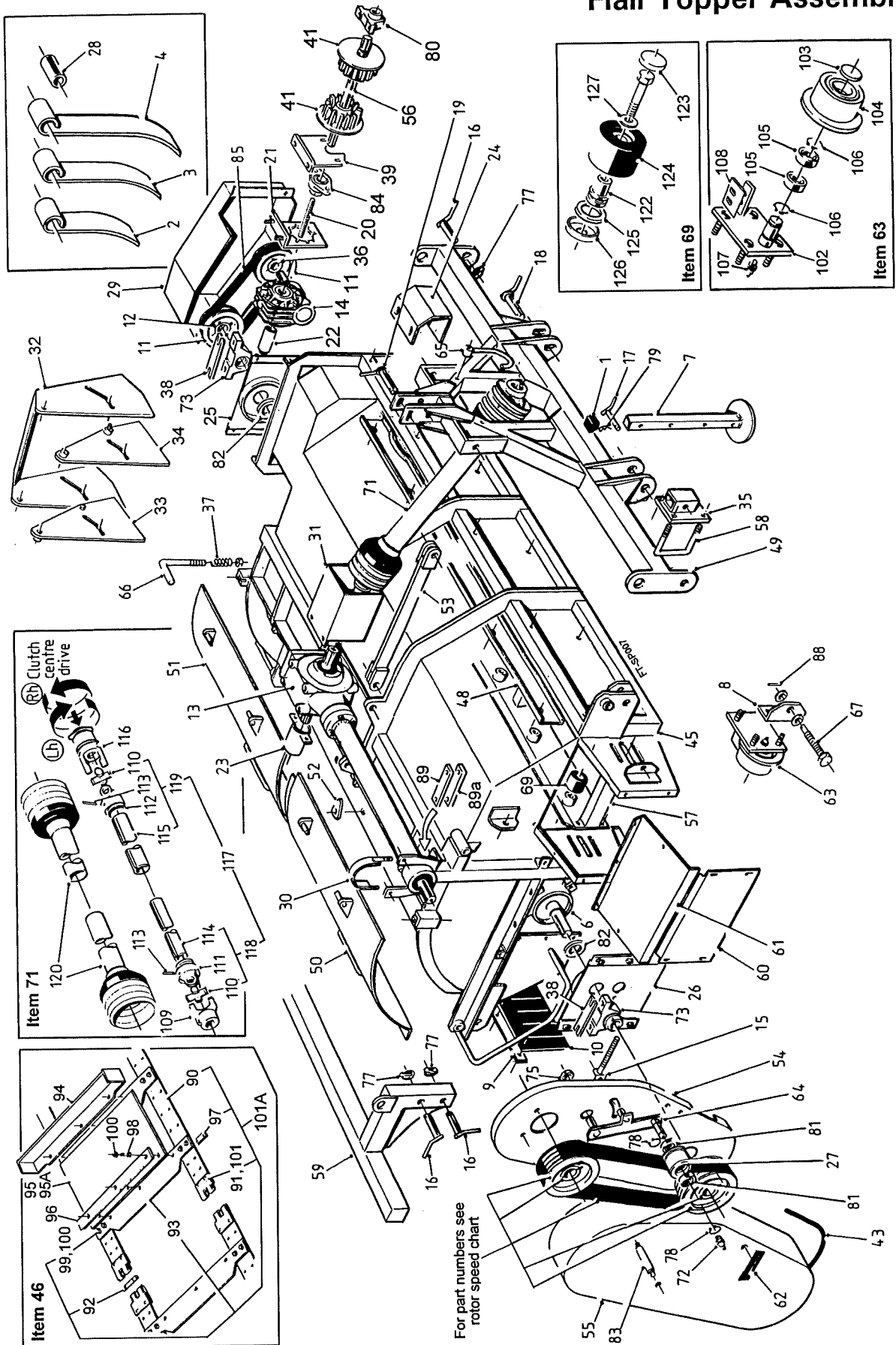
| Item | Part No.     | Description                               | Qty. | Remarks                   |
|------|--------------|---|------|---------------------------|
| 56   | 50012        | Roller Shaft                              | 1    |                           |
| 57   | 50064        | Cross Conveyor Frame                      | 1    |                           |
| 58   | 50019        | M12 U Bolt (100mm SHS)                    | 2    |                           |
| 59   | 50020        | Depth Wheel Frame                         | 1    |                           |
| 60   | 50078        | Lower Cross Conveyor Guard                | 1    |                           |
| 61   | 50079        | Upper Cross Conveyor Guard                | 1    |                           |
| 62   | 50047        | Guard Handle                              | 2    |                           |
| 63   | 50081        | Roller Assembly                           | 2    | (see list at end)         |
| 64   | 50035        | Jockey Arm                                | 1    |                           |
| 65   | 50036        | PTO Support Hook                          | 1    |                           |
| 66   | 50041        | Locking Handle                            | 2    |                           |
| 67   | 50037        | Adjuster Bolt                             | 2    |                           |
| 68   |              |   |      |                           |
| 69   | 50098        | Roller Assembly                           | 14   | (see list at end)         |
| 70   |              |   |      |                           |
| 71   | 33288        | 6 Spline PTO Shaft (c/w LH drive clutch)  | 1    | Options (see list at end) |
|      | 33289        | 6 Spline PTO Shaft (c/w RH drive clutch)  | 1    |                           |
|      | 33290        | 21 Spline PTO Shaft (c/w LH drive clutch) | 1    |                           |
|      | 33291        | 21 Spline PTO Shaft (c/w RH drive clutch) | 1    |                           |
| 72   | GS412        | 1/8"BSP Grease Nipple                     | 1    |                           |
| 73   | NP45         | Bearing                                   | 2    |                           |
| 74   |              |   |      |                           |
| 75   | PS488M       | Locking Collar                            | 1    |                           |
| 76   |              |   |      |                           |
| 77   | REK215       | Linch Pin                                 | 10   |                           |
| 78   | RH56         | External Circlip                          | 2    |                           |
| 79   | S86-82-002   | R'clip                                    | 4    |                           |
| 80   | SL25A        | Bearing                                   | 1    |                           |
| 81   | 6306RS       | Bearing                                   | 2    |                           |
| 82   | SS065046/006 | Steel Spacer                              | 2    |                           |
| 83   | TBM24M       | Guard Bolt                                | 2    |                           |
| 84   |              |   |      |                           |
| 85   | VB83         | V Belt (SPA 950)                          | 2    |                           |
| 86   |              |   |      |                           |
| 87   |              |   |      |                           |
| 88   | 22067005/025 | Roll Pin                                  | 2    |                           |
| 89   |              |   |      |                           |
|      | <b>50002</b> | <b>Cross Conveyor Web Consists Of:</b>    |      |                           |
| 90   | 50002/1      | Side Belt                                 | 2    |                           |
| 91   | 50002/3      | F'Clip (2 holes)                          | 4    |                           |
| 92   | 50002/4      | Joining Pin                               | 2    |                           |
| 93   | 50058        | Mounting Strip                            | 24   |                           |
| 94   | 50065        | Scraper Bracket                           | 2    |                           |
| 95   | 33126/3      | Rubber Flap                               | 23   |                           |
| 95A  | 50002/5      | Long Rubber Flap (for connectors)         | 1    |                           |
| 96   | 33126/4      | Flap Clamp Plate                          | 24   |                           |
| 97   | 50002/6      | Clamp Plate                               | 48   |                           |
| 98   | 22014006/030 | M6x30mm Bolt                              | 72   |                           |

## Flail Topper Assembly

| Item | Part No.      | Description                                      | Qty. | Remarks               |
|------|---------------|--|------|-----------------------|
| 99   | 22016006/020  | M6x25mm Countersunk Screw                        | 96   |                       |
| 100  | 22041006      | M6 Nyloc Nut                                     | 168  |                       |
| 101  | 50002/7       | Rivet  | 8    |                       |
| 101A | 50002X        | Web Assy without Flaps & Brackets                | 1    |                       |
|      | <b>50081</b>  | <b>Roller Assembly Consists Of:</b>              |      |                       |
| 102  | 50080         | Roller Mounting                                  | 1    |                       |
| 103  | 0000300202    | Dust Cover                                       | 1    |                       |
| 104  | 50040         | Flanged Steel Roller                             | 1    |                       |
| 105  | 6006RS        | Bearing  | 2    |                       |
| 106  | RH56          | External Circlip                                 | 2    |                       |
| 107  | GS412         | 1/8"BSP Grease Nipple                            | 1    |                       |
| 108  | 50066         | Roller Scraper                                   | 1    |                       |
|      | <b>33288</b>  | <b>6 Spline PTO Shaft (c/w LH drive clutch)</b>  |      |                       |
|      | <b>33289</b>  | <b>6 Spline PTO Shaft (c/w RH drive clutch)</b>  |      |                       |
|      | <b>33290</b>  | <b>21 Spline PTO Shaft (c/w LH drive clutch)</b> |      |                       |
|      | <b>33291</b>  | <b>21 Spline PTO Shaft (c/w RH drive clutch)</b> |      |                       |
|      |               | <b>Consist Of:</b>                               |      |                       |
| 109  | 11557/5       | 6 Spline Yoke                                    | 1    | Assy 33288&33289 only |
|      | 33094/1       | 21 Spline Yoke                                   | 1    | Assy 33290&33291 only |
| 110  | 11557/7       | Unit package                                     | 2    |                       |
| 111  | 11557/9       | Male End Inner Yoke                              | 1    |                       |
| 112  | 11557/10      | Female End Inner Yoke                            | 1    |                       |
| 113  | 11557/11      | Spring Pin                                       | 2    |                       |
| 114  | 33168/1       | Male Lemon Tube                                  | 1    |                       |
| 115  | 33169/1       | Female Lemon Tube                                | 1    |                       |
| 116  | 33170/3       | 6 Spline LH Drive Over-run Clutch                | 1    | Assy 33288&33290 only |
|      | 33171/3       | 6 Spline RH Drive Over-run Clutch                | 1    | Assy 33289&33291 only |
| 117  | 33221         | PTO Shaft (less outboard couplings)              | 1    |                       |
| 118  | 33221A        | Male Coupling Complete                           | 1    |                       |
| 119  | 33221B        | Female Coupling Complete                         | 1    |                       |
| 120  | 33221/1       | Guard Complete                                   | 1    |                       |
| 121  |               |  |      |                       |
|      | <b>50098</b>  | <b>Roller Assembly Consists Of:</b>              |      |                       |
| 122  | 50099         | Roller Spindle                                   | 1    |                       |
| 123  | RPC620.303070 | End Cap  | 1    |                       |
| 124  | RPC700.300148 | Roller c/w Bearing                               | 1    |                       |
| 125  | RPGM070.00446 | Felt Ring  | 1    |                       |
| 126  | RPGM089.00565 | Roller Shield                                    | 1    |                       |
| 127  | SS032013/002  | Steel Spacer                                     | 1    |                       |

Machines from 2008

## Flail Topper Assembly



## 2.1a

## SPARE PARTS

Machines from 2008

## Flail Topper Assembly

| Item | Part No.     | Description                 | Qty. | Remarks           |
|------|--------------|-----------------------------|------|-------------------|
| 1    | 27159        | Plastic Insert (40x40)      | 2    |                   |
| 2    | 27508        | Flail Blade (short)         | a/r  |                   |
| 3    | 27509        | Flail Blade (medium)        | a/r  |                   |
| 4    | 27510        | Flail Blade (long)          | a/r  |                   |
| 5    |              |                             |      |                   |
| 6    | 33010        | Flail Shaft                 | 1    |                   |
| 7    | 33017        | Stand                       | 2    |                   |
| 8    | 50038        | Adjuster Bracket            | 2    |                   |
| 9    | 33029        | Clamp Strip                 | 1    |                   |
| 10   | 33030        | Rubber Flap                 | 1    |                   |
| 11   | 33160        | Pulley 132X2SPA(2012)       | 2    |                   |
| 12   | 33162        | Taperlock Bush (2012/45)    | 1    |                   |
| 13   | 33164        | Gearbox c/w Output Shaft    | 1    |                   |
| 14   | 33181        | Gearbox Assembly            | 1    |                   |
| 15   | 33185        | Jockey Adjuster             | 1    |                   |
| 16   | 33186        | Top Pin (Ø 25mm)            | 6    |                   |
| 17   | 33188        | Locking Pin                 | 2    |                   |
| 18   | 33189        | Bottom Pin (Ø 28mm)         | 2    |                   |
| 19   | 33190        | Locking Pin (115mm)         | 1    |                   |
| 20   | 22106012/130 | Threaded Insert             | 1    | Was 33191         |
| 21   | 33192        | Gearbox Mounting Plate      | 1    |                   |
| 22   | 33193        | Adjuster Sleeve             | 1    |                   |
| 23   | 33194        | Cover Tube                  | 1    |                   |
| 24   | 33195        | Guard                       | 1    |                   |
| 25   | 33198        | RH Mounting Panel           | 1    |                   |
| 26   | 33199        | LH Mounting Panel           | 1    |                   |
| 27   | 50056        | Jockey Roller               | 1    |                   |
| 28   | 33207        | Pivot Tube                  | 74   |                   |
| 29   | 33208        | Side Drive Guard            | 1    |                   |
| 30   | 33210        | Gearbox Clamp               | 1    |                   |
| 31   | 33213        | Gearbox Guard               | 1    |                   |
| 32   | 50086        | Cross Conveyor Door         | 1    |                   |
| 33   | 50087        | Side Plate Front            | 1    |                   |
| 34   | 50088        | Side Plate Rear             | 1    |                   |
| 35   | 33277        | Stand Bracket               | 2    |                   |
| 36   | 33340        | Taperlock Bush              | 1    |                   |
| 37   | JK20725      | Spring                      | 2    |                   |
| 38   | 50103        | Bearing Packer Plate        | 2    |                   |
| 39   | 50104        | Bearing Support Bracket     | 1    |                   |
| 40   |              |                             |      |                   |
| 41   | 50063        | Flanged Web Sprocket        | 2    |                   |
| 42   |              |                             |      |                   |
| 43   | 43227/2670   | Edging Strip (2670mm long)  | 1    |                   |
| 44   |              |                             |      |                   |
| 45   | 50001        | Main Frame                  | 1    |                   |
| 46   | 50002        | Cross Conveyor Web Assembly | 1    | (see list at end) |
| 47   |              |                             |      |                   |
| 48   | 50004        | Conveyor Side Wear Panel    | 1    |                   |
| 49   | 50005        | 3 Point Linkage Frame       | 1    |                   |
| 50   | 50006        | LH Door                     | 1    |                   |
| 51   | 50007        | RH Door                     | 1    |                   |
| 52   | 50008        | Door Clamp                  | 2    |                   |
| 53   | 50009        | 3 Point Linkage Tie Strap   | 2    |                   |
| 54   | 50010        | Main Guard Backplate        | 1    |                   |
| 55   | 50011        | Main Guard                  | 1    |                   |



# SPARE PARTS

2.1b

Machines from 2008

## Flail Topper Assembly

| Item | Part No.     | Description                               | Qty. | Remarks                   |
|------|--------------|---|------|---------------------------|
| 56   | 50012        | Roller Shaft                              | 1    |                           |
| 57   | 50064        | Cross Conveyor Frame                      | 1    |                           |
| 58   | 50019        | M12 U Bolt (100mm SHS)                    | 4    |                           |
| 59   | 50020        | Depth Wheel Frame                         | 1    |                           |
| 60   | 50078        | Lower Cross Conveyor Guard                | 1    |                           |
| 61   | 50079        | Upper Cross Conveyor Guard                | 1    |                           |
| 62   | 50047        | Guard Handle                              | 2    |                           |
| 63   | 50081        | Roller Assembly                           | 2    | (see list at end)         |
| 64   | 50035        | Jockey Arm                                | 1    |                           |
| 65   | 50036        | PTO Support Hook                          | 1    |                           |
| 66   | 50041        | Locking Handle                            | 2    |                           |
| 67   | 50037        | Adjuster Bolt                             | 2    |                           |
| 68   |              |   |      |                           |
| 69   | 50098        | Roller Assembly                           | 14   | (see list at end)         |
| 70   |              |   |      |                           |
| 71   | 33288        | 6 Spline PTO Shaft (c/w LH drive clutch)  | 1    | Options (see list at end) |
|      | 33289        | 6 Spline PTO Shaft (c/w RH drive clutch)  | 1    |                           |
|      | 33290        | 21 Spline PTO Shaft (c/w LH drive clutch) | 1    |                           |
|      | 33291        | 21 Spline PTO Shaft (c/w RH drive clutch) | 1    |                           |
| 72   | GS412        | 1/8" BSP Grease Nipple                    | 1    |                           |
| 73   | NP45         | Bearing                                   | 2    |                           |
| 74   |              |   |      |                           |
| 75   | PS488M       | Locking Collar                            | 1    |                           |
| 76   |              |   |      |                           |
| 77   | REK215       | Linch Pin                                 | 10   |                           |
| 78   | RH56         | External Circlip                          | 2    |                           |
| 79   | S86-82-002   | R'clip                                    | 4    |                           |
| 80   | SL25A        | Bearing                                   | 1    |                           |
| 81   | 6306RS       | Bearing                                   | 2    |                           |
| 82   | SS065046/006 | Steel Spacer                              | 2    |                           |
| 83   | TBM24M       | Guard Bolt                                | 2    |                           |
| 84   | SFT25        | Bearing                                   | 1    |                           |
| 85   | VB83         | V Belt (SPA 950)                          | 2    |                           |
| 86   |              |   |      |                           |
| 87   |              |   |      |                           |
| 88   | 22067005/025 | Roll Pin                                  | 2    |                           |
| 89   | 50117/8      | Packer Plate (8mm)                        | 1    |                           |
| 89a  | 50117/10     | Packer Plate (10mm)                       | 1    |                           |
|      |              |   |      |                           |
|      | <b>50002</b> | <b>Cross Conveyor Web Consists Of:</b>    |      |                           |
| 90   | 50002/1      | Side Belt                                 | 2    |                           |
| 91   | 50002/3      | F'Clip (2 holes)                          | 4    |                           |
| 92   | 50002/4      | Joining Pin                               | 2    |                           |
| 93   | 50058        | Mounting Strip                            | 24   |                           |
| 94   | 50065        | Scraper Bracket                           | 2    |                           |
| 95   | 33126/3      | Rubber Flap                               | 23   |                           |
| 95A  | 50002/5      | Long Rubber Flap (for connectors)         | 1    |                           |
| 96   | 33126/4      | Flap Clamp Plate                          | 24   |                           |
| 97   | 50002/6      | Clamp Plate                               | 48   |                           |
| 98   | 22014006/030 | M6x30mm Bolt                              | 72   |                           |

## 2.1c

## SPARE PARTS

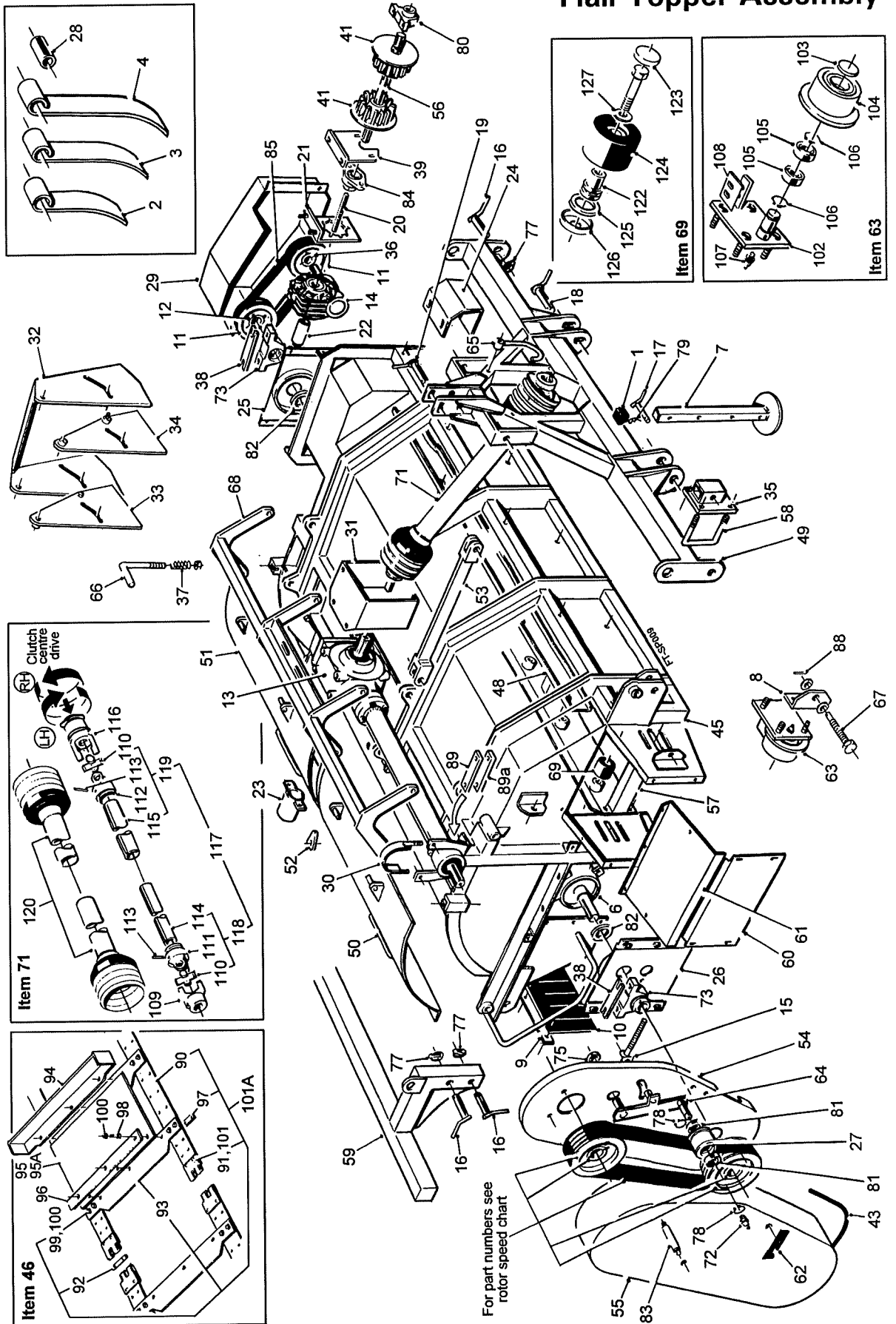
Machines from 2008

## Flail Topper Assembly

| Item | Part No.      | Description                                      | Qty. | Remarks               |
|------|---------------|--|------|-----------------------|
| 99   | 22016006/020  | M6x25mm Countersunk Screw                        | 96   |                       |
| 100  | 22041006      | M6 Nyloc Nut                                     | 168  |                       |
| 101  | 50002/7       | Rivet  | 8    |                       |
| 101A | 50002X        | Web Assy without Flaps & Brackets                | 1    |                       |
|      | <b>50081</b>  | <b>Roller Assembly Consists Of:</b>              |      |                       |
| 102  | 50080         | Roller Mounting                                  | 1    |                       |
| 103  | 0000300202    | Dust Cover                                       | 1    |                       |
| 104  | 50040         | Flanged Steel Roller                             | 1    |                       |
| 105  | 6006RS        | Bearing  | 2    |                       |
| 106  | RH56          | External Circlip                                 | 2    |                       |
| 107  | GS412         | 1/8" BSP Grease Nipple                           | 1    |                       |
| 108  | 50066         | Roller Scraper                                   | 1    |                       |
|      | <b>33288</b>  | <b>6 Spline PTO Shaft (c/w LH drive clutch)</b>  |      |                       |
|      | <b>33289</b>  | <b>6 Spline PTO Shaft (c/w RH drive clutch)</b>  |      |                       |
|      | <b>33290</b>  | <b>21 Spline PTO Shaft (c/w LH drive clutch)</b> |      |                       |
|      | <b>33291</b>  | <b>21 Spline PTO Shaft (c/w RH drive clutch)</b> |      |                       |
|      |               | <b>Consist Of:</b>                               |      |                       |
| 109  | 11557/5       | 6 Spline Yoke                                    | 1    | Assy 33288&33289 only |
|      | 33094/1       | 21 Spline Yoke                                   | 1    | Assy 33290&33291 only |
| 110  | 11557/7       | Unit package                                     | 2    |                       |
| 111  | 11557/9       | Male End Inner Yoke                              | 1    |                       |
| 112  | 11557/10      | Female End Inner Yoke                            | 1    |                       |
| 113  | 11557/11      | Spring Pin                                       | 2    |                       |
| 114  | 33168/1       | Male Lemon Tube                                  | 1    |                       |
| 115  | 33169/1       | Female Lemon Tube                                | 1    |                       |
| 116  | 33170/3       | 6 Spline LH Drive Over-run Clutch                | 1    | Assy 33288&33290 only |
|      | 33171/3       | 6 Spline RH Drive Over-run Clutch                | 1    | Assy 33289&33291 only |
| 117  | 33221         | PTO Shaft (less outboard couplings)              | 1    |                       |
| 118  | 33221A        | Male Coupling Complete                           | 1    |                       |
| 119  | 33221B        | Female Coupling Complete                         | 1    |                       |
| 120  | 33221/1       | Guard Complete                                   | 1    |                       |
| 121  |               |  |      |                       |
|      | <b>50098</b>  | <b>Roller Assembly Consists Of:</b>              |      |                       |
| 122  | 50099         | Roller Spindle                                   | 1    |                       |
| 123  | RPC620.303070 | End Cap  | 1    |                       |
| 124  | RPC700.300148 | Roller c/w Bearing                               | 1    |                       |
| 125  | RPGM070.00446 | Felt Ring  | 1    |                       |
| 126  | RPGM089.00565 | Roller Shield                                    | 1    |                       |
| 127  | 22046012C     | M12 Flat Washer (2.5mm thick)                    | 1    |                       |

Machines from 2020

## Flail Topper Assembly



## 2.1a

## SPARE PARTS

Machines from 2020

## Flail Topper Assembly

| Item | Part No.     | Description                 | Qty. | Remarks           |
|------|--------------|-----------------------------|------|-------------------|
| 1    | 27159        | Plastic Insert (40x40)      | 2    |                   |
| 2    | 27508        | Flail Blade (short)         | a/r  |                   |
| 3    | 27509        | Flail Blade (medium)        | a/r  |                   |
| 4    | 27510        | Flail Blade (long)          | a/r  |                   |
| 5    |              |                             |      |                   |
| 6    | 33010        | Flail Shaft                 | 1    |                   |
| 7    | 33017        | Stand                       | 2    |                   |
| 8    | 50038        | Adjuster Bracket            | 2    |                   |
| 9    | 33029        | Clamp Strip                 | 1    |                   |
| 10   | 33030        | Rubber Flap                 | 1    |                   |
| 11   | 33160        | Pulley 132X2SPA(2012)       | 2    |                   |
| 12   | 33162        | Taperlock Bush (2012/45)    | 1    |                   |
| 13   | 33164        | Gearbox c/w Output Shaft    | 1    |                   |
| 14   | 33181        | Gearbox Assembly            | 1    |                   |
| 15   | 33185        | Jockey Adjuster             | 1    |                   |
| 16   | 33186        | Top Pin (Ø 25mm)            | 6    |                   |
| 17   | 33188        | Locking Pin                 | 2    |                   |
| 18   | 33189        | Bottom Pin (Ø 28mm)         | 2    |                   |
| 19   | 33190        | Locking Pin (115mm)         | 1    |                   |
| 20   | 22106012/130 | Threaded Insert             | 1    | Was 33191         |
| 21   | 33192        | Gearbox Mounting Plate      | 1    |                   |
| 22   | 33193        | Adjuster Sleeve             | 1    |                   |
| 23   | 33194        | Cover Tube                  | 1    |                   |
| 24   | 33195        | Guard                       | 1    |                   |
| 25   | 33198        | RH Mounting Panel           | 1    |                   |
| 26   | 33199        | LH Mounting Panel           | 1    |                   |
| 27   | 50056        | Jockey Roller               | 1    |                   |
| 28   | 33207        | Pivot Tube                  | 74   |                   |
| 29   | 33208        | Side Drive Guard            | 1    |                   |
| 30   | 33210        | Gearbox Clamp               | 1    |                   |
| 31   | 33213A       | Gearbox Guard               | 1    |                   |
| 32   | 50086        | Cross Conveyor Door         | 1    |                   |
| 33   | 50087        | Side Plate Front            | 1    |                   |
| 34   | 50088        | Side Plate Rear             | 1    |                   |
| 35   | 33277        | Stand Bracket               | 2    |                   |
| 36   | 33340        | Taperlock Bush              | 1    |                   |
| 37   | JK20725      | Spring                      | 2    |                   |
| 38   | 50103        | Bearing Packer Plate        | 2    |                   |
| 39   | 50104        | Bearing Support Bracket     | 1    |                   |
| 40   |              |                             |      |                   |
| 41   | 50063        | Flanged Web Sprocket        | 2    |                   |
| 42   |              |                             |      |                   |
| 43   | 43227/2670   | Edging Strip (2670mm long)  | 1    |                   |
| 44   |              |                             |      |                   |
| 45   | 50001A       | Main Frame                  | 1    |                   |
| 46   | 50002        | Cross Conveyor Web Assembly | 1    | (see list at end) |
| 47   |              |                             |      |                   |
| 48   | 50004        | Conveyor Side Wear Panel    | 1    |                   |
| 49   | 50005        | 3 Point Linkage Frame       | 1    |                   |
| 50   | 50006        | LH Door                     | 1    |                   |
| 51   | 50007        | RH Door                     | 1    |                   |
| 52   | 50008        | Door Clamp                  | 2    |                   |
| 53   | 50009A       | 3 Point Linkage Tie Strap   | 2    |                   |
| 54   | 50010        | Main Guard Backplate        | 1    |                   |
| 55   | 50011        | Main Guard                  | 1    |                   |

# SPARE PARTS

2.1b

Machines from 2020

## Flail Topper Assembly

| Item | Part No.     | Description                               | Qty. | Remarks                   |
|------|--------------|---|------|---------------------------|
| 56   | 50012        | Roller Shaft                              | 1    |                           |
| 57   | 50064        | Cross Conveyor Frame                      | 1    |                           |
| 58   | 50019        | M12 U Bolt (100mm SHS)                    | 4    |                           |
| 59   | 50020        | Depth Wheel Frame                         | 1    |                           |
| 60   | 50078        | Lower Cross Conveyor Guard                | 1    |                           |
| 61   | 50079        | Upper Cross Conveyor Guard                | 1    |                           |
| 62   | 50047        | Guard Handle                              | 2    |                           |
| 63   | 50081        | Roller Assembly                           | 2    | (see list at end)         |
| 64   | 50035        | Jockey Arm                                | 1    |                           |
| 65   | 50036        | PTO Support Hook                          | 1    |                           |
| 66   | 50041        | Locking Handle                            | 2    |                           |
| 67   | 50037        | Adjuster Bolt                             | 2    |                           |
| 68   | 50109        | Gearbox Brace                             | 1    |                           |
| 69   | 50098        | Roller Assembly                           | 14   | (see list at end)         |
| 70   |              |   |      |                           |
| 71   | 33288        | 6 Spline PTO Shaft (c/w LH drive clutch)  | 1    | Options (see list at end) |
|      | 33289        | 6 Spline PTO Shaft (c/w RH drive clutch)  | 1    |                           |
|      | 33290        | 21 Spline PTO Shaft (c/w LH drive clutch) | 1    |                           |
|      | 33291        | 21 Spline PTO Shaft (c/w RH drive clutch) | 1    |                           |
| 72   | GS412        | 1/8" BSP Grease Nipple                    | 1    |                           |
| 73   | NP45         | Bearing                                   | 2    |                           |
| 74   |              |   |      |                           |
| 75   | PS488M       | Locking Collar                            | 1    |                           |
| 76   |              |   |      |                           |
| 77   | REK215       | Linch Pin                                 | 10   |                           |
| 78   | RH56         | External Circlip                          | 2    |                           |
| 79   | S86-82-002   | R'clip                                    | 4    |                           |
| 80   | SL25A        | Bearing                                   | 1    |                           |
| 81   | 6306RS       | Bearing                                   | 2    |                           |
| 82   | SS065046/006 | Steel Spacer                              | 2    |                           |
| 83   | TBM24M       | Guard Bolt                                | 2    |                           |
| 84   | SFT25        | Bearing                                   | 1    |                           |
| 85   | VB104        | V Belt (932mm)                            | 2    |                           |
| 86   |              |   |      |                           |
| 87   |              |   |      |                           |
| 88   | 22067005/025 | Roll Pin                                  | 2    |                           |
| 89   | 50117/8      | Packer Plate (8mm)                        | 1    |                           |
| 89a  | 50117/10     | Packer Plate (10mm)                       | 1    |                           |
|      |              |   |      |                           |
|      | <b>50002</b> | <b>Cross Conveyor Web Consists Of:</b>    |      |                           |
| 90   | 50002/1      | Side Belt                                 | 2    |                           |
| 91   | 50002/3      | F'Clip (2 holes)                          | 4    |                           |
| 92   | 50002/4      | Joining Pin                               | 2    |                           |
| 93   | 50058        | Mounting Strip                            | 24   |                           |
| 94   | 50065        | Scraper Bracket                           | 2    |                           |
| 95   | 33126/3      | Rubber Flap                               | 23   |                           |
| 95A  | 50002/5      | Long Rubber Flap (for connectors)         | 1    |                           |
| 96   | 33126/4      | Flap Clamp Plate                          | 24   |                           |
| 97   | 50002/6      | Clamp Plate                               | 48   |                           |
| 98   | 22014006/030 | M6x30mm Bolt                              | 72   |                           |

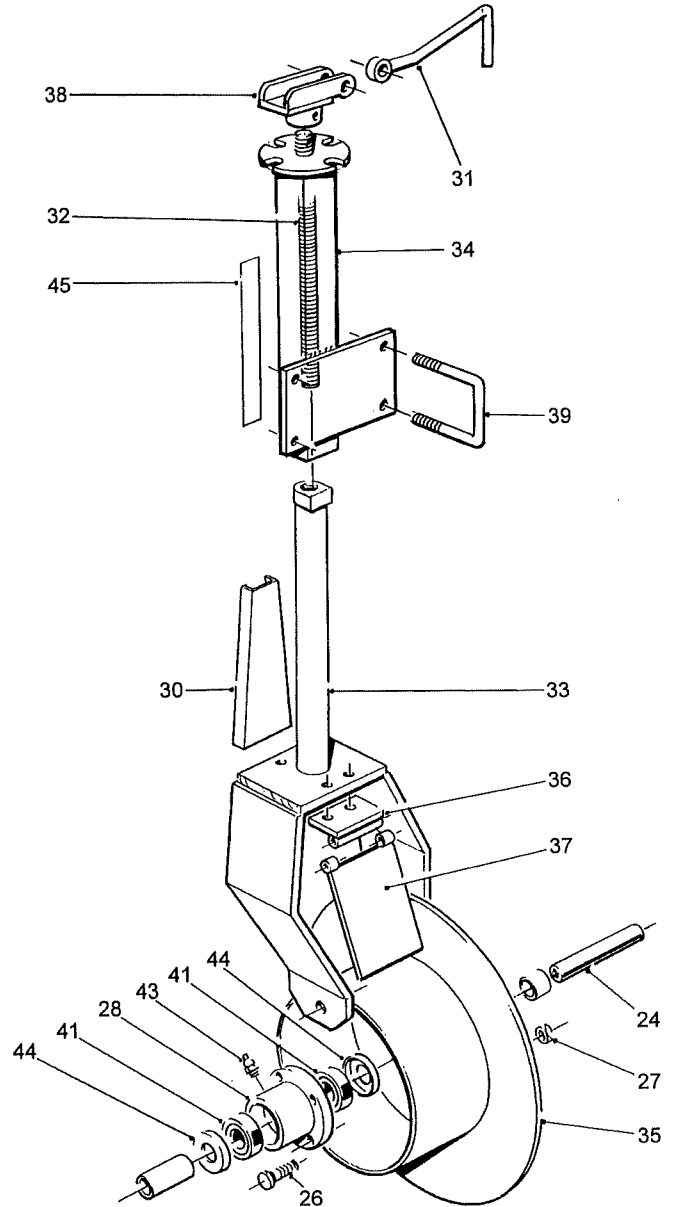
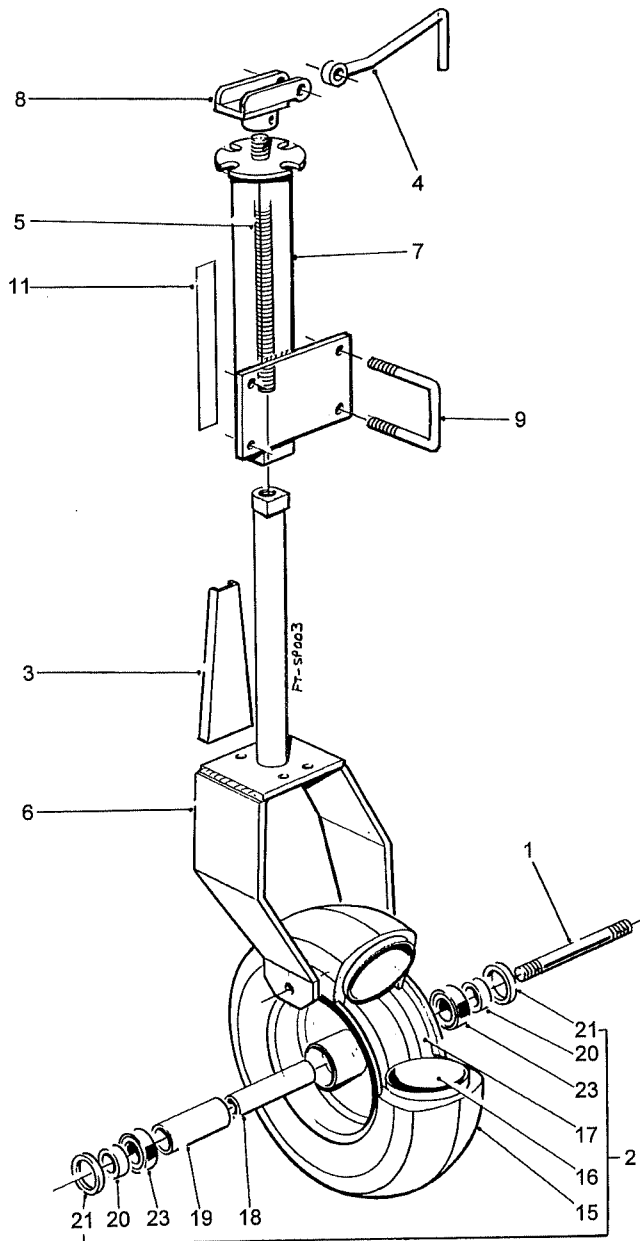
Machines from 2020

## Flail Topper Assembly

| Item | Part No.      | Description                                      | Qty. | Remarks               |
|------|---------------|--|------|-----------------------|
| 99   | 22016006/020  | M6x25mm Countersunk Screw                        | 96   |                       |
| 100  | 22041006      | M6 Nyloc Nut                                     | 168  |                       |
| 101  | 50002/7       | Rivet  | 8    |                       |
| 101A | 50002X        | Web Assy without Flaps & Brackets                | 1    |                       |
|      | <b>50081</b>  | <b>Roller Assembly Consists Of:</b>              |      |                       |
| 102  | 50080         | Roller Mounting                                  | 1    |                       |
| 103  | 0000300202    | Dust Cover                                       | 1    |                       |
| 104  | 50040         | Flanged Steel Roller                             | 1    |                       |
| 105  | 6006RS        | Bearing  | 2    |                       |
| 106  | RH56          | External Circlip                                 | 2    |                       |
| 107  | GS412         | 1/8"BSP Grease Nipple                            | 1    |                       |
| 108  | 50066         | Roller Scraper                                   | 1    |                       |
|      | <b>33288</b>  | <b>6 Spline PTO Shaft (c/w LH drive clutch)</b>  |      |                       |
|      | <b>33289</b>  | <b>6 Spline PTO Shaft (c/w RH drive clutch)</b>  |      |                       |
|      | <b>33290</b>  | <b>21 Spline PTO Shaft (c/w LH drive clutch)</b> |      |                       |
|      | <b>33291</b>  | <b>21 Spline PTO Shaft (c/w RH drive clutch)</b> |      |                       |
|      |               | <b>Consist Of:</b>                               |      |                       |
| 109  | 11557/5       | 6 Spline Yoke                                    | 1    | Assy 33288&33289 only |
|      | 33094/1       | 21 Spline Yoke                                   | 1    | Assy 33290&33291 only |
| 110  | 11557/7       | Unit package                                     | 2    |                       |
| 111  | 11557/9       | Male End Inner Yoke                              | 1    |                       |
| 112  | 11557/10      | Female End Inner Yoke                            | 1    |                       |
| 113  | 11557/11      | Spring Pin                                       | 2    |                       |
| 114  | 33168/1       | Male Lemon Tube                                  | 1    |                       |
| 115  | 33169/1       | Female Lemon Tube                                | 1    |                       |
| 116  | 33170/3       | 6 Spline LH Drive Over-run Clutch                | 1    | Assy 33288&33290 only |
|      | 33171/3       | 6 Spline RH Drive Over-run Clutch                | 1    | Assy 33289&33291 only |
| 117  | 33221         | PTO Shaft (less outboard couplings)              | 1    |                       |
| 118  | 33221A        | Male Coupling Complete                           | 1    |                       |
| 119  | 33221B        | Female Coupling Complete                         | 1    |                       |
| 120  | 33221/1       | Guard Complete                                   | 1    |                       |
| 121  |               |  |      |                       |
|      | <b>50098</b>  | <b>Roller Assembly Consists Of:</b>              |      |                       |
| 122  | 50099         | Roller Spindle                                   | 1    |                       |
| 123  | RPC620.303070 | End Cap  | 1    |                       |
| 124  | RPC700.300148 | Roller c/w Bearing                               | 1    |                       |
| 125  | RPGM070.00446 | Felt Ring  | 1    |                       |
| 126  | RPGM089.00565 | Roller Shield                                    | 1    |                       |
| 127  | 22046012C     | M12 Flat Washer (2.5mm thick)                    | 1    |                       |

Machines from Serial No FT2500

**Depth Wheel/Depth Disc Assemblies**



Machines from Serial No FT2500

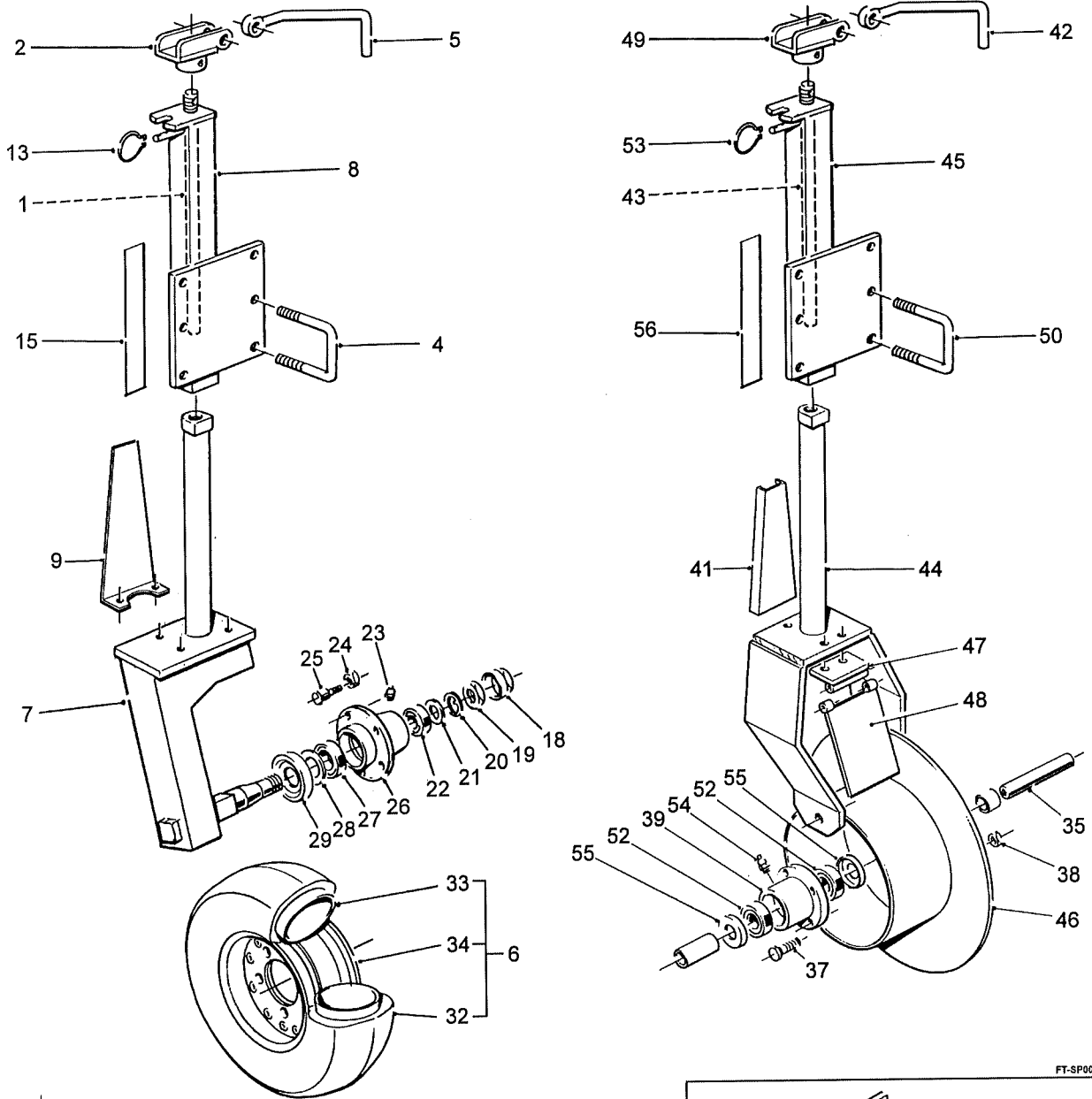
## Depth Wheel/Depth Disc Assemblies

| Item | Part No.     | Description                                | Qty. | Remarks           |
|------|--------------|--|------|-------------------|
|      |              | <b>Depth Wheel Assemblies Consists Of:</b> |      |                   |
| 1    | 33124        | Axle Stud                                  | 2    |                   |
| 2    | 33167        | Wheel Complete                             | 2    | (see list at end) |
| 3    | 33222        | Height Indicator                           | 2    |                   |
| 4    | 50039        | Depth Handle                               | 2    |                   |
| 5    | 33279        | Adjuster Screw                             | 2    |                   |
| 6    | 33280        | Depth Wheel Leg                            | 2    |                   |
| 7    | 50016        | LH Depth Wheel Mounting                    | 1    |                   |
|      | 50017        | RH Depth Wheel Mounting                    | 1    | (not shown)       |
| 8    | 47164        | Pivot Bracket                              | 2    |                   |
| 9    | 50018        | M12 U Bolt (80mm SHS)                      | 4    |                   |
| 10   |              |  |      |                   |
| 11   | TR267        | Transfer                                   | 2    |                   |
| 12   |              |  |      |                   |
| 13   |              |  |      |                   |
| 14   |              |  |      |                   |
|      | <b>33167</b> | <b>Wheel Complete Consists Of:</b>         |      |                   |
| 15   | 33117        | 6.00x9-6Ply Tyre                           | 1    |                   |
| 16   | 33118        | Tube                                       | 1    |                   |
| 17   | 33119        | Wheel Rim                                  | 1    |                   |
| 18   | 33120        | Axle Tube                                  | 1    |                   |
| 19   | 33121        | Spacer Tube                                | 1    |                   |
| 20   | 33122        | Spacer                                     | 2    |                   |
| 21   | 33123        | Seal                                       | 2    |                   |
| 22   |              |  |      |                   |
| 23   | 6205         | Bearing                                    | 2    |                   |
|      |              |  |      |                   |
|      |              | <b>Depth Disc Assemblies Consists Of:</b>  |      |                   |
| 24   | 33336        | Axle Shaft                                 | 2    |                   |
| 25   |              |  |      |                   |
| 26   | 17201        | Stud                                       | 8    |                   |
| 27   | 17202        | Nut  | 8    |                   |
| 28   | 17214        | Hub  | 2    |                   |
| 29   |              |  |      |                   |
| 30   | 33222        | Height Indicator                           | 2    |                   |
| 31   | 50039        | Depth Handle                               | 2    |                   |
| 32   | 33279        | Adjuster Screw                             | 2    |                   |
| 33   | 33280        | Depth Wheel Leg                            | 2    |                   |
| 34   | 50016        | LH Depth Wheel Mounting                    | 1    |                   |
|      | 50017        | RH Depth Wheel Mounting                    | 1    | (not shown)       |
| 35   | 33282        | Depth Disc                                 | 2    |                   |
| 36   | 33283        | Scraper Mounting                           | 2    |                   |
| 37   | 33284        | Scraper                                    | 2    |                   |
| 38   | 47164        | Pivot Bracket                              | 2    |                   |
| 39   | 50018        | M12 U Bolt (80mm SHS)                      | 4    |                   |
| 40   |              |  |      |                   |
| 41   | 6005RS       | Bearing                                    | 4    |                   |
| 42   |              |  |      |                   |
| 43   | GS412        | Grease Nipple                              | 2    |                   |
| 44   | PH408        | Seal                                       | 4    |                   |
| 45   | TR267        | Transfer                                   | 2    |                   |

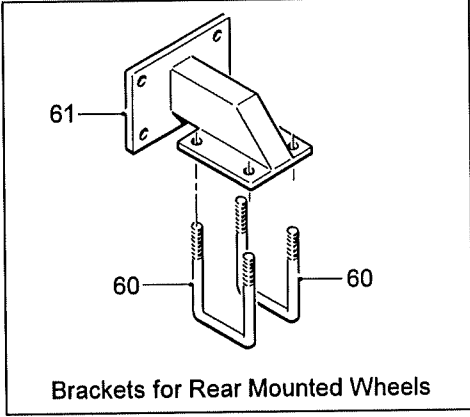


Machines from Serial No FT2 528

**Depth Wheel/Depth Disc Assemblies**



FT-SP005



**Brackets for Rear Mounted Wheels**

## 2.2a

## SPARE PARTS

Machines from Serial No FT2 528

## Depth Wheel/Depth Disc Assemblies

| Item | Part No.     | Description                                | Qty. | Remarks           |
|------|--------------|--|------|-------------------|
|      |              | <b>Depth Wheel Assemblies Consists Of:</b> |      |                   |
| 1    | 33279        | Adjuster Screw                             | 2    |                   |
| 2    | 47164        | Pivot Bracket                              | 2    |                   |
| 3    |              |  |      |                   |
| 4    | 50018        | M12 U Bolt (80mm SHS)                      | 4    |                   |
| 5    | 50083        | LH Depth Handle                            | 1    |                   |
|      | 50039        | RH Depth Handle (not shown)                | 1    |                   |
| 6    | 50071        | Wheel Complete                             | 2    | (see list at end) |
| 7    | 50072        | LH Depth Wheel Leg                         | 1    |                   |
|      | 50073        | RH Depth Wheel Leg                         | 1    | (not shown)       |
| 8    | 50074        | LH Depth Wheel Mounting                    | 1    |                   |
|      | 50075        | RH Depth Wheel Mounting                    | 1    | (not shown)       |
| 9    | 50082        | Height Indicator                           | 2    |                   |
| 10   |              |  |      |                   |
| 11   |              |  |      |                   |
| 12   |              |  |      |                   |
| 13   | DW60495      | Spring Clip                                | 2    |                   |
| 14   |              |  |      |                   |
| 15   | TR267        | Transfer                                   | 2    |                   |
| 16   |              |  |      |                   |
| 17   |              |  |      |                   |
| 18   | 50072X/1     | End Cap                                    | 2    |                   |
| 19   | 50072X/2     | Castellated Nut                            | 2    |                   |
| 20   | 50072X/3     | Locking Washer                             | 2    |                   |
| 21   | 50072X/4     | Spacer                                     | 2    |                   |
| 22   | 50072X/5     | Bearing                                    | 2    |                   |
| 23   | 50072X/6     | Grease Nipple                              | 2    |                   |
| 24   | 50072X/7     | Wheel Nut                                  | 10   |                   |
| 25   | 50072X/8     | Wheel Stud                                 | 10   |                   |
| 26   | 50072X/9     | Hub  | 2    |                   |
| 27   | 50072X/10    | Bearing                                    | 2    |                   |
| 28   | 50072X/11    | Seal                                       | 2    |                   |
| 29   | 50072X/12    | Shroud                                     | 2    |                   |
| 30   |              |  |      |                   |
| 31   |              |  |      |                   |
|      | <b>50071</b> | <b>Wheel Complete Consists Of:</b>         |      |                   |
| 32   | 33117        | 6.00x9-6Ply Tyre                           | 1    |                   |
| 33   | 33118        | Tube                                       | 1    |                   |
| 34   | 50077        | Wheel Rim                                  | 1    |                   |
|      |              |  |      |                   |
|      |              | <b>Depth Disc Assemblies Consists Of:</b>  |      |                   |
| 35   | 33336        | Axle Shaft                                 | 2    |                   |
| 36   |              |  |      |                   |
| 37   | 17201        | Stud                                       | 8    |                   |
| 38   | 17202        | Nut  | 8    |                   |
| 39   | 17214        | Hub  | 2    |                   |
| 40   |              |  |      |                   |
| 41   | 33222        | Height Indicator                           | 2    |                   |
| 42   | 50083        | LH Depth Handle                            | 1    |                   |
|      | 50039        | RH Depth Handle (not shown)                | 1    |                   |
| 43   | 33279        | Adjuster Screw                             | 2    |                   |
| 44   | 33280        | Depth Wheel Leg                            | 2    |                   |

# SPARE PARTS

2.2b

Machines from Serial No FT2 528

## Depth Wheel/Depth Disc Assemblies

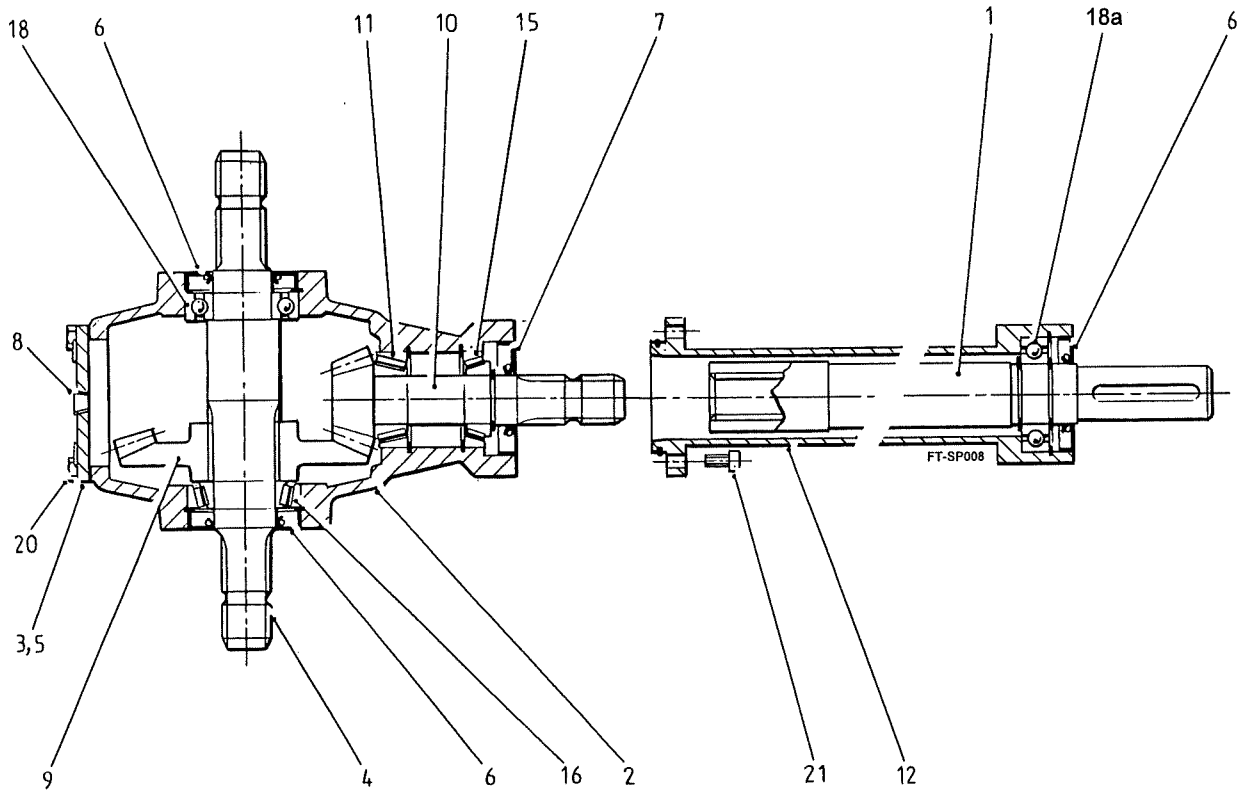
| Item                                    | Part No. | Description             | Qty. | Remarks     |  |
|---|----------|-------------------------|------|-------------|--|
| 45                                      | 50074    | LH Depth Wheel Mounting | 1    | (not shown) |  |
|   | 50075    | RH Depth Wheel Mounting | 1    |             |  |
| 46                                      | 33282    | Depth Disc              | 2    |             |  |
| 47                                      | 33283    | Scraper Mounting        | 2    |             |  |
| 48                                      | 33284    | Scraper                 | 2    |             |  |
| 49                                      | 47164    | Pivot Bracket           | 2    |             |  |
| 50                                      | 50018    | M12 U Bolt (80mm SHS)   | 4    |             |  |
| 51                                      |          |                         |      |             |  |
| 52                                      | 6005RS   | Bearing                 | 4    |             |  |
| 53                                      | DW60495  | Spring Clip             | 2    |             |  |
| 54                                      | GS412    | Grease Nipple           | 2    |             |  |
| 55                                      | PH408    | Seal                    | 4    |             |  |
| 56                                      | TR267    | Transfer                | 2    |             |  |
| <hr/>                                   |          |                         |      |             |  |
| <b>Brackets for Rear Mounted Wheels</b> |          |                         |      |             |  |
| <b>Consist Of:</b>                      |          |                         |      |             |  |
| 60                                      | 50019    | 'U' Bolt                | 4    |             |  |
| 61                                      | 50085    | Mounting Bracket        | 2    |             |  |



Machines from Serial No FT2 500

**Gearbox Assembly**

Assy No 33164



## 2.3a

## SPARE PARTS

Machines from Serial No FT2 500

## Gearbox Assembly

Assy No 33164

| Item | Part No.   | Description                   | Qty. | Remarks       |
|------|------------|-------------------------------|------|---------------|
| 1    | 33164/1    | Output Shaft (Ø40 ID bearing) | 1    | Prior to 2014 |
|      | 33164/1A   | Output Shaft (Ø45 ID bearing) | 1    | From 2014     |
| 2    | 33164/2    | Gearbox Casing                | 1    |               |
| 3    | 33164/3    | End Plate                     | 1    |               |
| 4    | 33164/4    | Input Shaft                   | 1    |               |
| 5    | 33164/5    | Gasket                        | 1    |               |
| 6    | 33164/6    | Oil Seal (45x85x10)           | 3    |               |
| 7    | 42046/10   | Oil seal (35x80x10)           | 1    | Was 33164/7   |
| 8    | 33164/8    | Filler Plug                   | 3    |               |
| 9    | 33164/9    | Input Gear                    | 1    |               |
| 10   | 33164/10   | Output Gear and Shaft         | 1    |               |
| 11   | 33164/11   | Bearing (32207)               | 1    |               |
| 12   | 33164/12   | Output Shaft Housing          | 1    | Prior to 2014 |
|      | 33164/12A  | Output Shaft Housing          | 1    | From 2014     |
| 13   |            |                               |      |               |
| 14   |            |                               |      |               |
| 15   | TH00500305 | Bearing (30207)               | 1    |               |
| 16   | TH00500307 | Bearing (30209)               | 1    |               |
| 17   |            |                               |      |               |
| 18   | 6209       | Bearing                       | 1    |               |
| 18a  | 6308       | Bearing (Ø40 ID)              | 1    | Prior to 2014 |
|      | 6209       | Bearing (Ø45 ID)              | 1    | From 2014     |
| 19   |            |                               |      |               |
| 20   |            | M8x20 Hex Head Setscrew       | 8    |               |
| 21   |            | M10x30 Capscrew               | 4    |               |

# STANDEN ENGINEERING LTD

## FLAIL TOPPER Mk2 SPEEDS

1100 rpm Rotor Speed is Standard

### STANDARD SPEEDS

| PTO Speed | Rotor Speed | Top Pulley | Bottom Pulley | Belt Length |
|-----------|-------------|------------|---------------|-------------|
| 400       | 1086        | 315        | 224           | 2000        |
| 540       | 1104        | 250        | 236           | 2000        |
| 740       | 1133        | 250        | 315           | 2120        |
| 800       | 1103        | 200        | 280           | 1975        |
| 945       | 1151        | 224        | 355           | 2150        |
| 1000      | 1087        | 200        | 355           | 2120        |

### PULLEYS:

| <u>Pulley Size:</u> | <u>Part No.:</u> |
|---------------------|------------------|
| 180 (2517)          | 33069            |
| 190 (2517)          | 33158            |
| 200 (3020)          | 33041            |
| 224 (3020)          | 42094            |
| 236 (3020)          | 33335            |
| 250 (3020)          | 33068            |
| 280 (3020)          | 27835/1          |
| 315 (3525)          | 33159            |
| 355 (3525)          | 50027            |

### SPECIAL SPEEDS

| PTO Speed | Rotor Speed | Top Pulley | Bottom Pulley | Belt Length |
|-----------|-------------|------------|---------------|-------------|
| 540       | 1313        | 315        | 250           | 2120        |
| 600       | 1227        | 250        | 236           | 2000        |
| 600       | 1459        | 315        | 250           | 2120        |
| 650       | 1329        | 250        | 236           | 2000        |
| 670       | 1221        | 236        | 250           | 2000        |
| 670       | 1370        | 250        | 236           | 2000        |

### BUSHES:

| <u>Bush Size:</u> | <u>Part No.:</u> |
|-------------------|------------------|
| 2517/40           | 33082            |
| 3020/40           | S88-75-509       |
| 3525/40           | 33155            |
| 2517/45           | 33154            |
| 3020/45           | 33042            |
| 3525/45           | 33156            |

### BELTS:

| <u>Belt Length:</u> | <u>Part No.:</u> |
|---------------------|------------------|
| 1800                | VB77             |
| 1900                | VB78             |
| 1975                | VB88             |
| 2000                | VB82             |
| 2120                | VB85             |
| 2150                | VB89             |